



GOBIERNO  
DE ESPAÑA

MINISTERIO  
PARA LA TRANSICIÓN ECOLÓGICA  
Y EL RETO DEMOGRÁFICO

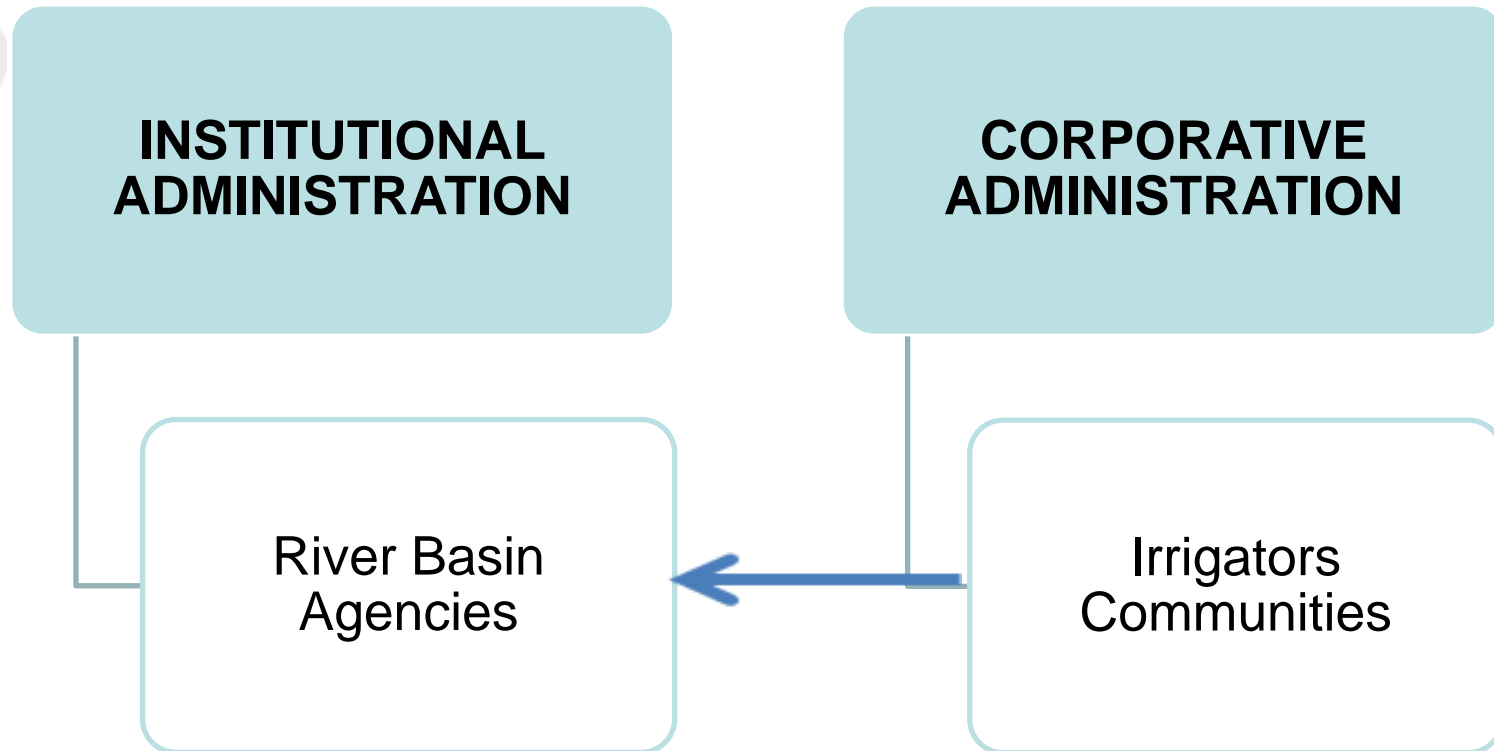
CONFEDERACIÓN  
HIDROGRÁFICA DEL  
GUADALQUIVIR, O.A.

# Governance framework in the Spanish basin Agencies



## ORGANIZATION

---





## HISTORICAL BACKGROUND

---

-MILLENNIALS CORPORATIONS DATED BACK TO **ROMAN AND ARABIC LAW.**

-WATER DISTRIBUTION BASED ON **CUSTOMARY LAW** FEEDED BY HABITS AND PRACTICES VERBALLY PASSED GENERATION TO GENERATION.

-**ROOTED IN POPULAR CONSCIOUSNESS** DUE TO PHYSICAL ENVIRONMENT MORE THAN ANY HUMAN PHENOMENA (DRAUGHT, WATER AS A LIMITED RESOURCE, OROGRAPHY, CLIMATE, SCARCITY OF RESOURCES, ETC.).

-**WATER LAW OF JUNE 1879:** FIRST IRRIGATIONS COMMUNITIES INCORPORATION TO SPANISH LAW.



# IRRIGATORS COMMUNITIES DEFINITION

---

ASSOCIATION OF LANDOWNERS OF IRRIGATION AREAS WHICH BENEFIT FROM A SURFACE OR UNDERGROUND WATER CONCESSION DEFINED BY GOVERNMENT, WHO UNITE FOR THE AUTONOMOUS AND COMMON ADMINISTRATION OF THE PUBLIC WATERS

- As the Spanish water law rules:

“THE USERS OF THE WATER AND OTHER PUBLIC WATER GOODS OF A SAME OUTLET OR CONCESSION SHOULD GATHER IN A USERS COMMUNITY”



# FEATURES

---

- MIXED PUBLIC AND PRIVATE ASSOCIATIONS.
- ADSCRIBED TO THE RIVER BASIN AUTHORITY.
- HOLDERS OF AN ADMINISTRATIVE CONCESSION THAT DETERMINES THE AMOUNT OF WATER AND A SPECIFIC AREA FOR IRRIGATION AND THAT ALLOWS ALL MEMBERS TO SHARE WATER COLLECTIVELY.
- AUTONOMOUS OR SELF-ADMINISTRATION OF COMMON OR PUBLIC WATERS.
- WATER CAN NOT BE USED OUT OF THE IRRIGATOR COMMUNITY AREA.
- FARMERS KEEP THE LAND OWNERSHIP.
- WATER ATTACHED TO LAND AND NOT TO THE LANDOWNERS.THEREFOR, WHEN THAT LAND IS SOLD THE RIGHT TO THE WATER IS ALSO SOLD.
- GOVERNED BY STATUTES OR ORDINANCES THEY GIVE TO THEMSELVES AND MUST BE SUBMITTED FOR ADMINISTRATIVE APPROVAL TO THE RIVER BASIN AUTHORITY.



## PUBLIC CAPABILITIES

---

- POLICE**: Setting turns, keeping irrigate security and preserving common works and ditches.
- SANCTIONING** by imposing fines to the users that break statutes or law or even cut the water or energy supply.
- PROMOTION** of new works, flow meters, needed technology for the better and efficient use of water and energy, asking for public grants, authorising water user improvement works, etc.
- TAXES AND PRIVATE COSTS COLLECTION** even into an executive way.



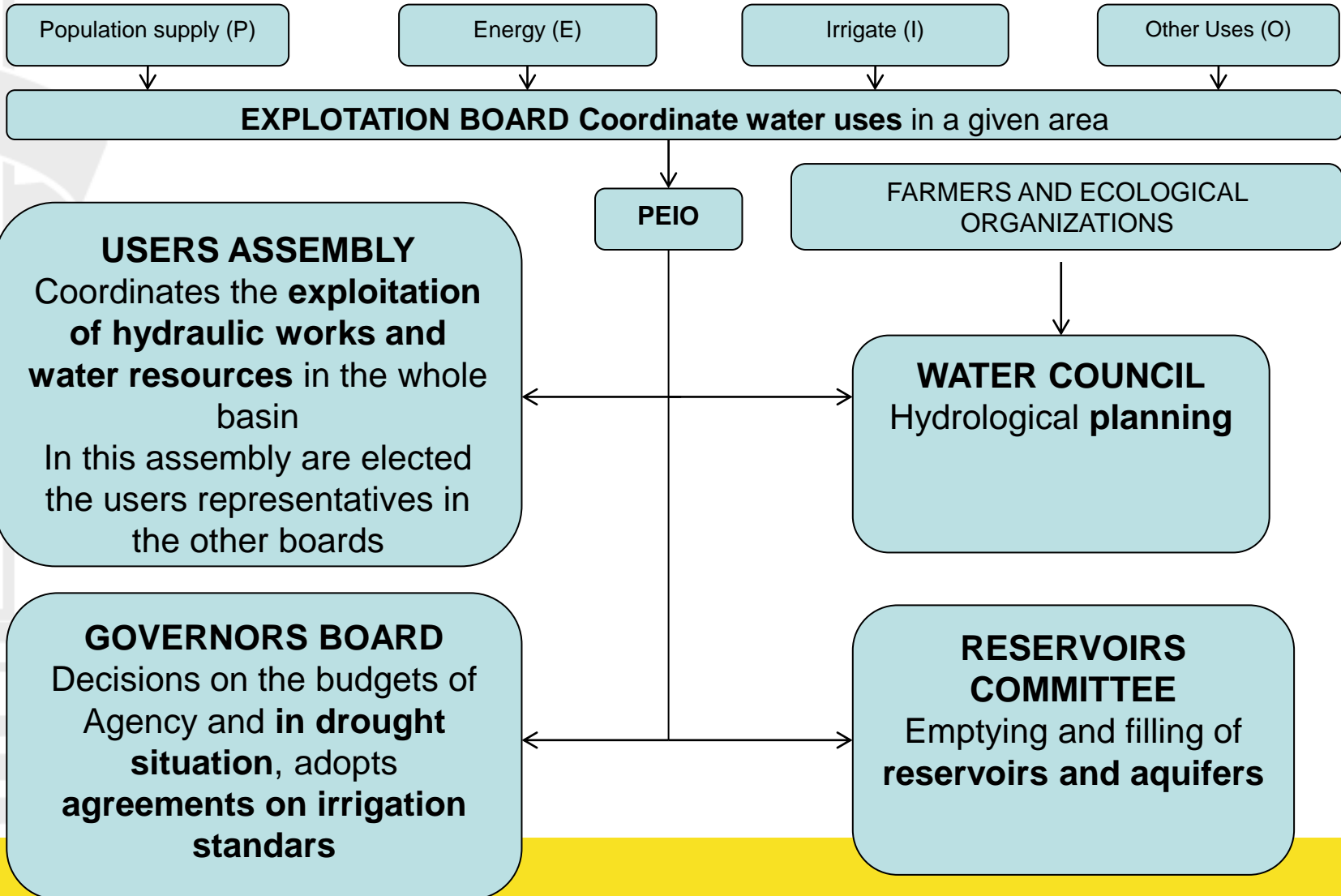
# INTERNAL PARTICIPATION IN IRRIGATORS COMMUNITIES BOARDS

---

**BOARD OF  
GOVERNORS**



# EXTERNAL PARTICIPATION IN RIVER BASIN BOARDS







THANKS