

STATE WATER SAFETY AND SECURITY PROGRAM



NATURE-BASED SOLUTIONS FOR A BLUE METROPOLIS



SOCIAL



HUMAN HEALTH AND FOOD SECURITY



ECONOMIC



SUSTAINABLE GROWTH GREEN JOBS



ENVIRONMENTAL



ECOSYSTEM PROTECTION AND RECOVERY

NATURE-BASED SOLUTIONS FOR A BLUE METROPOLIS

WHY IS THE MATA ATLÂNTICA RAIN FOREST IMPORTANT FOR WATER?



- **PRESERVE WATER CYCLE**
- **CAPTURE GREENHOUSE GASES**
- **MAINTAIN LOCAL TEMPERATURES,**
- **DECREASE EVAPORATION**

NATURE-BASED SOLUTIONS FOR A BLUE METROPOLIS

WHY IS THE MATA ATLÂNTICA RAIN FOREST IMPORTANT FOR WATER?

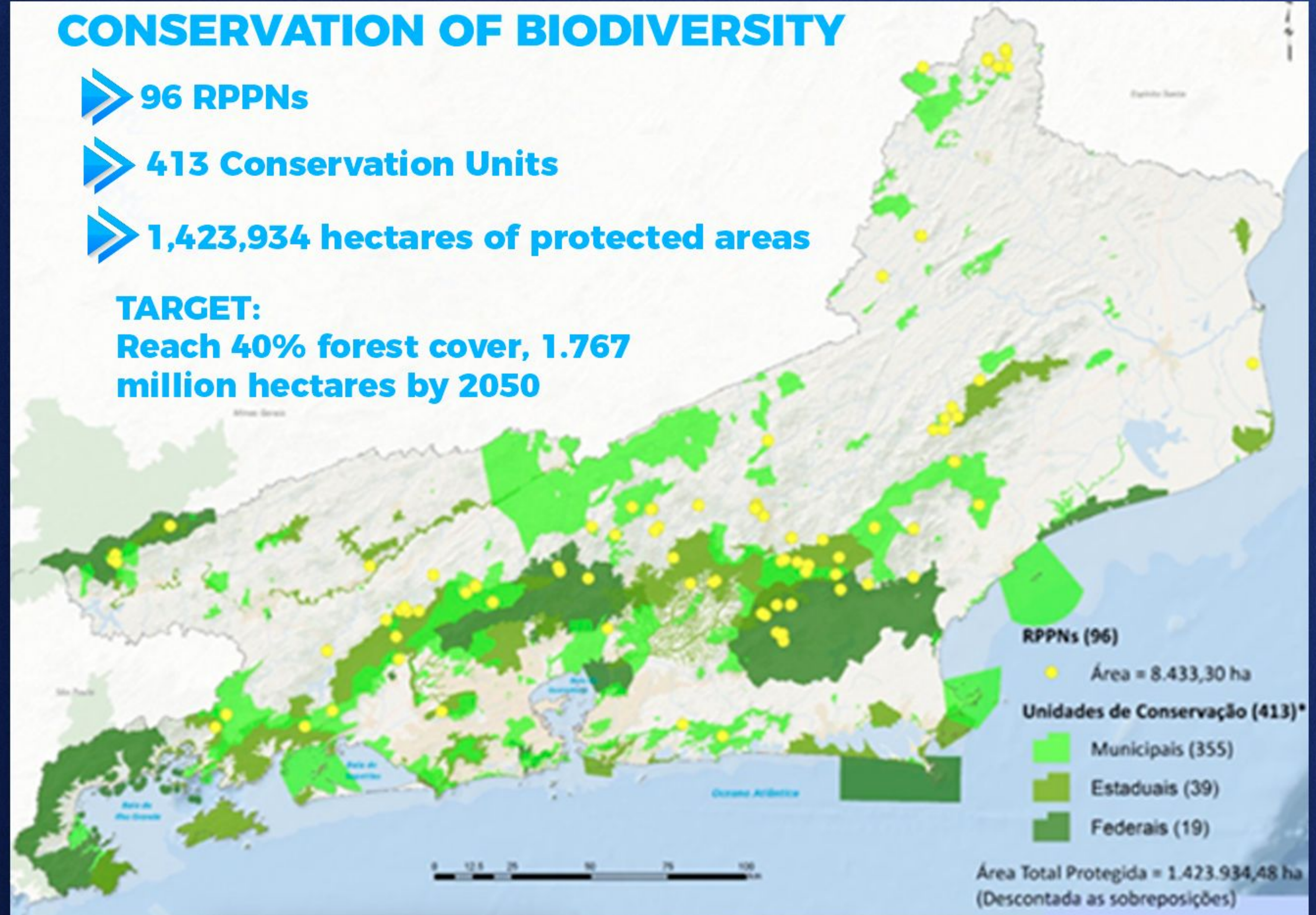


- **PROTECT HEADWATERS FOR THE PRESERVATION OF SPRINGS TO GUARANTEE HUMAN WATER SUPPLY**
- **GROUNDWATER RECHARGE**
- **PROTECT RIVERS FROM SILTING AND FLOODING**

CONSERVATION OF BIODIVERSITY

- 96 RPPNs
- 413 Conservation Units
- 1,423,934 hectares of protected areas

TARGET:
Reach 40% forest cover, 1.767 million hectares by 2050



#CONSERVE

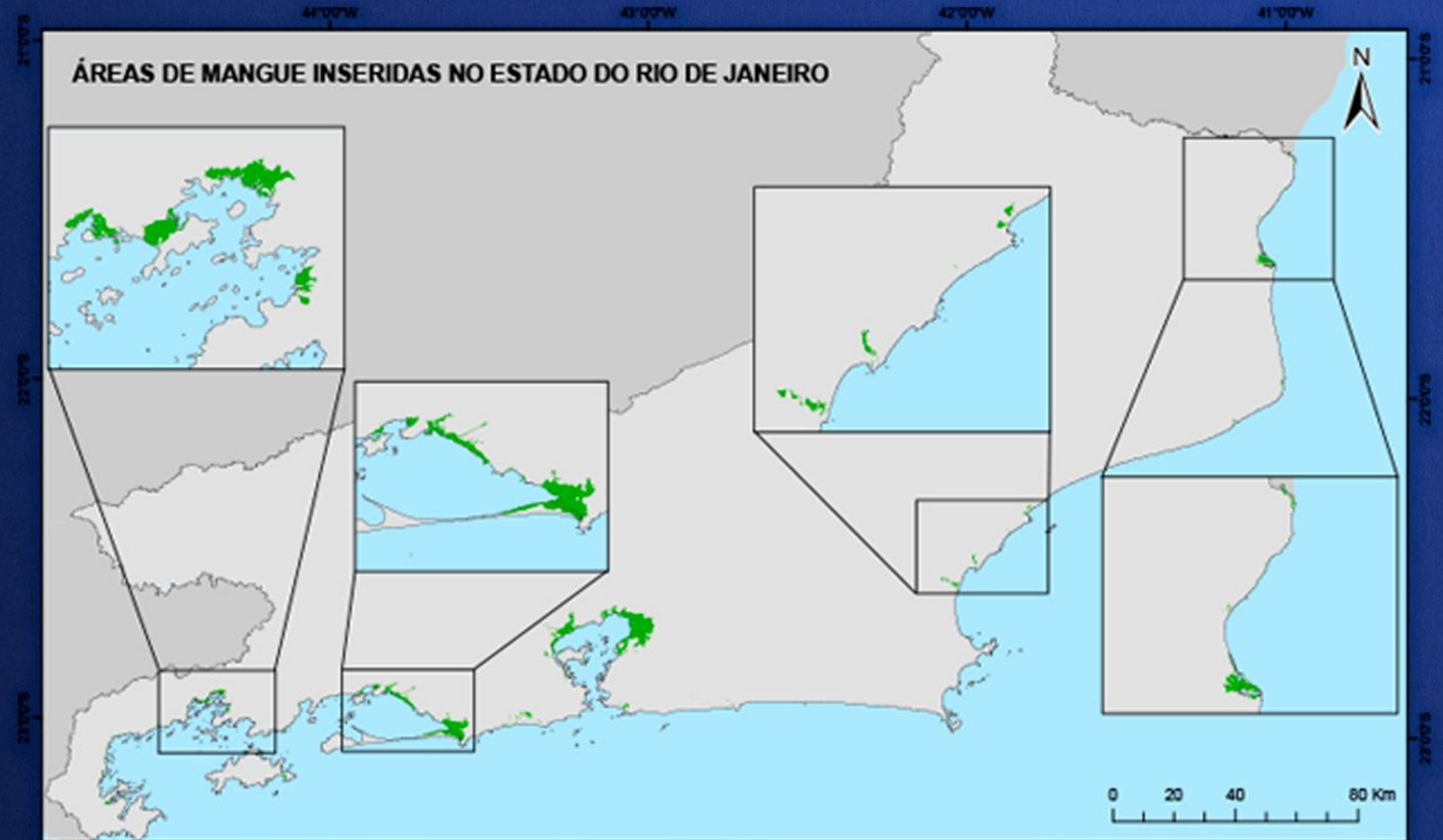
TOMORROW'S FORESTS

ACHIEVING GOALS

- **USD 120 MILLION IN INVESTMENT IN RESTORATION OVER THE NEXT 5 YEARS**
- **MATA ATLÂNTICA RAIN FOREST FUND, CONSISTING OF A FOREST RESTORATION PORTFOLIO AND A DONATION PORTFOLIO**

Tomorrow's Forests

MANGROVE AREAS IN RIO DE JANEIRO IN HECTARES: 18635,9



Espacializado por INEA/GERGET - 1:25.000
Mapeamento Áreas de Mangue: SEAS - 1:25.000
Limites Estaduais: IBGE (2021)
Sistema de Coordenadas Geográficas SIRGAS 2000
Sistema Geodésico de Referência SIRGAS 2000

- MANGUE
- UN. DA FEDERAÇÃO
- RIO DE JANEIRO

ÁREAS DE MANGUE NO RJ EM HECTARES: 18635,9

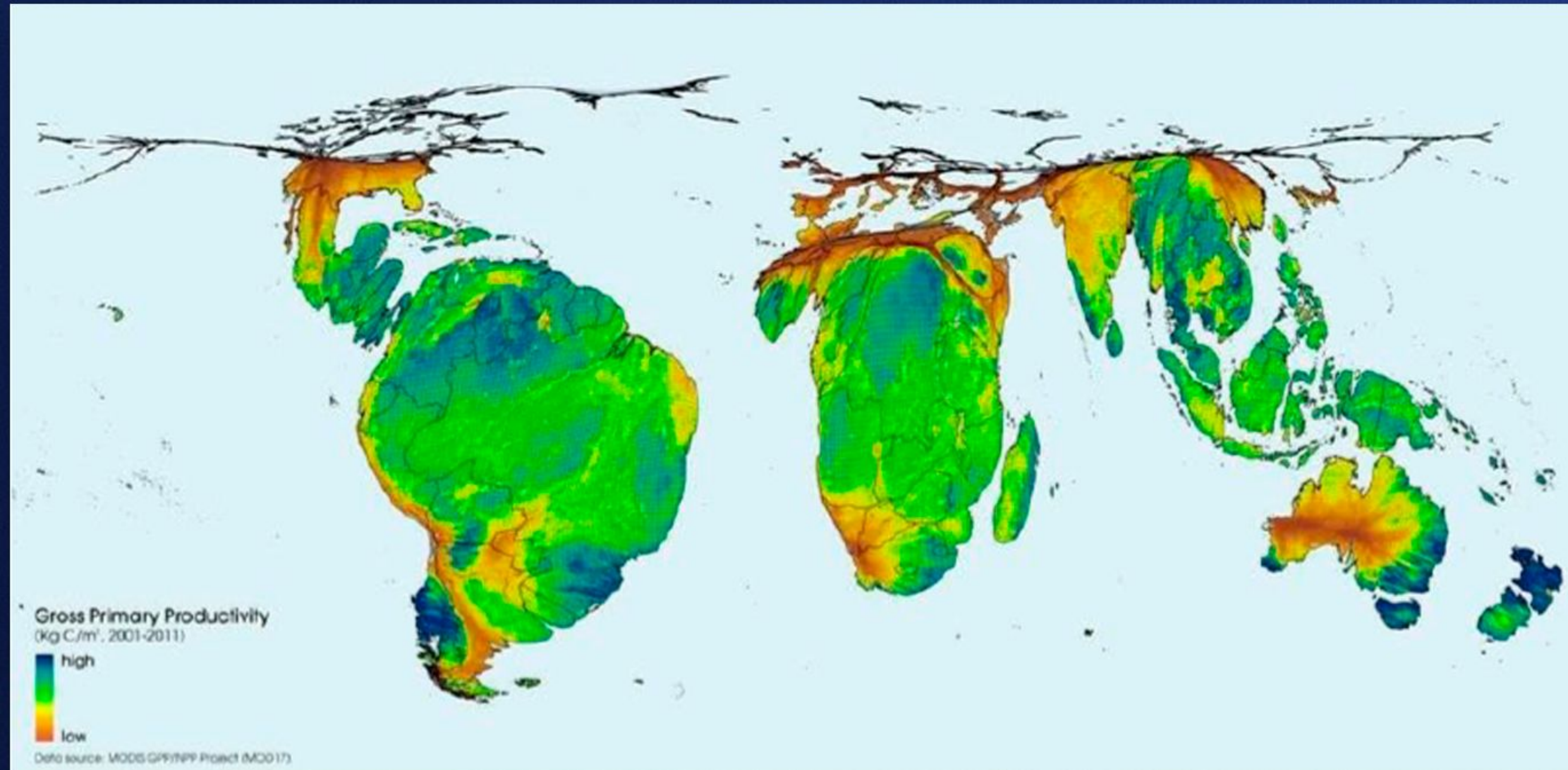
ATLANTIC FOREST CONNECTION

- ENVIRONMENTAL SERVICES PAYMENTS (PSA)
- 285 RURAL PRODUCES IN STRATEGIC AREAS
- RECOVERY AND MAINTENANCE OF NATIVE VEGETATION
- PARAIBA DO SUL RIVER BASIN

LOOKING TO THE GREEN

- **MONITORS THE ILLEGAL DEFORESTATION OF ATLANTIC FOREST REMNANT**
- **WHOLE STATE OF RIO DE JANEIRO**
- **HIGH RESOLUTION SATELLITES**

SUSTAINABLE ASSETS PLATAFORMA



TO THINK

Rio2030

É HORA DE AGIR
IT'S TIME TO ACT!



Thank you

inea instituto estadual
do ambiente

Secretaria de
Ambiente e
Sustentabilidade



GOVERNO DO ESTADO
RIO DE JANEIRO
SEM TEMPO A PERDER

Rio2030
É HORA DE AGIR