



## IWRM-Net in a nutshell

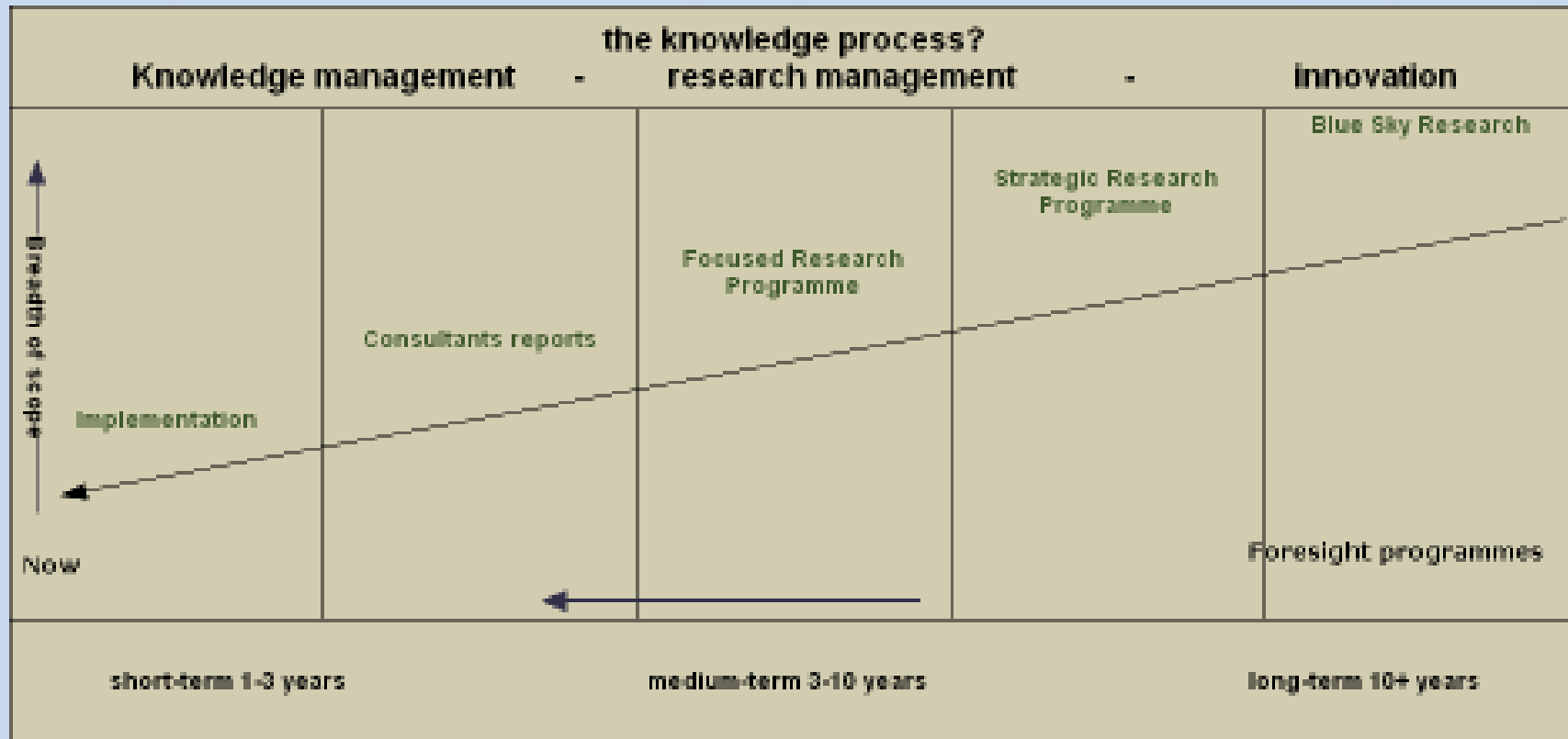
### Who are we?

Open network of research programme managers (IWRM) composed of 20 members from 14 member states

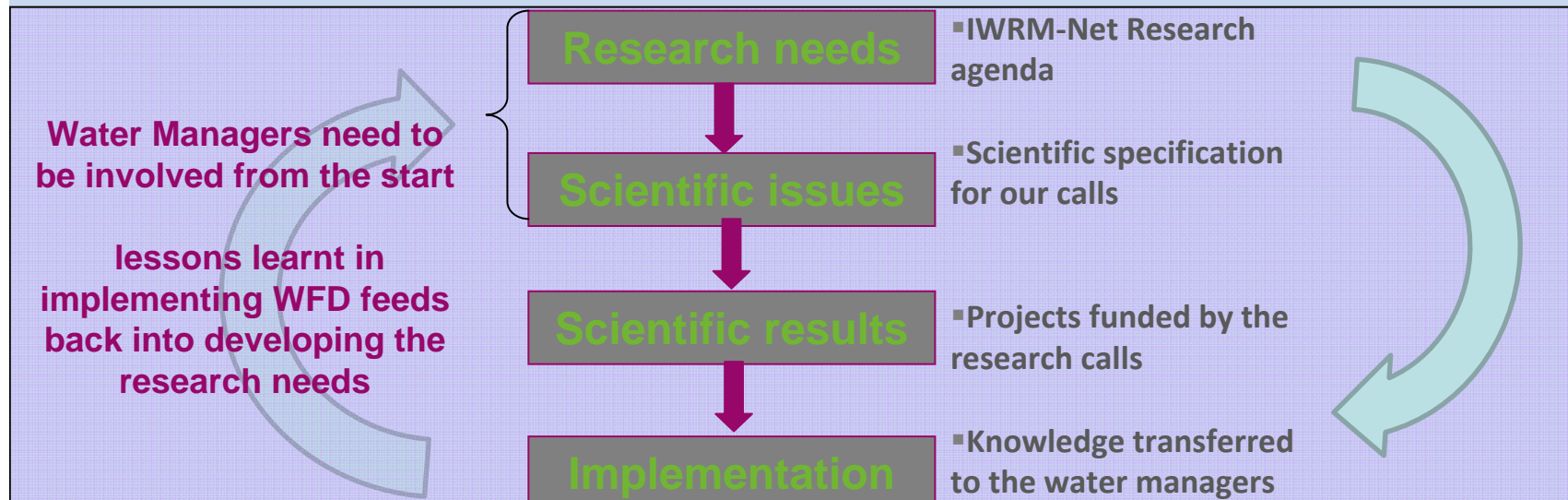
### Our aims, in the context of WFD implementation

- A forum for prospective and co-ordination of research needs and programmes
- The facilitator between research and water policy makers and managers to bridge the communication gap.





## Research Management?



IWRM-Net Capacity building

## First joint call:

- Water Governance &
- Hydromorphology
- Projects funded...

- Innovative Instruments and Institutions in Implementing the Water Framework Directive (**I-Five**)
- **FORECASTER**: Facilitating the application of Output from Research and CAse STudies on Ecological Responses to hydro-morphological degradation and rehabilitation
- **KNAC**: Knowledge in Action in the Rhine river basin hydromorphological restructuring
- Riparian vegetation modelling for the assessment of environmental flow regimes and climate change impacts within the WFD (**RIPFLOW**)





## – Second

- Climate change impacts and adaptation for IWRM
- Water Scarcity and Droughts
- Economics for IWRM: Social and Environmental Evaluation for decision making and Incentive measures to regulate uses



- Map of research programmes
- 'Map' of network and partners along with liaison strategy
- Methodological assessment for Foresight
- 2015 and beyond – Emerging issues in Water management
- Self assessment methodology for research programmes
- 'draft strategic research agenda'

- Launch event
- Mid-term conference
- Series of 6 research need identification workshops for short and long term issues
- Next meeting
  - ***Wetlands*** workshop to identify research needs Gland, Switzerland 2-3 November 2009

## MORE USER-FRIENDLY INFORMATION TOOLS

- *User Interface re-design*
- *Web Extroversion*
- *Networking and Knowledge Classification*
- **Statistics and Data Mining**



Stephen Midgley







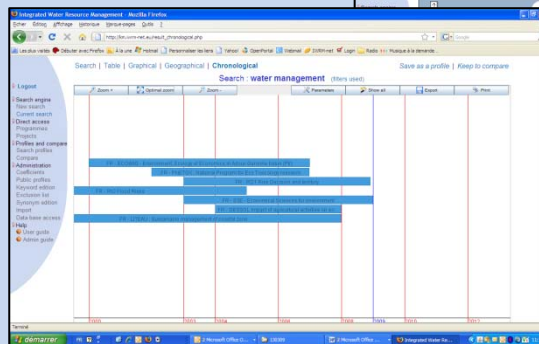
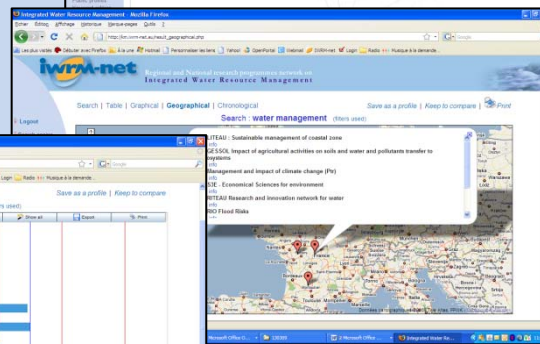
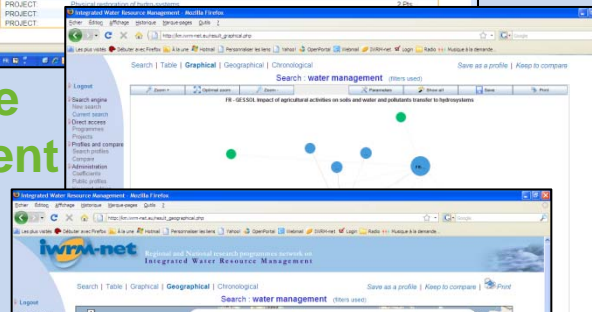
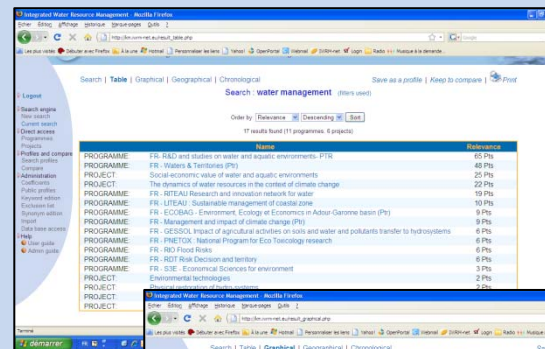
# USING 'I.T.' to make life easier - www.iwrMnet.eu/community

- WISE-RTD
- EUGRIS,
- Netwatch,

Database

Knowledge management tool

Forum



 **Strategic think tank?** on water related issues at European level with an European foresight strategy (links with SPI)

 **Continuous scientific leading?**

- Continuous scientific leading and scientific coordination for the network activity: How to create a community? How to ease the exchanges between scientific teams of funded projects?
- Promotion, dissemination, communication of scientific results: How to monitor, evaluate the projects and disseminate the scientific results?



# Networking and Interfacing

- highlighting main findings in communications to policy-makers.
- keep each other informed on relevant news,
- Developing a 'Lesson's learned from joint calls',
- Developing good practices on science policy interface (including liaison with the common implementation strategy of the WFD)



# Research Programmes

## Finland

- *Research programme on water management in agriculture and forestry*

## UK

- *Defra - Farming and Food Science Programme*
  - Agriculture and Climate Change
  - Sustainable Water Management
- *DFID - Sustainable Agriculture*

## Spain

- *National plan for scientific research, development and technological innovation (Standing Committee on Agricultural research)*
  - integrated rural development,
  - competitive production and
  - environmentally friendly practices.

## Future opportunities?

- Partners decide the next subject for the call
- Opportunities for smaller collaborations between 2-3 countries
- Agriculture and irrigation can be the next topic?



**Thank you for your attention**  
**[www.iwrM-net.eu](http://www.iwrM-net.eu)**

**Stephen Midgley, SNIFFER, Scotland**  
**[stephen@sniffer.org.uk](mailto:stephen@sniffer.org.uk)**

**Project Coordinator - Natacha Amorsi, OIEau, France**  
**[n.amorsi@oieau.fr](mailto:n.amorsi@oieau.fr)**