



IOWater – Paris
INBO Permanent
Technical Secretariat

Report to SCG, 6th November 2008 Conclusions of the 2008 EUROPE-INBO Conference on WFD implementation (1-3 October 2008, Sibiu, Romania)



International
Network
of Basin
Organizations



EUROPE-INBO



MENBO



CEENBO

CEENBO



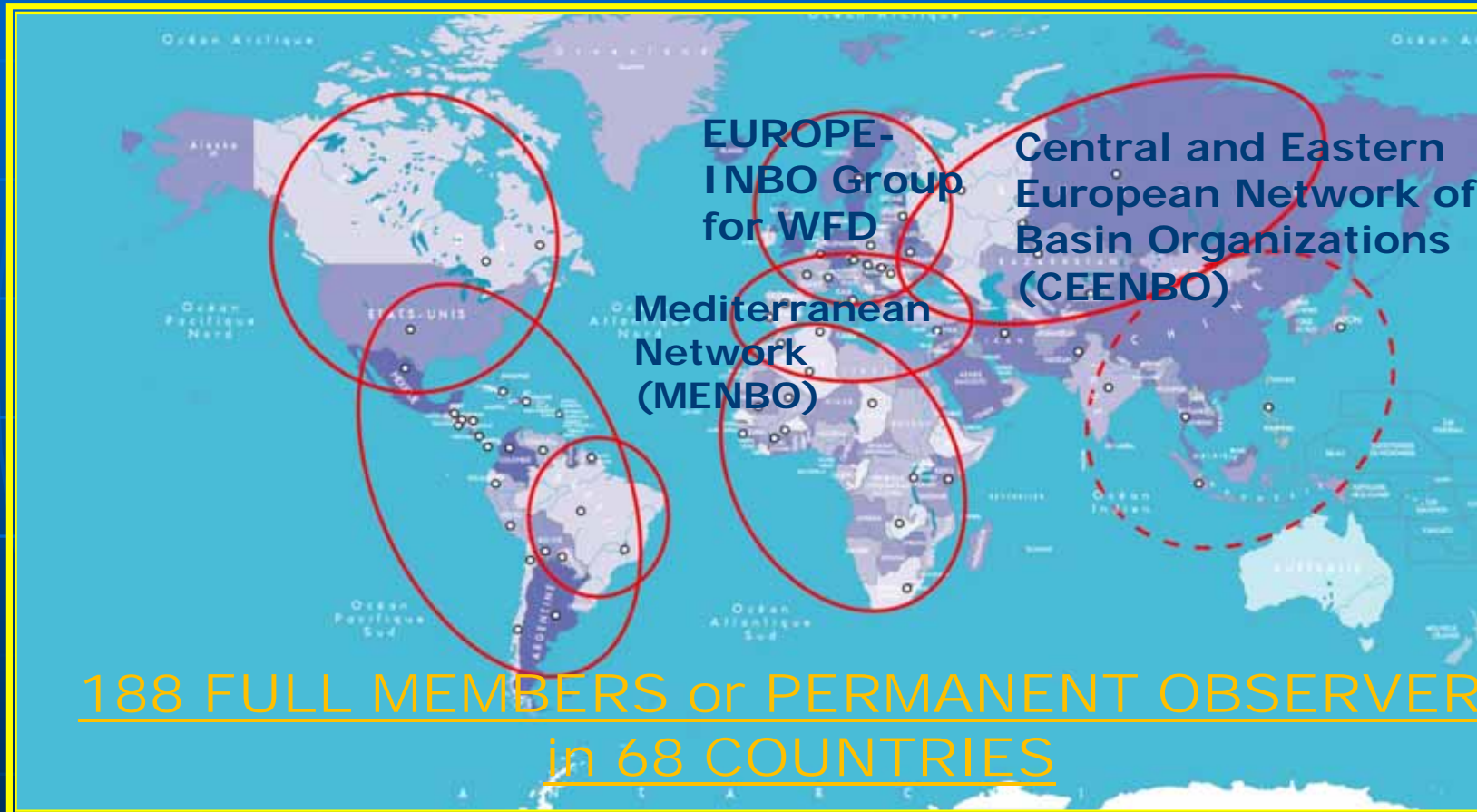
IOWater – Paris
INBO Permanent
Technical Secretariat

International Network of Basin Organizations:



International
Network
of Basin
Organizations

Created in 1994 to facilitate
operational exchanges between BO



EUROPE-INBO



MENBO



CEENBO



IOWater – Paris
INBO Permanent
Technical Secretariat

Sibiu, 195 participants, from 27 countries



International
Network
of Basin
Organizations

- ◆ Basin Organizations, national administrations, international commissions, researchers, NGO, ...
- ◆ An active participation of non-EU countries !
- ◆ 33 communications, fruitful exchanges
- ◆ **3 workshops :**
 - Elaboration of Programmes of Measures
 - Implementation of the Floods Directive
 - WFD implementation in transboundary basins



EUROPE-INBO



MENBO



CEENBO



IOWater – Paris
INBO Permanent
Technical Secretariat

Key messages



International
Network
of Basin
Organizations

- Programmes of Measures (PoM) -

- ◆ **Elaboration** : at relevant scale - **large basin + sub-basin level** & should involve **local politico-administrative stakeholders** as frontliners of future implementation
- ◆ **Operational phase of implementation** : essential role of local stakeholders !!!
- ◆ **Need for increasing mobilization of local State Services**
- ◆ **Time factor** : take into account necessary time to realize actions and obtain positive results (uncertainties about real efficiency of measures) and launch measures asap (since 2015 is tomorrow !)
- ◆ **Call for a true mobilization in agriculture**, difficult to obtain good status without a real reform of CAP
- ◆ Increase means devoted to **wetlands & hydromorphology + groundwaters**
- ◆ Promote measures for quantitative issues (water scarcity and drought)



EUROPE-INBO



MENBO



CEENBO



IOWater – Paris
INBO Permanent
Technical Secretariat

Key messages

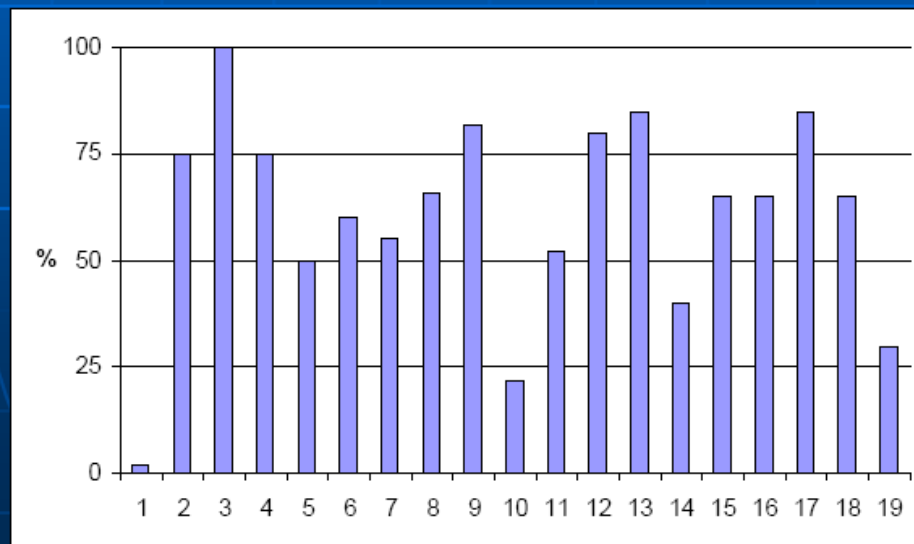
- Programmes of Measures -



International
Network
of Basin
Organizations

- ◆ **Need for realistic objectives:** Huge cost! who will pay & how much?
- ◆ A significant % of WB would not reach good status in 2015

Question : With your current level of knowledge, which % of water bodies reaching good status do you think to reach in your basin in 2015 ?



- ◆ **Financing capacities:** condition for the realization of objectives
- ◆ Need for a common approach between BO on exemptions and extensions of delays



IOWater – Paris
INBO Permanent
Technical Secretariat

Key messages

- Floods Directive -



International
Network
of Basin
Organizations

- ◆ A necessary change of mentalities : control & defence
→ **integrated prevention and risk management**
- ◆ A need for close coordination between Floods Directive and WFD but pbs because **administrations are often ≠**
- ◆ Integration must **start from the 1st RBMP** (2009) with the inclusion of elements of Floods management plans
- ◆ Invested amounts in efficient prevention □ avoided damages, but pb for **exceptional floods!** (increasing frequency)
- ◆ Need to increase **exchanges of knowledge & good practices** esp. for transboundary basins



EUROPE-INBO



MENBO



CEENBO



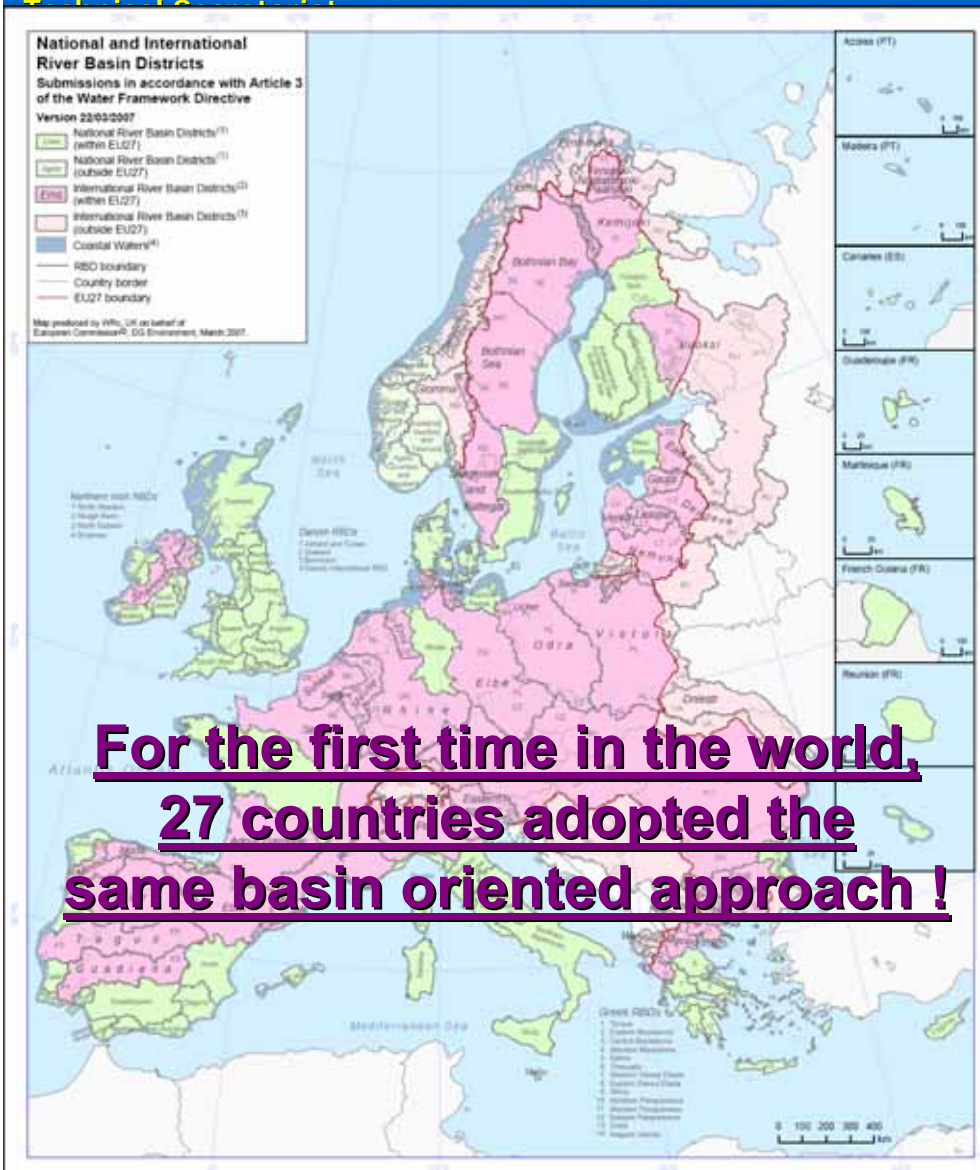
IOWater – Paris
INBO Permanent

Key messages

- WFD in transboundary basins -



International
Network
of Basin
Organizations



For the first time in the world,
27 countries adopted the
same basin oriented approach !

WFD inputs...

- ◆ Dissemination of river basin managt & IWRM **all over Europe**
- ◆ Delimitation of International RBD
- ◆ **A common planning frame**
- ◆ Positive role of **international commissions and bilateral agreements**

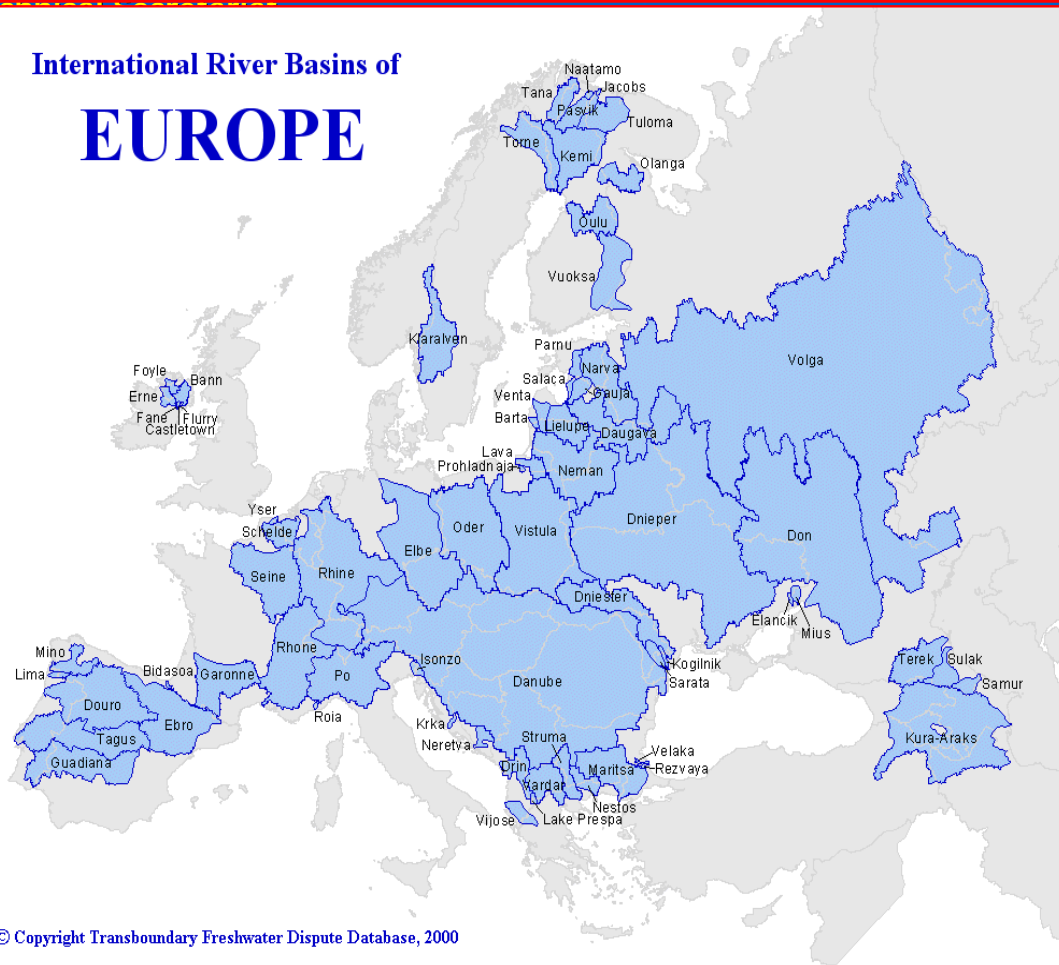


IOWater – Paris
INBO Permanent



International
Network
of Basin
Organizations

International River Basins of **EUROPE**



© Copyright Transboundary Freshwater Dispute Database, 2000

WFD inputs...

- ◆ A driving force for new EU MS and non EU countries
- ◆ A tool for **European integration**
- ◆ Usefulness of “networking” like INBO in order to take advantage from **sharing knowledge and experience**



EUROPE-INBO



MENBO



CEENBO



IOWater – Paris
INBO Permanent
Technical Secretariat

Key messages - transboundary basins



International
Network
of Basin
Organizations

... But specific constraints and needs !

- ◆ Increase **means** & **human resources** in the IRBD
- ◆ Launch joint specific professional training for the staff
- ◆ Improve **decision-making process** in international commissions
- ◆ Develop common indicators & **information systems**
- ◆ Increase **ambition of roof reports** & coordination of priorities
- ◆ Develop urgently a joint managt of **transboundary aquifers**
- ◆ Organize **true joint public consultation** on shared stakes
- ◆ Reinforce cooperation programmes with **non-EU countries**

Still huge work to improve coherence of methods & actions:
provide increased resources for WFD implementation !



EUROPE-INBO



MENBO



CEENBO



IOWater – Paris
INBO Permanent
Technical Secretariat

Other key messages



International
Network
of Basin
Organizations

- ◆ Great importance of the CIS process : INBO should invest more as the « **voice of basin organizations** »
 - ◆ B.O experts could be included in CIS Working Groups to provide **information and practical examples on good practices**
 - ◆ Water Directors meeting, 25 Nov : INBO communication on « **WFD contribution in transboundary basins** »
- ◆ Reinforce **coordination of research & science-policy interface**
- ◆ Active involvement of INBO in **5th World Water Forum**
- ◆ Positive outcomes of TWINBASIN programme and wish for an European funding support for its continuation



EUROPE-INBO



MENBO



CEENBO



IOWater – Paris
INBO Permanent
Technical Secretariat

Thank you for your attention !
More information on
www.riob.org



International
Network
of Basin
Organizations



EUROPE-INBO



MENBO

CEENBO

CEENBO