

# International Commission of the Scheldt (ICS)



**EURO-RIOB**  
**CRACOVIE 28/09/2004**  
**A.LEFEBURE Secretary General**

## The process of international cooperation on water, the case of the Scheldt

- from needs to implementation
  - Problems
  - Essential needs
  - implementation: 2 schelde treaties
- Decision making in the ISC?
  - factors
  - Work's organisation
  - Limits

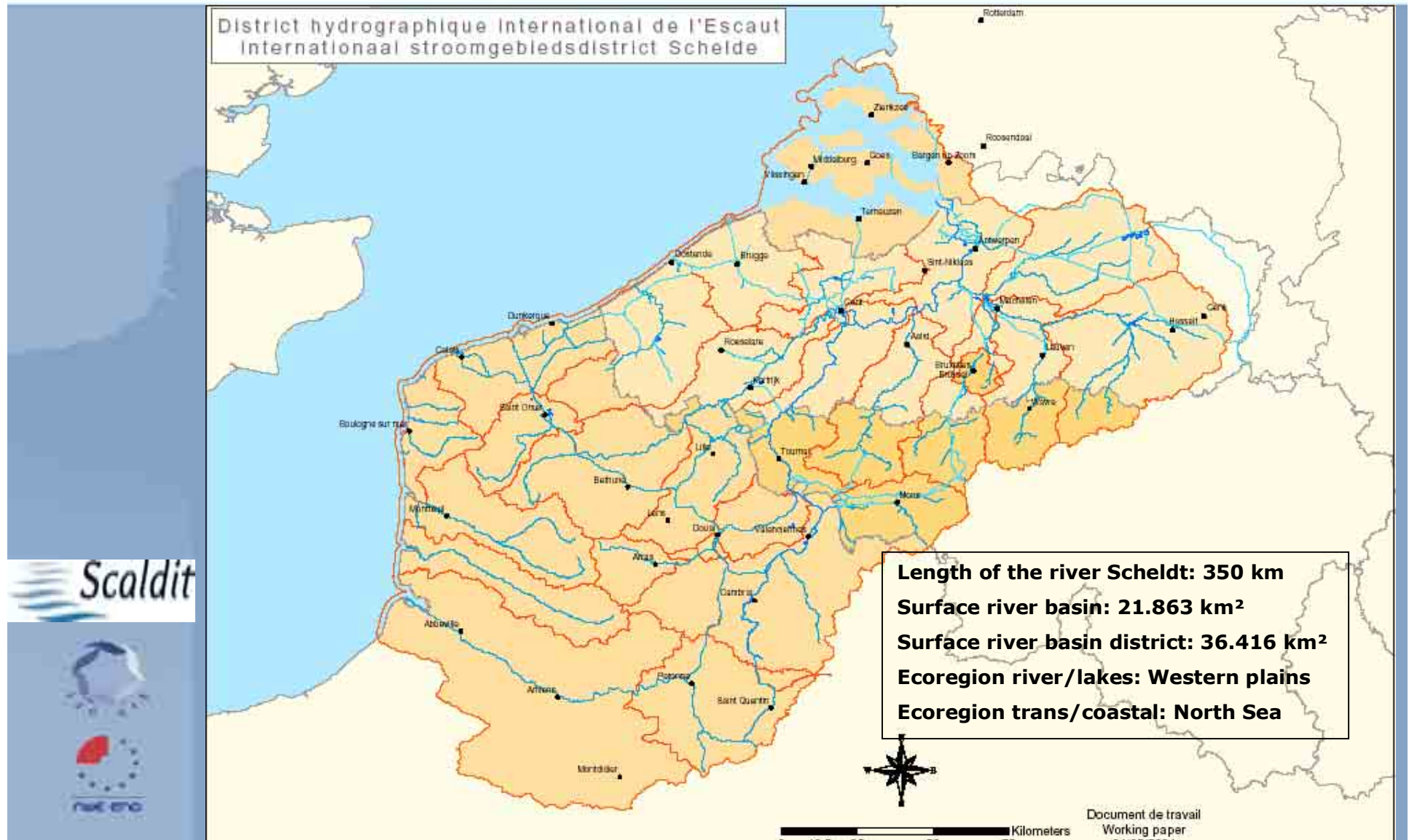
### III. A financial and organisation tool: SCALDIT?

- Project
- Risks factors & added value

 Scaldit



# Scheldt International River Basin District



# ● FROM NEEDS TO IMPLEMENTATION

## Problems: numerous!



- A long story of conflicts
- small river(350km) for a lot of people-500/km<sup>2</sup>
- Smallest water ressource per inhab. in Europe
- Many old & polluting industries
- Social differences: unemployment:5 to 32%
- The most intensive agriculture in Europe
- Historical (& unknown) ground's pollutions
- Antwerps 3rd world's harbour-huge inland traffic

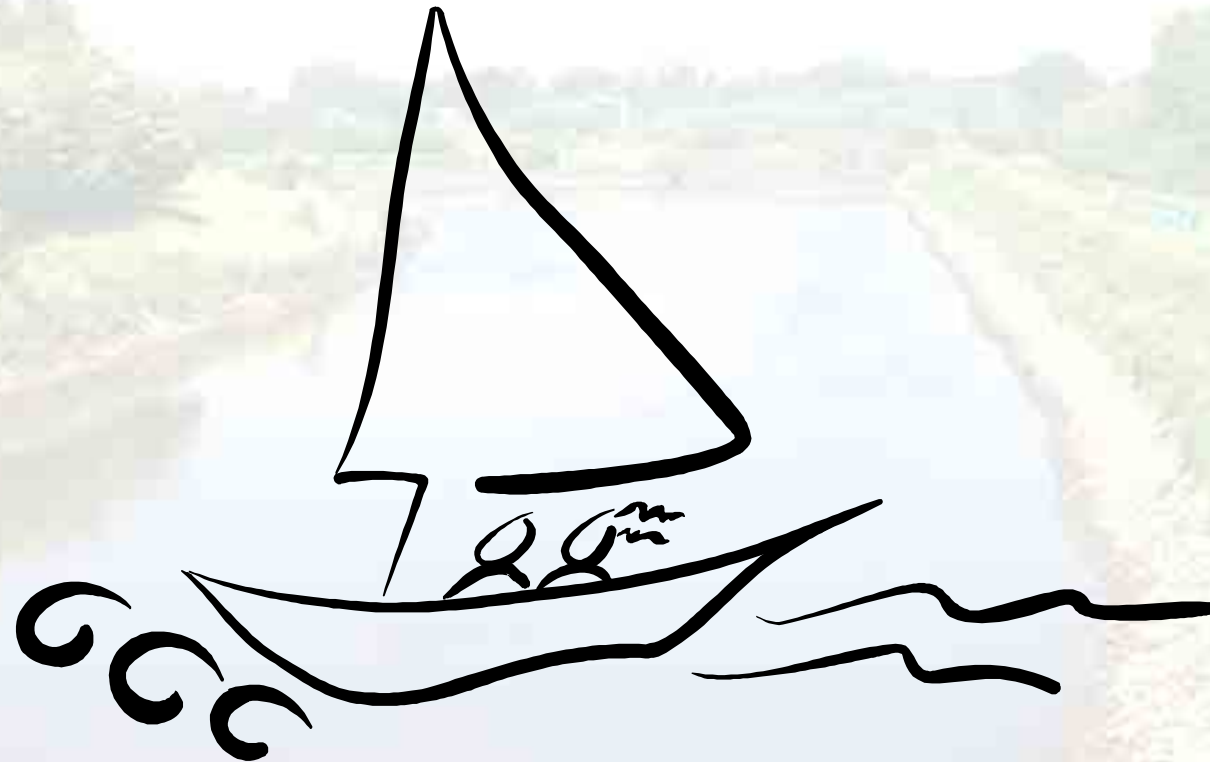


Scaldit



- **FROM NEEDS TO IMPLEMENTATION**

**Essential needs: sociological needs – be prospective**



**Security, Tourism & ecology**

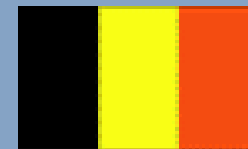
- **FROM NEEDS TO IMPLEMENTATION**

Essential needs: Politics needs – be creative!

## BELGIUM-1993

### The Saint Michel agreement

1 Federal state



3 regions



3 communautés



- **FROM NEEDS TO IMPLEMENTATION**

**Implementation:** a first minimum but successful experience

the International Commission for  
the protection of the Scheldt - 1994

2 states



3 regions



A creative & efficient tool to  
get prepared to the water  
framework directive



# ● FROM NEEDS TO IMPLEMENTATION

**Implementation:** a second treaty: the treaty of Gent



● 3/12/2002: signature of the second treaty for the Scheldt

● New name: International Commission of the Scheldt





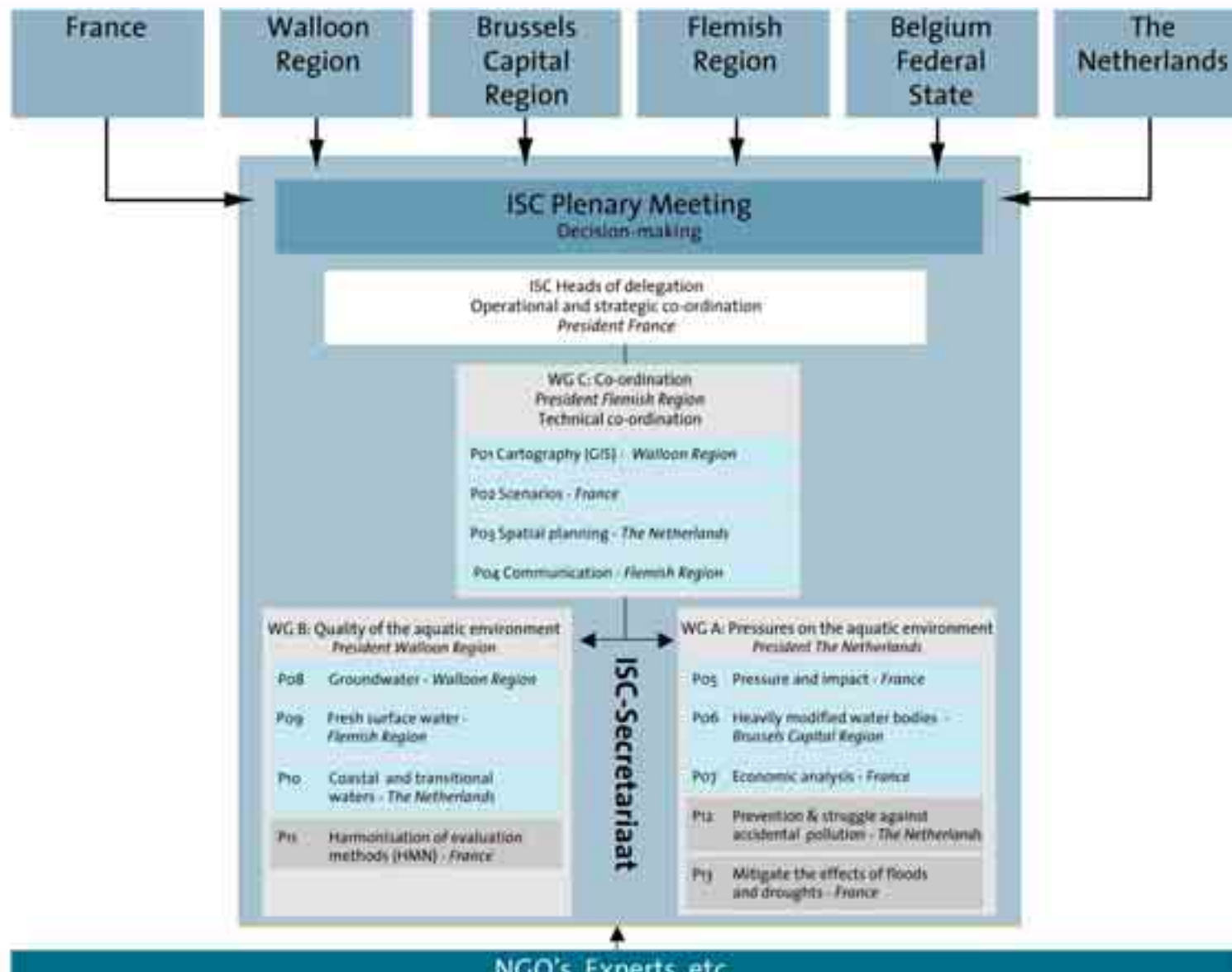
## II. DECISION MAKING IN THE ISC

**Factors:** strategy to success

<b>FACTORS</b>	<b>F</b>	<b>B</b>	<b>VL</b>	<b>W</b>	<b>BXL</b>	<b>NL</b>
LANGUAGE	F	F/NL	NL	F	<b>F/NL</b>	NL
% surf.scheldt/state	3	47	85	22	100	8
% pop.scheldt/state	8	75	92	39	100	3
CULTURE G:Germanic,L:latin	L	L/G	G/L	L/G	L/G	G
USE /INDUSTRY I:important/m:medium/R: reduced	I		I	I	R	R
USE/ TRANSPORT	m		I	m	m	R
USE/AGRICULTURE	m		I	m	R	m
USE/POPULATION	I/R		I	I	I	R
USE/ECOLOGY	m		m	m	R	I
USE/TOURISM	m/R	I	m	R	R	I

## II. DECISION MAKING IN THE ISC

work's organization: **organigram of the ISC**



## II. DECISION MAKING IN THE ISC

**Limits:** it's the decision of the parties!

- International but no supranational
- No rule of majority , only Consensus
- Should we work bottom-top, top-bottom or per item: which place for best implementation: local or international ?



# III. SCALDIT: FINANCIAL & ORGANISATION TOOL



## **Scaldit: Scaldis Integrated Testing**

Scheldt Pilot River Basin: France, 3 Belgian regions, The Netherlands



Veronique Van Den Langenbergh  
Vlaamse Milieumaatschappij (Flanders)

# III. SCALDIT: FINANCIAL & ORGANISATION TOOL

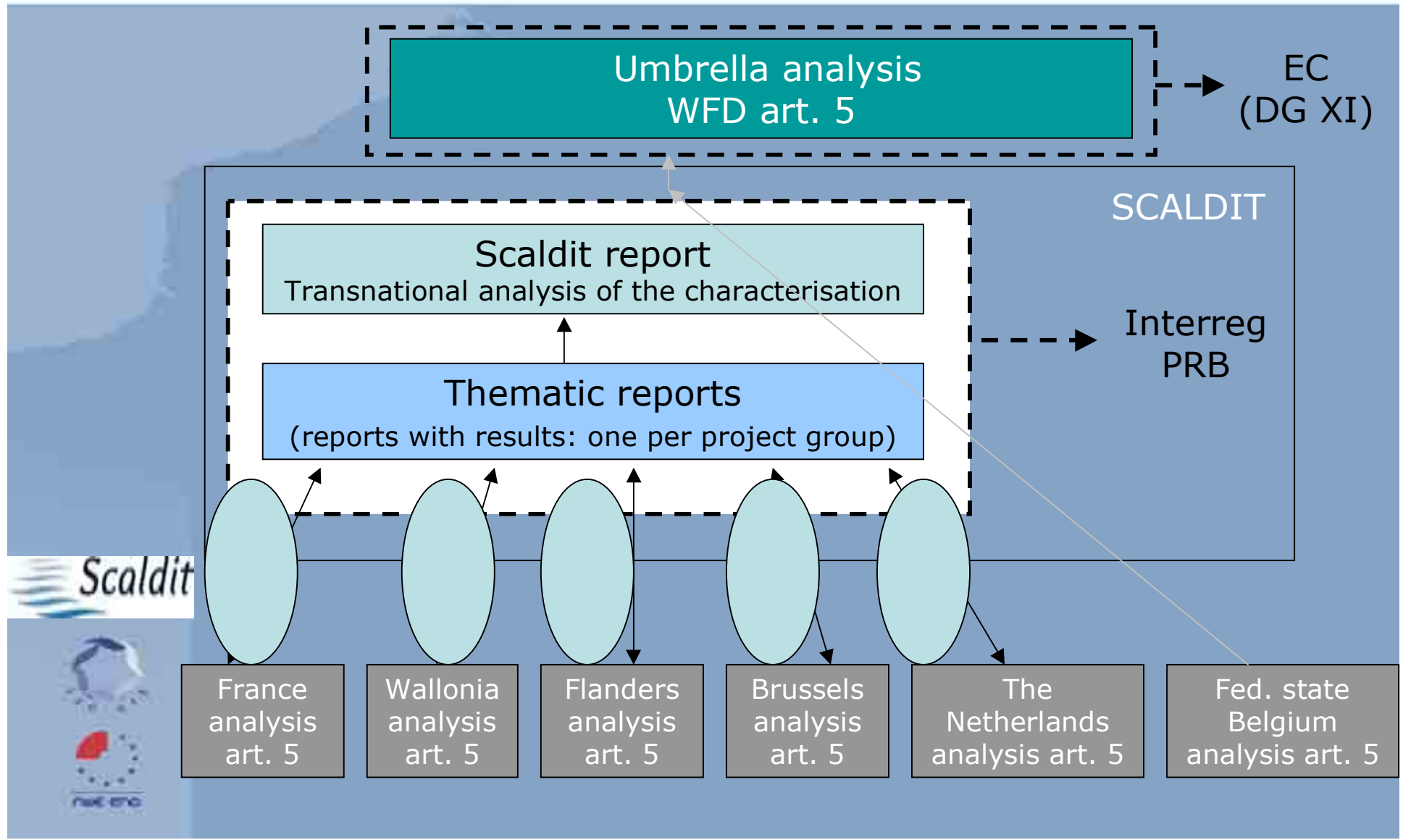
an international action programme for a cleaner and safer RBD of the Scheldt

- Duration of 3 years (**2003-2005**)
- **Co-operation** between F, B, NL **within the framework of the International Scheldt Commission**
- Financed by **Interreg IIIB NWE**
- **Budget: 6,8 mio €**
- Objectives of the project:
  - **testing of the CIS guidance documents** for the implementation of the WFD (one of 15 Pilot River Basins)
  - **transnational characterisation of the Scheldt river basin district:** Scaldit report (end 2004)
  - **First elements of the management plan of the Scheldt district**



# III. SCALDIT: FINANCIAL & ORGANISATION TOOL

## Schematic overview reporting obligations



# III. SCALDIT: FINANCIAL & ORGANISATION TOOL

results: Fresh surface water

- Comparison between partners of:
  - **Typologies**
  - **methods for designation water bodies**
  - **current knowledge on identification of reference conditions**
  - **existing monitoring networks****for lakes and rivers in IRBD Scheldt**
- Special attention given to **transboundary** water courses
- Description of current fresh water quality in IRBD Scheldt for main rivers



# III. SCALDIT: FINANCIAL & ORGANISATION TOOL

results: Coastal and transitional waters

- Development of:
  - common typology
  - common approach for designation water bodies for coastal and transitional waters



Scaldit





# III. SCALDIT: FINANCIAL & ORGANISATION TOOL

results: ground waters

- Designation of groundwater bodies
- Development of a common database for initial characterisation of groundwater



Scaldit



# III. SCALDIT: FINANCIAL & ORGANISATION TOOL

results: Heavily modified water bodies

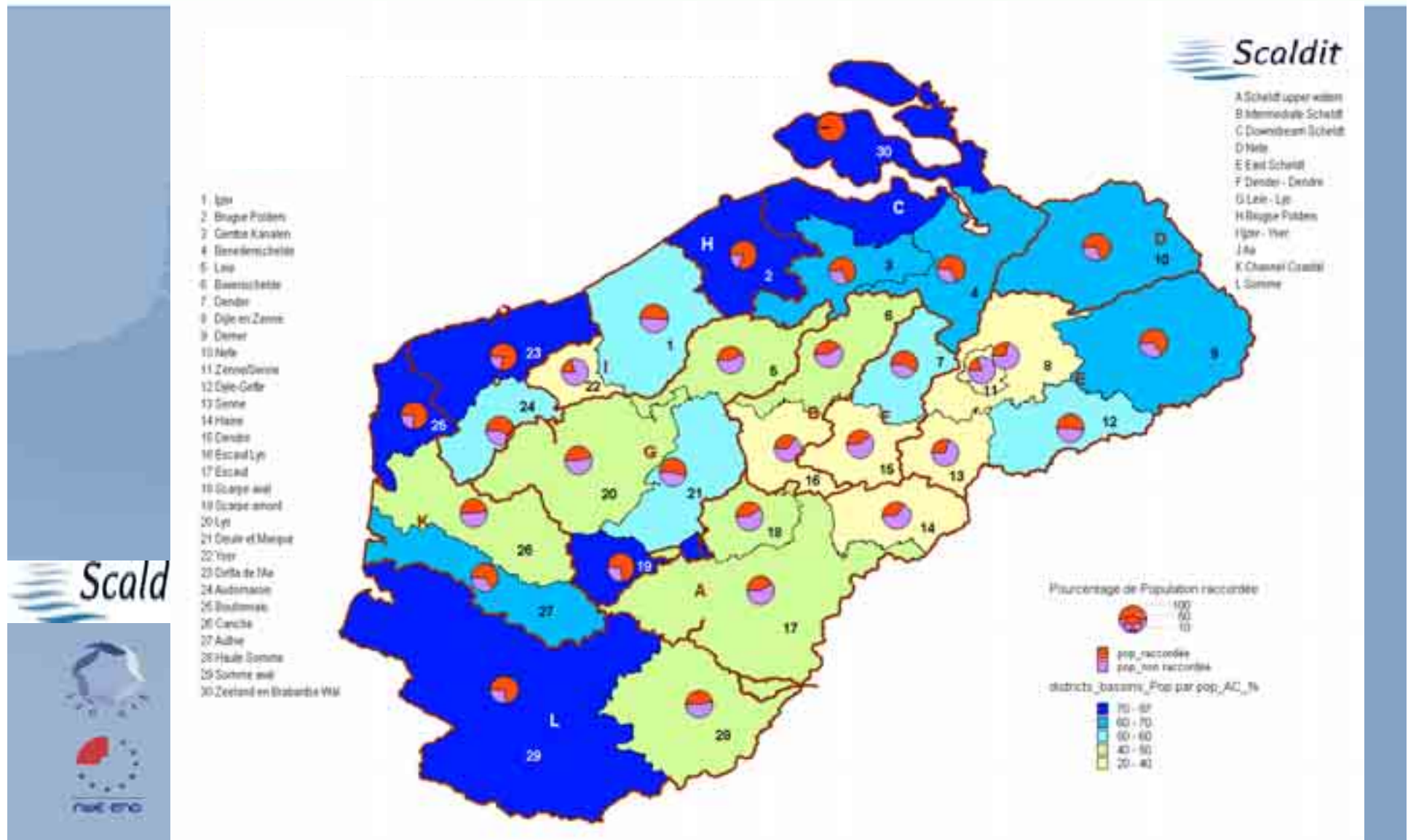
- Development of common concept ( $\neq$  common method) for provisional designation HMWB
- Pilot test on river Scheldt: testing of common concept on entire river Scheldt

Physical change	Hydro-morphological effect	Biological effect	Indicator
Change 1	×	×	×
	×	/	
Change 2		×	×
	×	×	×
Change 3	×	×	×
Change 4	×	×	
		×	
Change 5	/	/	/
Assessment of risk of not achieving environmental objectives			High risk



# III. SCALDIT: FINANCIAL & ORGANISATION TOOL

results: households connected to water treatment plants



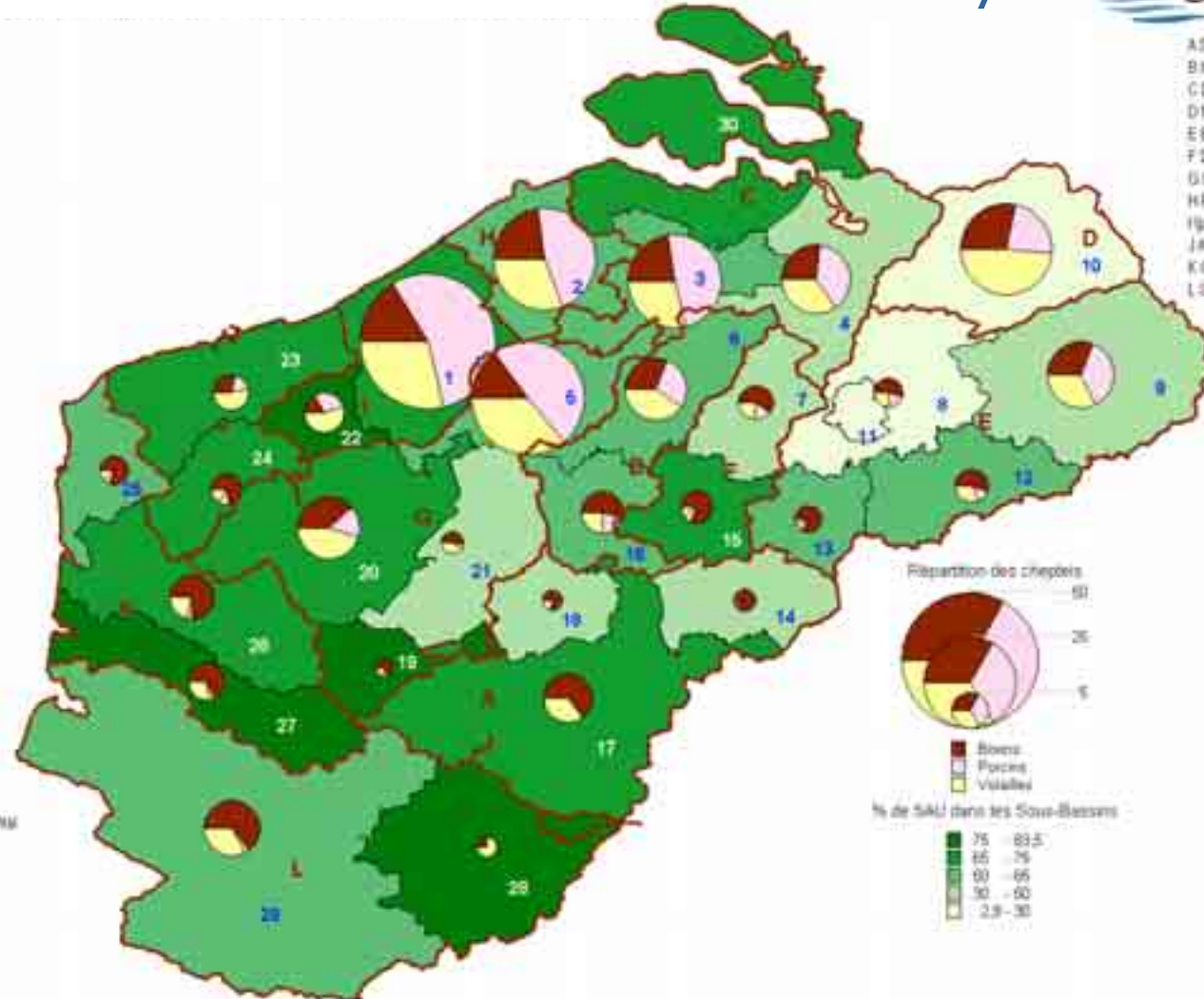
# III. SCALDIT: FINANCIAL & ORGANISATION TOOL

results: agriculture, an exemple of driving force

## agricultural surface and cattle density

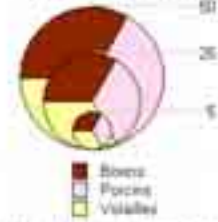


- 1 Lys
- 2 Bruges-Polde
- 2 Cambrai-Kavalen
- 4 Bénélois-scheide
- 5 Leas
- 6 Bassois-bette
- 7 Dender
- 8 Dyle en Zenne
- 9 Demer
- 10 Nete
- 11 Zenne/Senne
- 12 Esbe-Gefbe
- 13 Senne
- 14 Haine
- 15 Dender
- 16 Escal-Lys
- 17 Escal
- 18 Scarpe-aal
- 18 Scarpe-ahort
- 20 Lys
- 21 Deule et Marquet
- 22 Yser
- 23 Delle de Ma
- 24 Automane
- 25 Boulman
- 26 Canche
- 27 Aulne
- 28 Haute Somme
- 29 Somme-aal
- 30 Zeeland en Brabant WM



- A Scheldt upper-widom
- B Intermediale Scheldt
- C Downbeam Scheldt
- D Nete
- E East Scheldt
- F Dender - Dendre
- G Lein - Lys
- H Bruges-Polde
- I Yser - Yser
- J Ma
- K Channel Coastal
- L Somme

Répartition des chapeis



% de SAU dans les Sous-Bassins



# III. SCALDIT: FINANCIAL & ORGANISATION TOOL

## Risks factors and advantages of cooperation

- 
- **Language barrier** (French-Dutch in case of Scheldt PRB)
  - **Data availability and comparability**
  - **Consultation** needed on 2 levels:
    - internally
    - between partners
  - **Different priorities:** quality / safety
  - **Different agendas** to implement the WFD

***Risk factors: time-consuming, cost-raising, difficult to come to common approaches***

***Added value: agreements reached are solid basis for further work, complementarity between methods of partners, exchange of experience***



The International Commission of the Scheldt thanks you for your attention

If you need further informations go to our Internet site: [www.isc-cie.com](http://www.isc-cie.com)

