

« Liberté – Egalité – Fraternité »

**WELCOME IN FRANCE
at COP21**

**WATER AND ADAPTATION TO
THE EFFECTS OF CLIMATE CHANGE**

-Action Agenda-

2 December 2015





UNECE



Paris Pact on water and adaptation to climate change in the basins of rivers, lakes and aquifers

At the twenty-first Conference of the Parties to the United Nations Framework Convention on Climate Change (COP21 / CMP11) organized from 30 November to 11 December 2015 in Paris, **We**, representatives of governments, international organizations, donors, national and transboundary basin organizations of rivers, lakes or aquifers, local authorities, of the civil society and companies, support the integration of Water into the Climate change Action Agenda, especially for initiating or strengthening necessary adaptation actions in the basins of rivers, lakes, aquifers and large wetlands.

GENERAL STATEMENT

Climate change is already affecting and will increasingly affect the quantity and quality of freshwater and aquatic ecosystems, especially through the intensity and greater frequency of extreme hydrological events, such as floods and droughts, as well as the increase in ocean level, which threaten security, economic and social development and the environment.

We recognize that adaptation actions should be undertaken without delay to minimize the impacts of climate change on the populations' health and safety, on economic development and the environment, considering the importance of the protection of water-related ecosystems.

The basins are natural areas where water flows on the surface and in the subsoil: they are the relevant territories for organizing water resources management.

In order to ensure more effectiveness, these actions to adapt to climate change should thus be implemented at the level of river, lake and aquifer basins, through a joint, participative, integrated and sustainable water resources management.

We should act quickly before it is too late!

To that end, mobilizing new and increasing funding dedicated to climate change adaptation in basins is essential. Therefore, new basin organizations and existing ones should be financed and strengthened to facilitate the cooperation, coordination and exchange of information, dialogue, consultation and prevention of conflicts between stakeholders and to enhance the implementation of adaptation measures and the sharing of benefits on the basin scale,

We encourage donors to support prior assessments and actions for adaptation to climate change in basins,

Local authorities and communities, economic sectors and the civil society should be better associated and involved in basin management, including in the definition and implementation of adaptation measures.

Cooperation and exchange should increase between the institutions involved, especially among the basin organizations at the global and regional levels in order to facilitate the transfer of experience and know-how on best practices in basin management and adaptation to climate change.



PARIS2015
CONFÉRENCE DES NATIONS UNIES
SUR LES CHANGEMENTS CLIMATIQUES
COP21-CMP11

v14

Paris Pact



www.inbo-news.org
www.cop21.gouv.fr/en

1



International
Network
Of Basin
Organizations



**International
Network
Of Basin
Organizations**

**The UN Convention
for the international water courses management
in Europe – HELSINKY 1992**

**Network of Pilot Basin Organizations
to test measures for adapting to climate change**

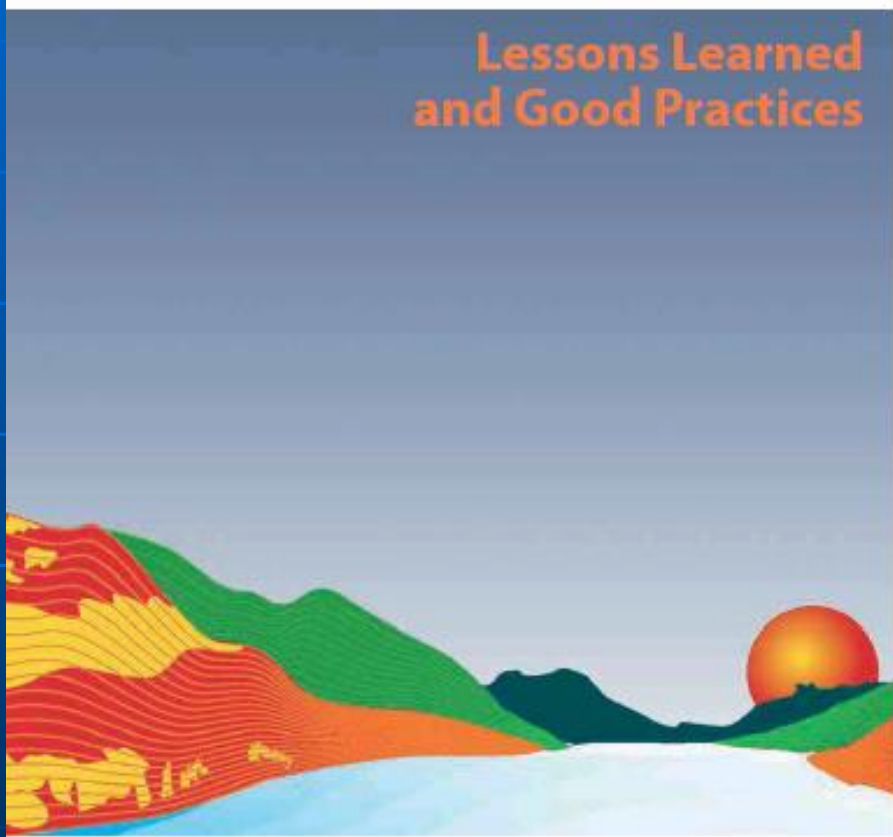




UNITED NATIONS ECONOMIC COMMISSION FOR EUROPE
INTERNATIONAL NETWORK OF BASIN ORGANIZATIONS

Water and Climate Change Adaptation in Transboundary Basins:

Lessons Learned and Good Practices



UNITED NATIONS



International
Network
Of Basin
Organizations



PARIS2015
CONFERENCE OF PARTIES
COP21-CMP11

FRESH WATER IS A TIME BOMB!!!



International
Network
Of Basin
Organizations



Water is one of the first victims of climate change!



PARIS2015
CONFERENCE OF THE PARTIES
OF THE UNITED NATIONS
COP21-CMP11

Climate change consequences



International
Network
Of Basin
Organizations

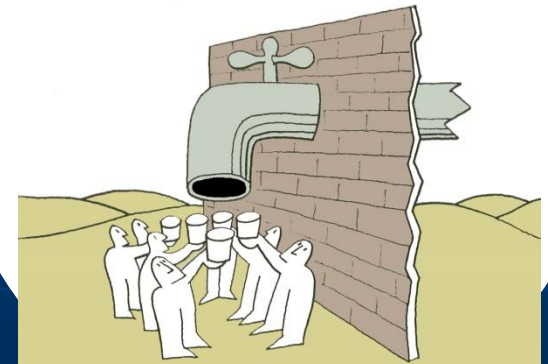


The climate change is likely to increase the frequency of extreme events, such as floods and droughts:

Conflicts!!



International
Network
Of Basin
Organizations



We should act quickly before it is too late!



PARIS2015
CONFÉRENCE DES NATIONS UNIES
SUR LES CHANGEMENTS CLIMATIQUES
COP21-CMP11



International
Network
Of Basin
Organizations

**Indeed, basins are the natural territories,
in which water runs,
on the soil or in the sub-soil,**

**whatever are the national or administrative boundaries
or limits crossed.**



**An overall approach should be organized
on the relevant scale
of basin areas of rivers, lakes and aquifers.**



Paris Pact on water and adaptation to climate change in basins



International
Network
Of Basin
Organizations

RECOMMENDED ACTIONS:

1) Reinforce capacity development and knowledge,

Establish risk warning and water information systems in a context of uncertainty.

2) Adapt basin management planning to climate change,

Better controlling water demand and developing a more efficient and sustainable use of water resources (including groundwater) - Enhance the services of water-related ecosystems

3) Reinforce governance,

Create new basin organizations and reinforce existing ones

Support mechanisms for the involvement of the stakeholders in basin management,

4) Ensure adequate financing.

Establish investment program and sustainable financing mechanisms

We do not have to reinvent the wheel to act quickly!

Did you sign it?



294 SIGNATORIES!!

WORLD BANK

United Nations
World Cultural and
Educational Organization

UNECE

OECD

OSS

Every drop counts
Count every drop
AMCOV
African Ministry Council on Water

FEDERO
FEOWAS

Global Water Partnership

IWRA

SIE-ISW-SIA

GREEN CROSS

IUCN

WWF

AquaFed
THE INTERNATIONAL FEDERATION OF
PROFESSIONAL WATER OPERATORS

SEMIDE
EMWIS

WCCE
WORLD COUNCIL
OF CIVIL ENGINEERS

Global Water Partnership
Central Eastern Europe

Global Water Partnership
Central Eastern Europe

INWEEB
IWSWCO Chair
International Network of
Water Environment Centres for the Balkans

MedWet

CATHALAC

EurAqua

Wetlands
INTERNATIONAL

Wetlands
INTERNATIONAL

igrac
International Groundwater Assessment Centre

RIVERS WITHOUT
BOUNDARIES

EUROPEAN ASSOCIATION
OF PLUMBING WATER OPERATORS

Aqua publica
europea
EUROPEAN ASSOCIATION
OF PLUMBING WATER OPERATORS

World Water Council

Ramsar

The Nature Conservancy

SIWI

INTERNATIONAL NETWORK
OF RAIN ORGANIZATIONS

RAOB - ANBO

NANBO
ROBAN
ROCAN

M

RELOC - RELOB

CEE NBO

EURO-RIOS
EUROPE-INEO

IKSR
CIPR
ICBR

CIPMS
IKSMS

icpdr
iksd

INTERNATIONAL WATER AND WASTE COMMISSION

INTERNATIONAL WATER AND WASTE COMMISSION

CIPEL
...pour que vive
l'eau de l'Union

AVBA
V

OMVS
ORGANISATION POUR
LA MISE EN VALEUR
DU FLEUVE SENEGAL

OMVS
ORGANISATION POUR
LA MISE EN VALEUR
DU FLEUVE SENEGAL

AGENCE DE L'EAU
ADOUR-GARONNE

AGENCE DE L'EAU
ADOUR-GARONNE

AGENCE DE L'EAU
ADOUR-GARONNE

AGENCE DE L'EAU
ADOUR-GARONNE

AGENCE DE L'EAU
ADOUR-GARONNE

AGENCE DE L'EAU
RHIN-MEUSE

AGENCE DE L'EAU
RHIN-MEUSE

AGENCE DE L'EAU
RHIN-MEUSE

AGENCE DE L'EAU
RHIN-MEUSE

AGENCE DE L'EAU
RHIN-MEUSE

AGENCE DE L'EAU
RHIN-MEUSE

AGENCE DE L'EAU
RHIN-MEUSE

AGENCE FRANÇAISE
DE DEVELOPPEMENT

AGENCE FRANÇAISE
DE DEVELOPPEMENT

AGENCE FRANÇAISE
DE DEVELOPPEMENT

AGENCE FRANÇAISE
DE DEVELOPPEMENT

AGENCE FRANÇAISE
DE DEVELOPPEMENT

AGENCE FRANÇAISE
DE DEVELOPPEMENT

AGENCE FRANÇAISE
DE DEVELOPPEMENT

AGENCE FRANÇAISE
DE DEVELOPPEMENT

AGENCE FRANÇAISE
DE DEVELOPPEMENT

AGENCE FRANÇAISE
DE DEVELOPPEMENT

AGENCE FRANÇAISE
DE DEVELOPPEMENT

AGENCE FRANÇAISE
DE DEVELOPPEMENT

International
Office
for Water

International
Office
for Water

International
Office
for Water

International
Office
for Water

International
Office
for Water

International
Office
for Water

International
Office
for Water

International
Office
for Water

International
Office
for Water

International
Office
for Water

International
Office
for Water

International
Office
for Water

MINISTERIO DELL'AMBIENTE
E DELLA TUTELA DEL TERRITORIO E DEL PAES.

UNIVERSITÀ
TUSCANA

FONDAZIONE
FRANCE ALBERTI DE MONACO

DUTCH WATER
AUTHORITIES

Povodi Odry
sčítací podnik

POVODÍ
VLTAVY

POVODÍ
MORAVY

APELE ROMANE

ADMINISTRAȚIA NAȚIONALĂ A APEI
ROMÂNIE

Ministerstvo Životočno prostredia
Slovenskej republiky

Ministerstvo Životočno prostredia
Slovenskej republiky

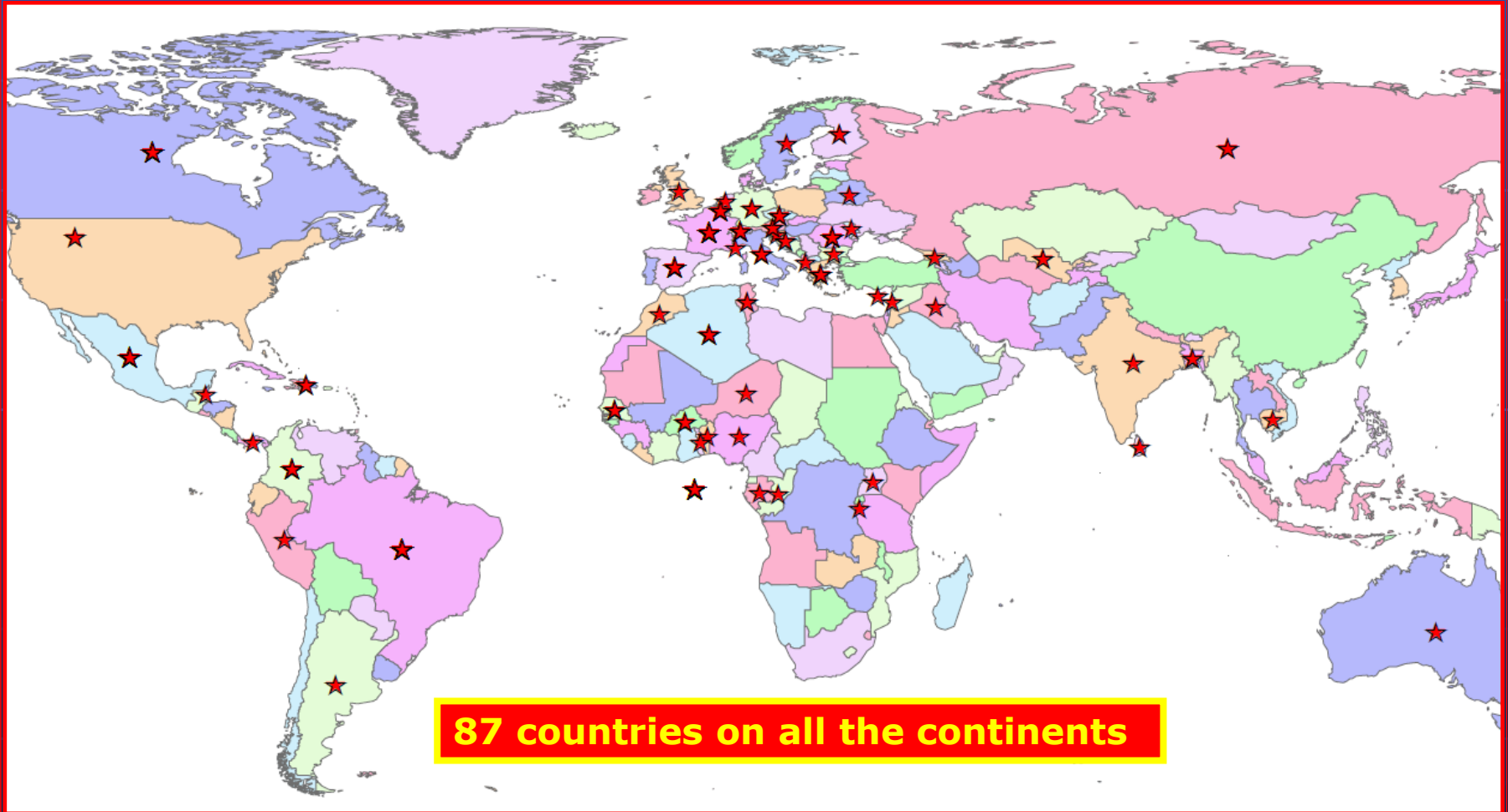
SIG



World Map of the «Paris Pact» signatories



International
Network
Of Basin
Organizations





**International
Network
Of Basin
Organizations**

Today, More than **294** organizations have signed the Pact!

- **International Organisations = 34**
- **Transboundary basin Authorities = 13**
 - Parties- Countries = 52

- **INBO' Networks of Basin Organizations = 8**

- **239 others signatories in 54 countries**
(87 countries ic. others parties in transboundary BO)
 - Ministries and national water agencies = 64

Paris Pact on water and adaptation to climate change in the basins of rivers, lakes and aquifers

At the twenty-first Conference of the Parties to the United Nations Framework Convention on Climate Change (COP21 / CMP11) organized from 30 November to 11 December 2015 in Paris, **We**, representatives of governments, international organizations, donors, national and transboundary basin organizations of rivers, lakes or aquifers, local authorities, of the civil society and companies, support the integration of Water into the Climate change Action Agenda, especially for initiating or strengthening necessary adaptation actions in the basins of rivers, lakes, aquifers and large wetlands.

We should act quickly before it is too late!

To that end, mobilizing new and increasing funding dedicated to climate change adaptation in basins is essential. Therefore, new basin organizations and existing ones should be financed and strengthened to facilitate the cooperation, coordination and exchange of information, dialogue, consultation and prevention of conflicts between stakeholders and to enhance the implementation of adaptation measures and the sharing of benefits on the basin scale,

We encourage donors to support prior assessments and actions for adaptation to climate change in basins,

Local authorities and communities, economic sectors and the civil society should be better associated and involved in basin management, including in the definition and implementation of adaptation measures.

Cooperation and exchange should increase between the institutions involved, especially among the basin organizations at the global and regional levels in order to facilitate the transfer of experience and know-how on best practices in basin management and adaptation to climate change.

The basins are natural areas where water flows on the surface and in the subsoil: they are the relevant territories for organizing water resources management.

In order to ensure more effectiveness, these actions to adapt to climate change should thus be implemented at the level of river, lake and aquifer basins, through a joint, participative, integrated and sustainable water resources management.

PARIS2015
CONFÉRENCE DES NATIONS UNIES
SUR LES CHANGEMENTS CLIMATIQUES
COP21-CMP11

v14

Paris Pact

www.inbo-news.org
www.cop21.gouv.fr/en