

The importance of monitoring  
freshwater ecosystems to assess  
any change in their extent, quality  
and quantity over time  
(SDG indicator 6.6.1)

---

**African Great Lakes International Conference 2017**  
**Conservation and Development in a Changing Climate**

---

# UN Environment and Freshwater

---

**UN Environment** is the leading global environmental authority that sets the global environmental agenda, promotes the coherent implementation of the environmental dimension of sustainable development within the United Nations system and serves as an authoritative advocate for the global environment.

**UN Environment Freshwater Unit** supports countries in conserving, restoring and sustainably managing their freshwater ecosystems, the biodiversity they contain and the products and services they provide for human well-being and prosperity.



---

United Nations  
Environment Programme

# UN Environment Freshwater Strategy

---

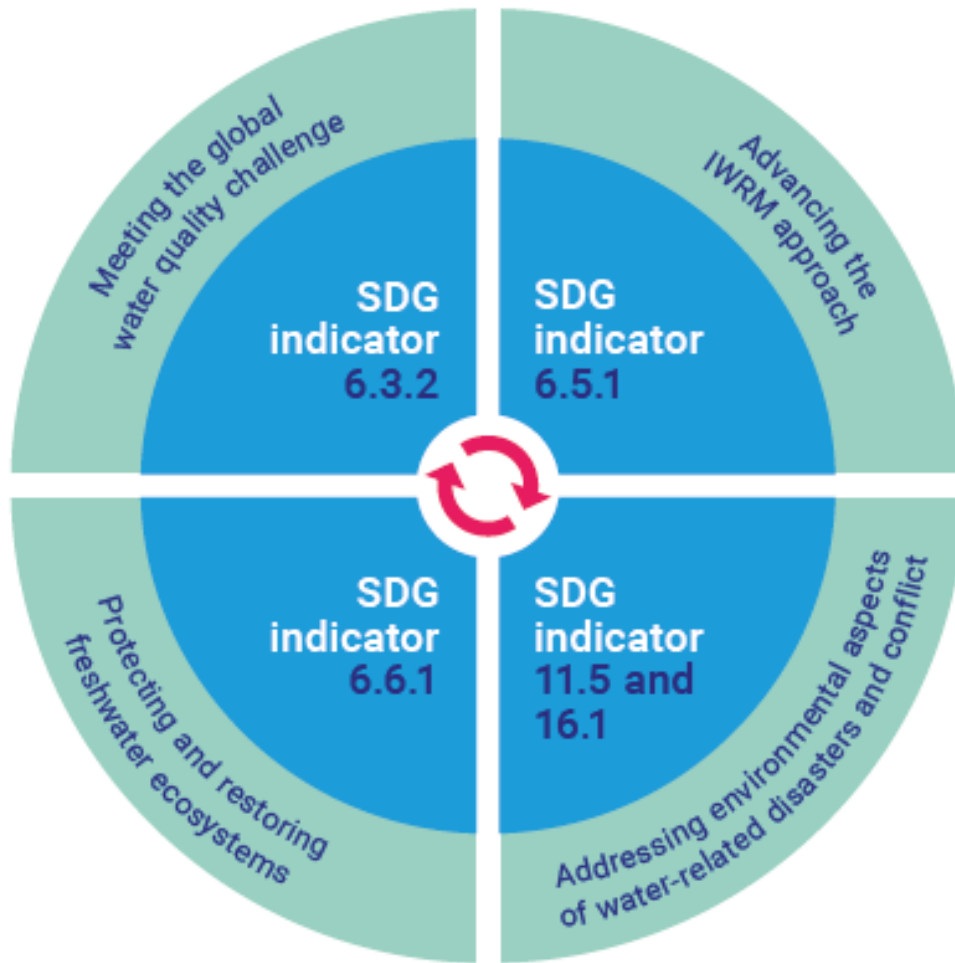


**Protecting, managing and restoring freshwater**  
in support of human well-being and sustainable  
development

Preserving and **protecting the world's  
freshwater is the responsibility of countries** and  
often requires commitment to collaborate with  
neighboring countries to protect and manage  
freshwater

# Priorities of UN Environment Freshwater Strategy

---

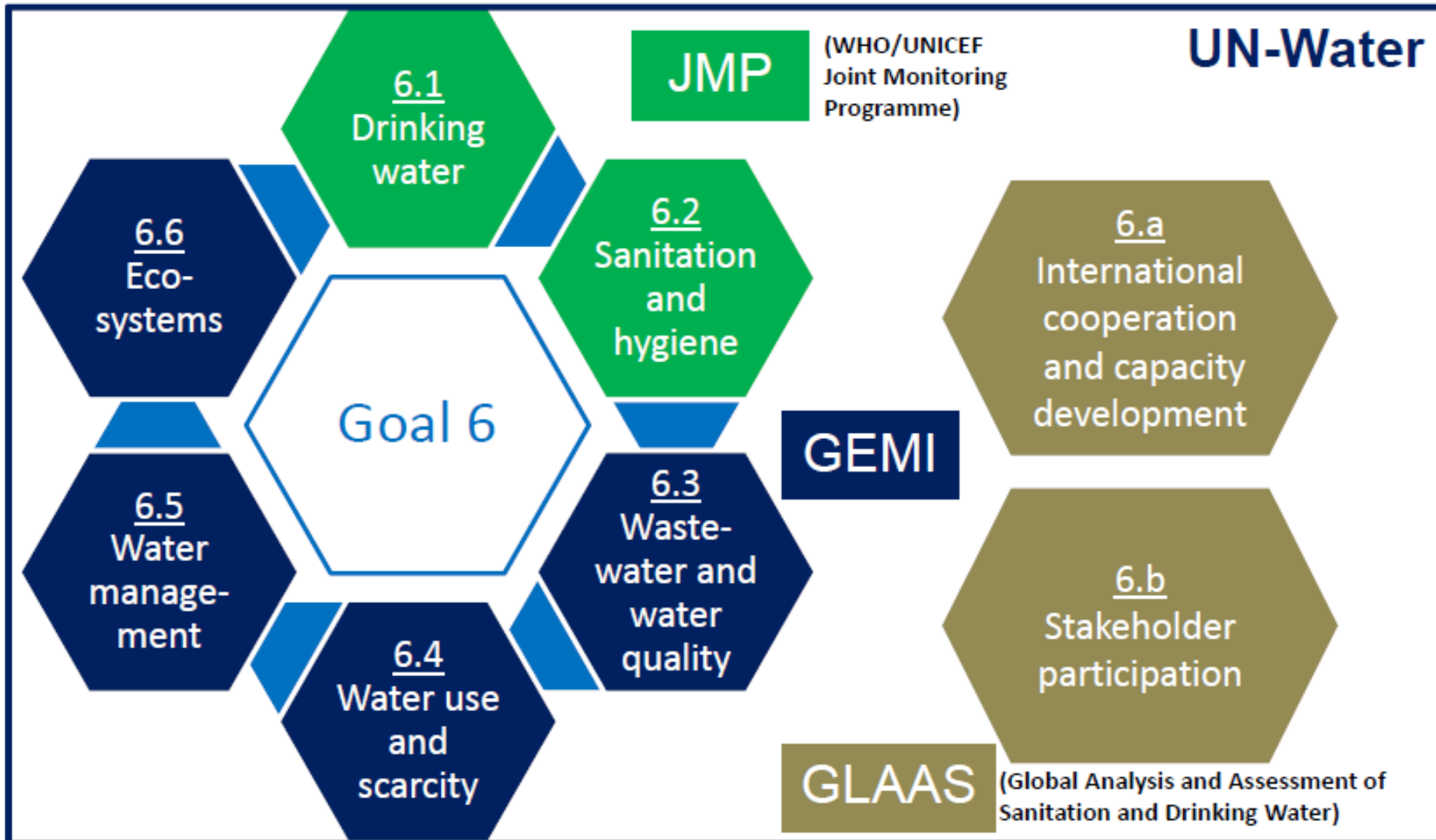


1. Meeting the global **water quality** challenge (SDG target 6.3)
2. Protecting and restoring **freshwater ecosystems** (SDG target 6.6)
3. Advancing the **Integrated Water Resources Management** approach (SDG target 6.5)
4. Promoting resilience and addressing the environmental aspects of **water-related disasters and conflict** (SDG targets 11.5 and 16.1)

# Monitoring of Goal 6

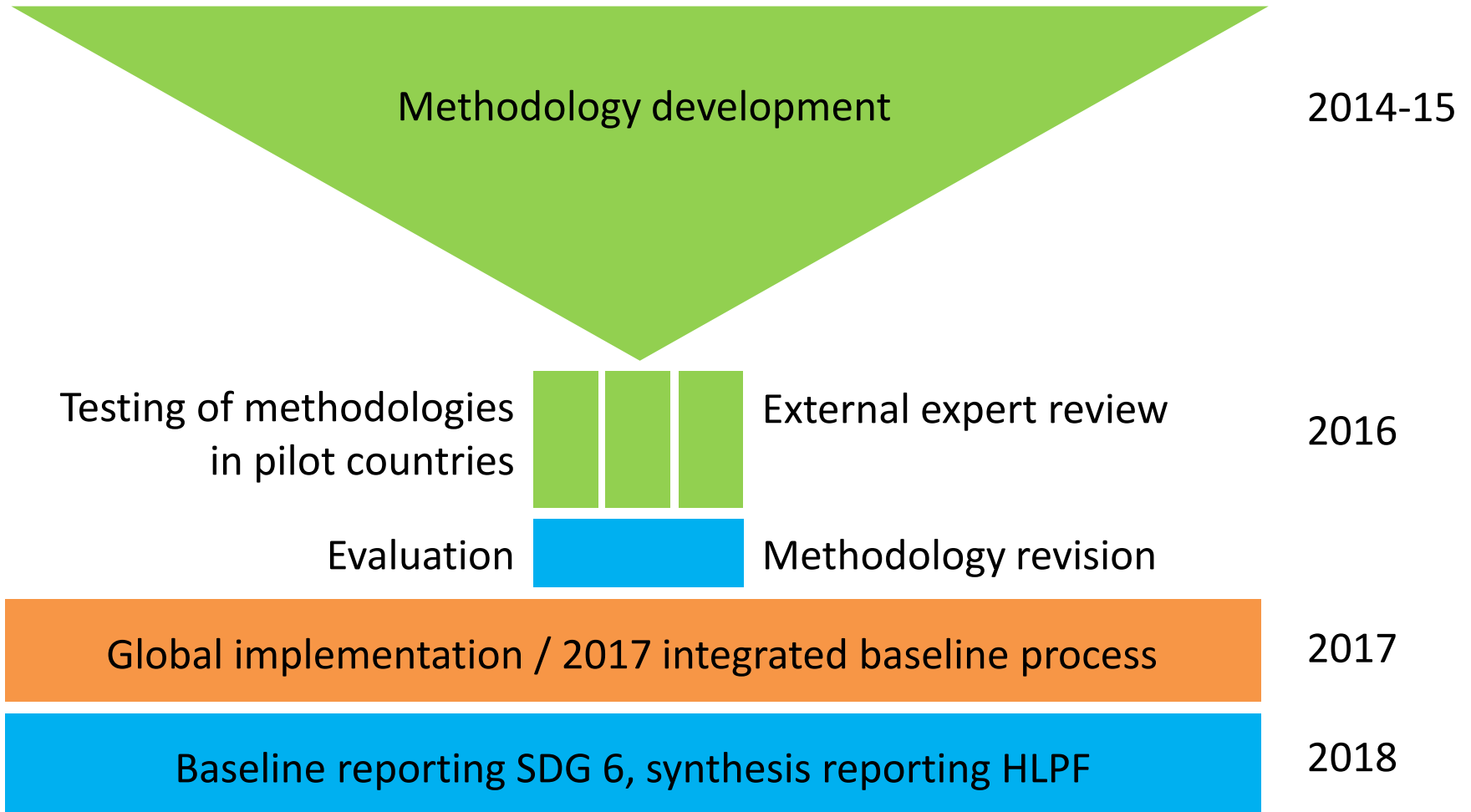


# Integrated Monitoring Initiative for SDG 6

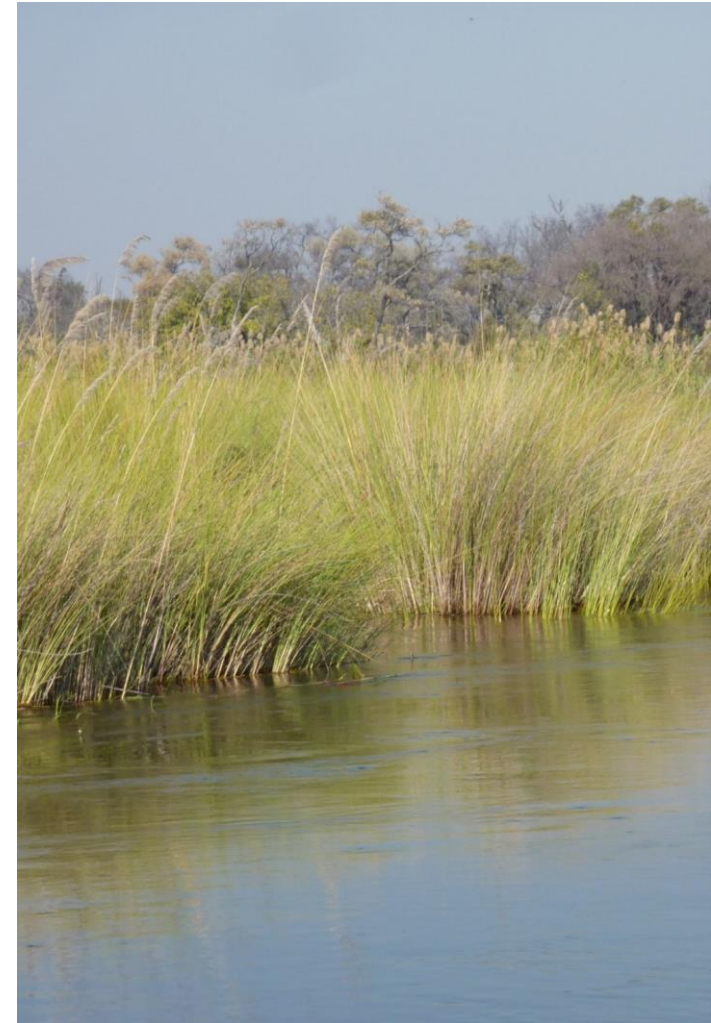
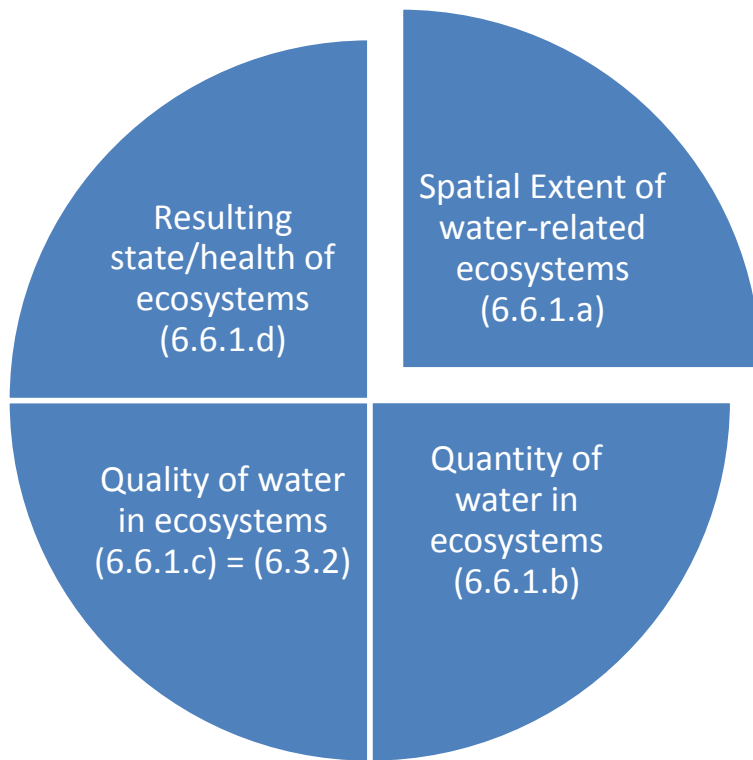


# The process of collecting freshwater data

---



# Indicator 6.6.1 – Change in the extent of water-related ecosystems over time





# Data Submission Form for Indicator 6.6.1

## Overview

### INTRODUCTION

This data submission form serves as the basis to collect indicator reporting data for the SDG indicators 6.3.2 (Proportion of bodies of water with good ambient water quality) and 6.6.1 (Change in the extent of water-related ecosystems over time). The data is collected by UN Environment and will be used for a SDG6 synthesis report being presented at a High Level Political Forum in 2018.

The terms used throughout the submission form are defined on table "Definitions". The table description and required format.

The tables ask for data on both indicators aggregated at the level of reporting basin district: "Extent" for indicator 6.6.1). These data are automatically aggregated to the national level on "Freshwater Extent" for indicator 6.6.1, respectively.

Please note that all fields in the form are formatted and need to be entered as 'Text' to prevent decimal separator for all decimal numbers. The tables contain data validations to ensure correct will see an error message with information about the required format. If data are copied into patterned fields are filled with input from other tables and cannot be edited. All fields that can as well.

### STEPS TO FOLLOW

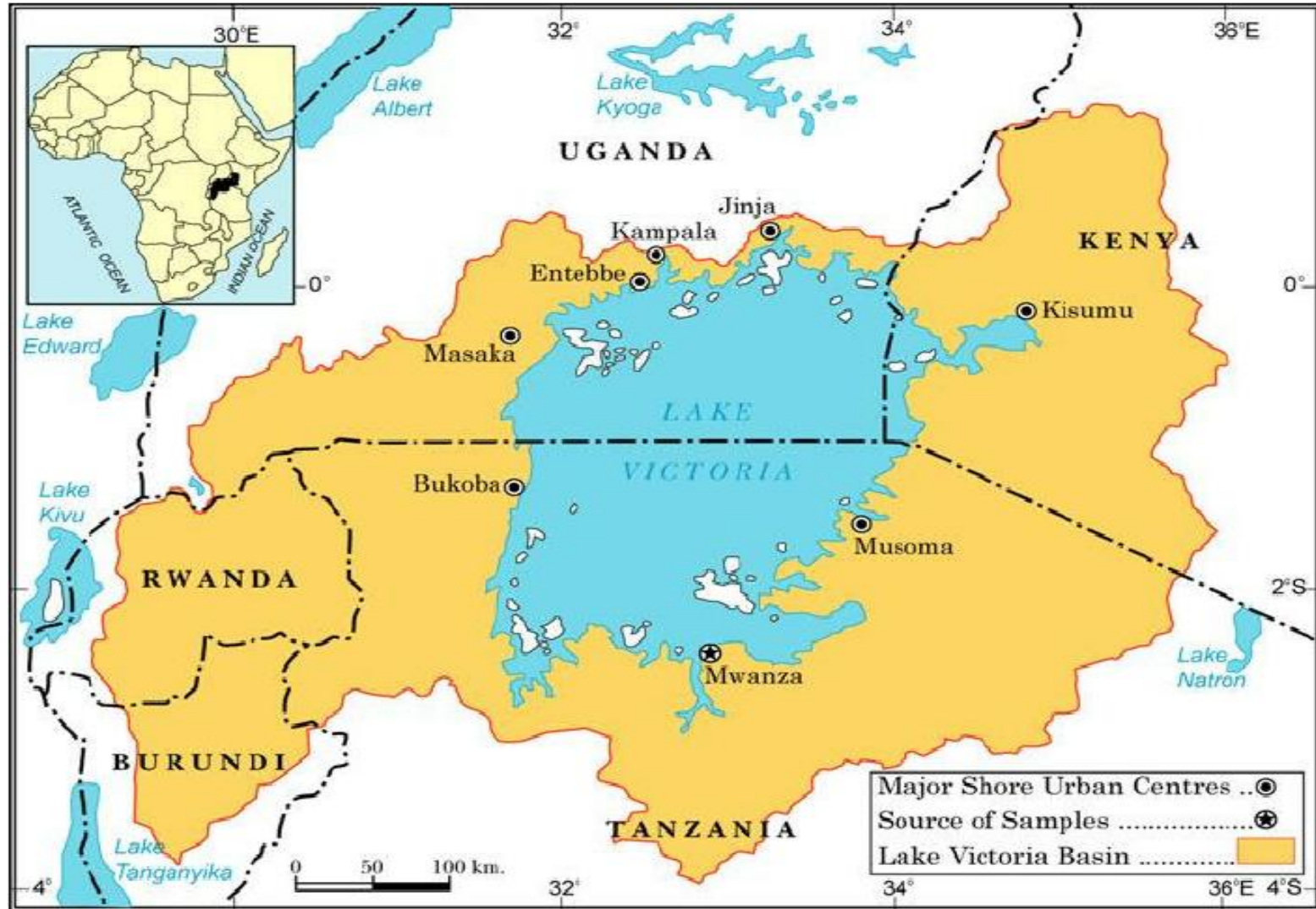
- 1 Please start with entering the required information on Table "Submission Information".
- 2 Enter the metadata for the reporting basin districts on Table "Identification of Districts". The reporting district code serves as reference for the reporting basin district tables "Water Quality" and "Freshwater Extent" and is copied automatically.
- 3 Enter the required data for the ambient water quality indicator for each reporting basin district on Table "Water Quality". The percentages of water bodies with good quality (columns I to L) are automatically calculated based on the inputs in columns C to H. If a certain water body type has not been assessed, please enter 0 in both columns for the number of water bodies and the number of water bodies with good quality.
- 4 Enter the required data for the target values used to calculate the water quality indicator on Table "Water Quality Targets". For each reporting basin district, water body type and parameter report the minimum and maximum target values used.
- 5 On Table "National Water Quality" the national water quality indicator and related metadata are calculated automatically from the inputs at reporting basin district level on Table "Water Quality". This table cannot be edited.
- 6 Enter the required sub-indicator data for each reporting basin district on Table "Freshwater Extent". Total spatial extent and total volume (column F and K) are automatically calculated from the input in the preceding columns. The data for the water quality subindicator is automatically copied from the Table "Water Quality".
- 7 On Table "National Freshwater Extent" the national sub-indicators are calculated automatically from the inputs at reporting basin district level on Table "Freshwater Extent" and from the Table "National Water Quality". This table cannot be edited.

**Contact us:** If you have any questions, contact the UN Environment Freshwater Team: [sdg6waterquality.ecosystems@unep.org](mailto:sdg6waterquality.ecosystems@unep.org)

Spatial extent of river water bodies	Total spatial extent of all water-related ecosystems	Assessment period water quantity	Water quantity of open water bodies	Water quantity of river water bodies	Water quantity of groundwater bodies	Total water quantity of all water-related ecosystems
--------------------------------------	--	----------------------------------	-------------------------------------	--------------------------------------	--------------------------------------	--

Assessment period water quality	Percentage of open water bodies with good quality	Percentage of river water bodies with good quality	Percentage of groundwater bodies with good quality	Percentage of water bodies with good quality
---------------------------------	---	--	--	--

# Transboundary waters (AGLs)



Thank you.



For further information for monitoring and reporting SDG 661 (water related ecosystems) and (632 ambient water quality) please contact:

[stuart.crane@unep.org](mailto:stuart.crane@unep.org)

UN Environment: <http://www.unep.org/ecosystems/freshwater>

UN Water: <http://www.sdg6monitoring.org>

---

[stuart.crane@unep.org](mailto:stuart.crane@unep.org)

[www.unep.org](http://www.unep.org)