

# First International Environment Forum for Basin Organizations

UNEP, Nairobi, Kenya, 26-28 November 2014

## Basin - wide Decision Support System for the Management of Flood and Drought: The Case of the Volta

Charles Biney  
ED, VBA



# The Volta Basin



Country	% of Basin Area	% of Country
<b>Benin</b>	<b>3.41</b>	<b>12.1</b>
<b>Burkina Faso</b>	<b>42.9</b>	<b>62.4</b>
<b>Cote d'Ivoire</b>	<b>2.48</b>	<b>3.1</b>
<b>Ghana</b>	<b>41.6</b>	<b>70.1</b>
<b>Mali</b>	<b>3.12</b>	<b>1.0</b>
<b>Togo</b>	<b>6.41</b>	<b>45.0</b>

VBA established 2007



# Situations Requiring Joint Action for Food Management

- Parts of Volta basin prone to flooding:  
e.g., 2007-2010
- Lery dam operation in Burkina Faso (BF-  
Mali)
- Operation of Bagre dam Spillway; BF-  
GH
- Drought in Sahel and Savannah Zones

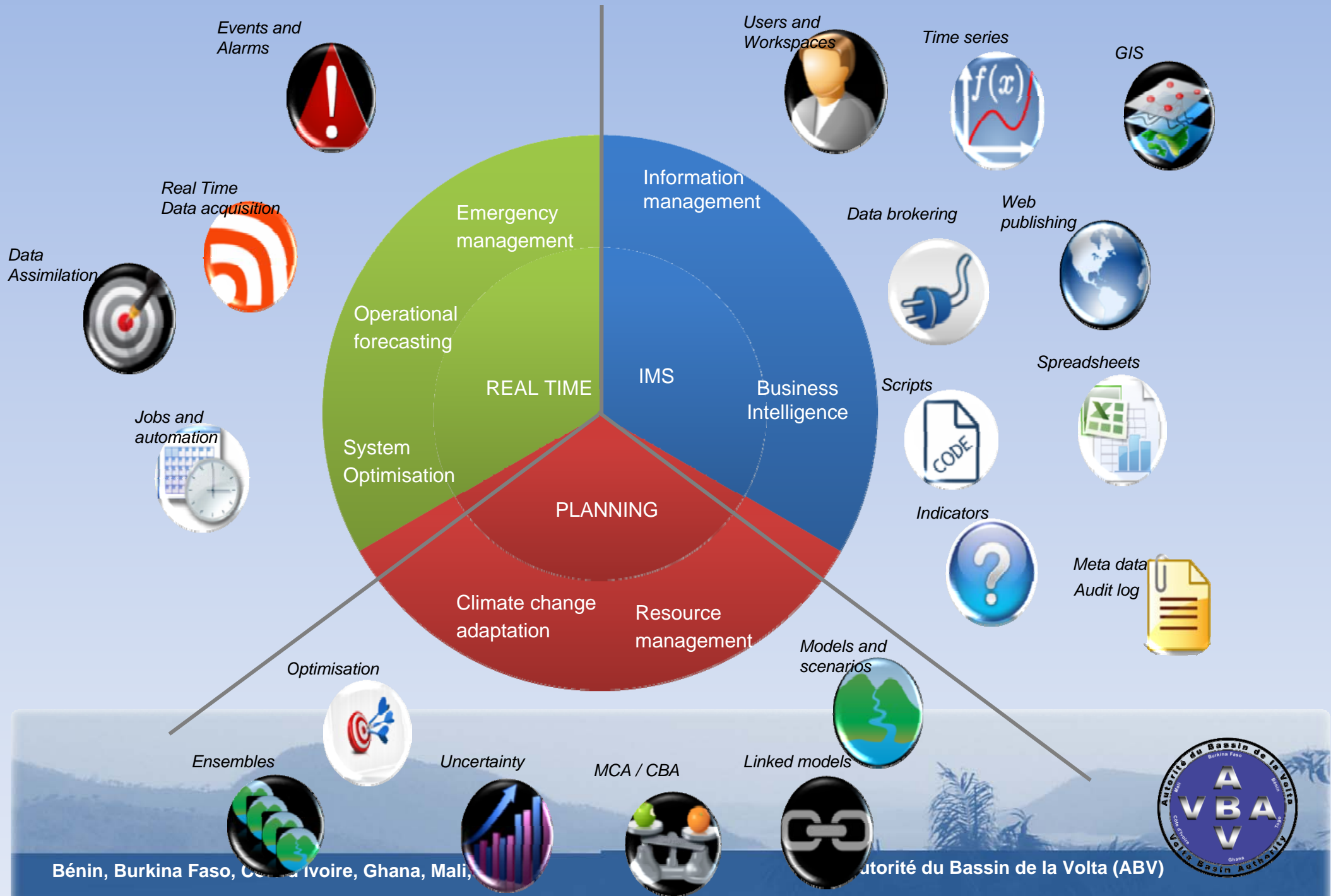


# Basin - wide Decision Support System

- Currently, no comprehensive system available
- Attempts by various studies and projects
  - Volta Basin Authority - **hydrological model will integrate a sub-regional flood forecasting module**
    - Volta-HYCOS Project
    - VBA Observatory
- UNEP GEF Flood and Drought Managt Tools



# MIKE CUSTOMISED Functional Components



# Other Sub-regional initiatives on flood management

- Flood information exchange between SONABEL and VRA on Bagre dam releases
- Joint flood management between Burkina Faso and Mali Sourou River
- West African Science Service Centre for Climate Change and adapted Land Use (WASCAL)



# Major Challenges

- Weakening and degradation of data collection and information systems in many countries
- Inadequate human and financial resources

ANBO Strategy 2015-2025:

***Objective 4: Data, information and knowledge management capacity to support transboundary water resources management is strengthened;***



# Roles of Basin & Regional Institutions

- **ANBO** Common platform to strengthen African BOs
- **RECs (ECOWAS):** Coordination, Financial and Political support.
- **ACMAD, AGRHYMET:** Training, Research, Implementation , Coordination and Dissemination
- **BOs:** Capacity Building and Data Collection; Lead partnerships for basin development







***THANK YOU FOR YOUR  
ATTENTION***

