



THE OPERATIONAL TOOLS THAT ALLOW ACHIEVING TRANSBOUNDARY COOPERATION IN THE LAKE CHAD BASIN



*Presented by Michel DIMBELE-KOMBE
Director of Water Resources and Environment
Lake Chad Basin Commission (LCBC)*



- **HYDROGRAPHY OF LAKE CHAD**

Is composed of a fresh water spring covering a Surface area of 2,400,000 km²

Basin is vital for biodiversity and its main rivers are Chari-Logone (95%) in CAR and Komadugu-Yobe (15%) in Nigeria

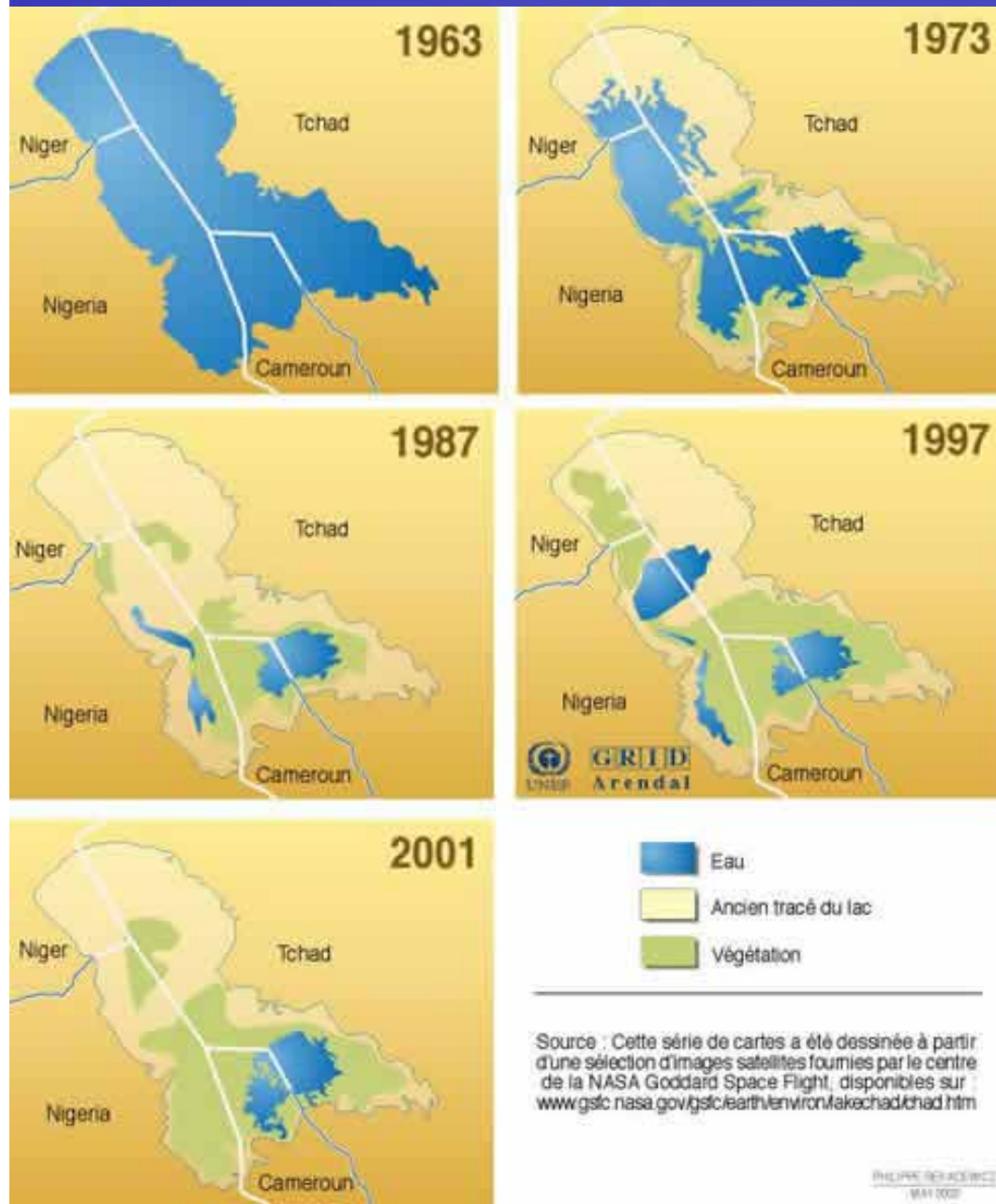
- **TO MANAGE THIS RESOURCE**

Convention of Fort Lamy and Statute relating to the development of the Lake Chad were signed on 22 May 1964 between Cameroon, Chad, Niger and Nigeria.

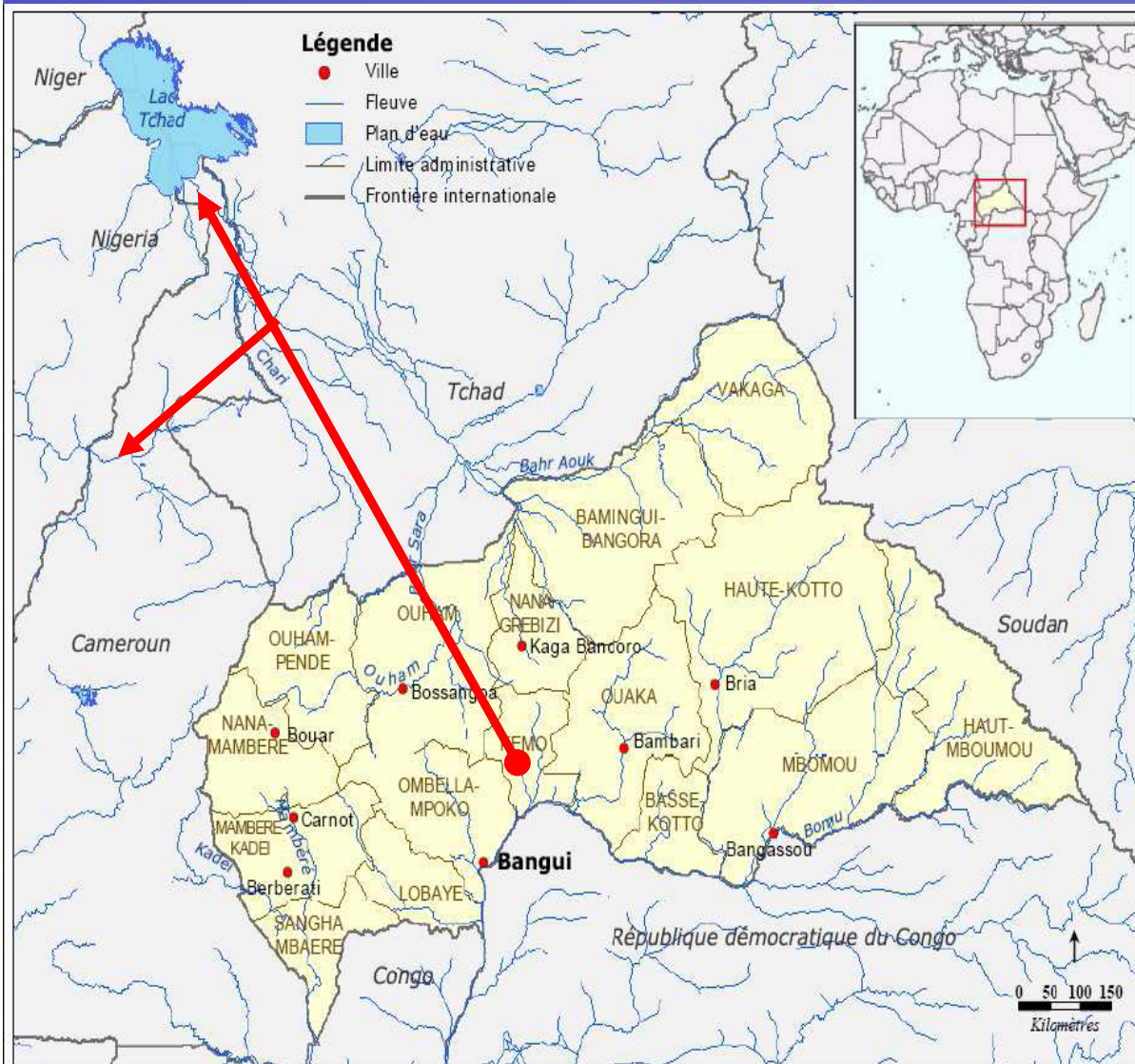
In 1994, Central African Republic joined the Lac Chad Basin Commission

Libya joined to become the sixth member at the 12th Summit of heads of State and Government on 27 March 2008

Sudan and Algeria are expected to join. Sudan's application has already accepted at the 10th Summit in July 2000.



Environmental problems :
The transboundary Diagnostic Analysis (TDA) pinpointed 7 major environmental problems in the basin:
1) variability hydrological regime; 2) availability of fresh water; 3) water pollution; 4) reduction of the viability of biological resources; 5) losses in biodiversity; 6) losses and modification of ecosystems, sedimentation in rivers and water bodies; 7) invasive species



Exemple1:

“Water transfer from Oubangui to Lake Chad was projected by 1997, as the natural environment of the Lake Chad basin has deteriorated significantly and some pessimistic forecasts even predicted Lake Chad’s disappearance by 2025 if no action is taken”



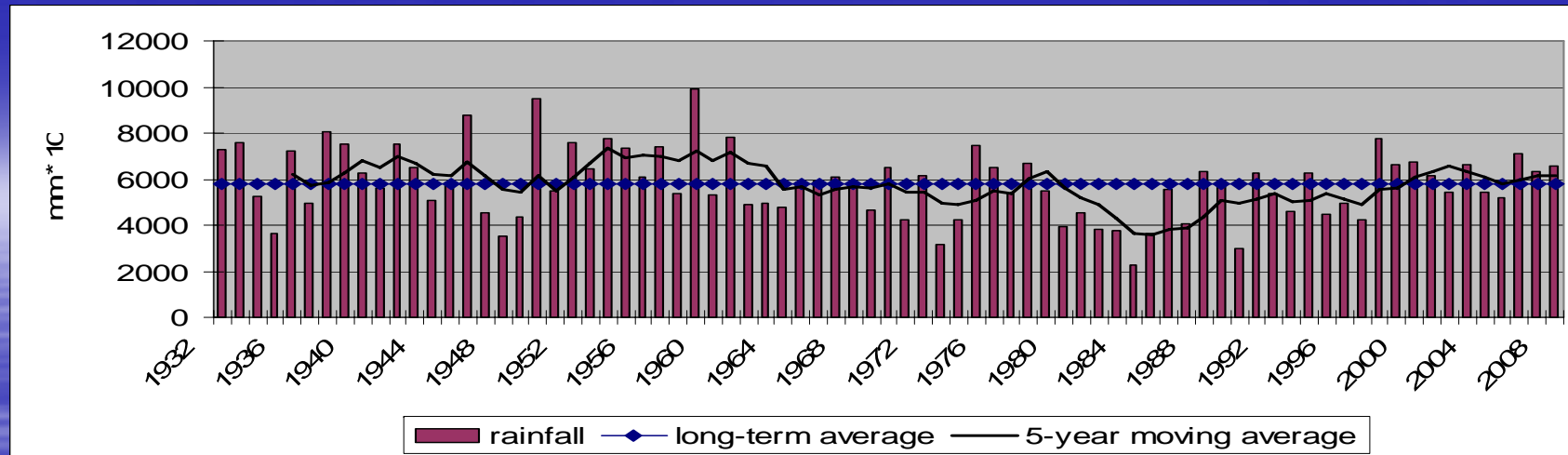
SAP

Exemple 2: *To deal with the situation LCBC has put in place the Strategic Action Programme in 2008, which is a political document aiming to provide a strategic approach on the environmental management and conservation of resources in Lake Chad Basin*

This should encourage :

- integrated management of river basin*
- sustainable collection, treatment and management of data*
- sustainable restoration and management of Lake Chad and its ecosystems, but*

Financing remains a key issue of the SAP



- **Exemple3:** *An agreement of data exchange was signed in 2008 between the member states of LCBC to improve the Integrated Water Resource Management in the basin*



Exemple 4: Water Charter for the Lake Chad Basin;

- *The African Deveopment Bank (ADB) agreed to finance 890 000 Euros the study in the frame of African Water Facility (AWF)*
- *The community of interests that links the basin's tributary states justifies the drawing up and popularization of Charter, which govern cooperation between basin States on the reasonable and equitable use of such a resource*

