



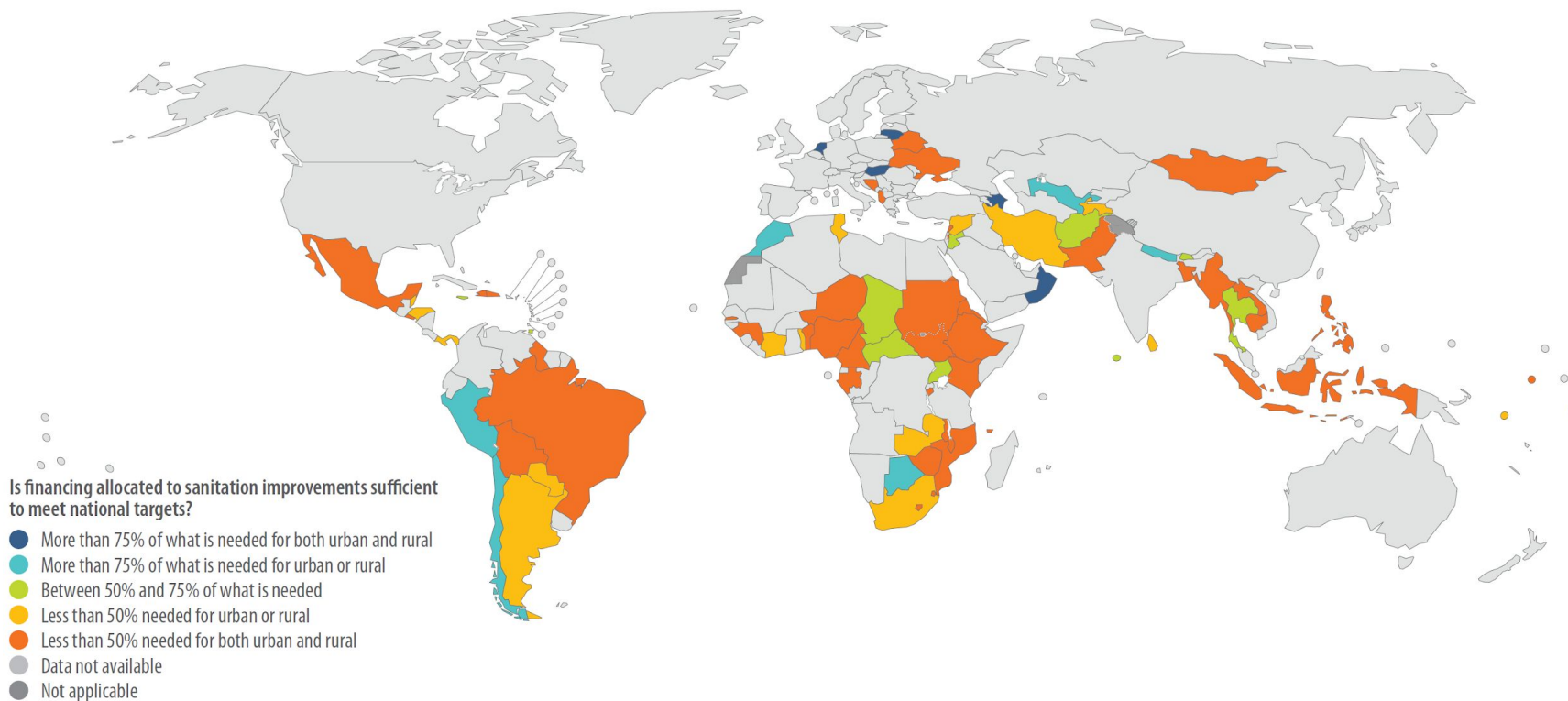
*9<sup>th</sup> World Water Forum  
Dakar, Senegal - 22 March 2022*

# Assessment – How far are we from effectively financing the water and sanitation sector?

*Didier Allely  
World Health Organization*

# Level of sufficiency of financial resources allocated to sanitation to meet national targets

- Less than 15% of countries reported adequate financing to implement national WASH plans



Map production: Water, Sanitation, Hygiene and Health, WHO.  
Source: GLAAS 2018/2019 country survey.

# Level of sufficiency of financial resources allocated to sanitation to meet national targets

Global coverage of WASH services, 2015-2020 (%), and acceleration required to meet targets by 2030

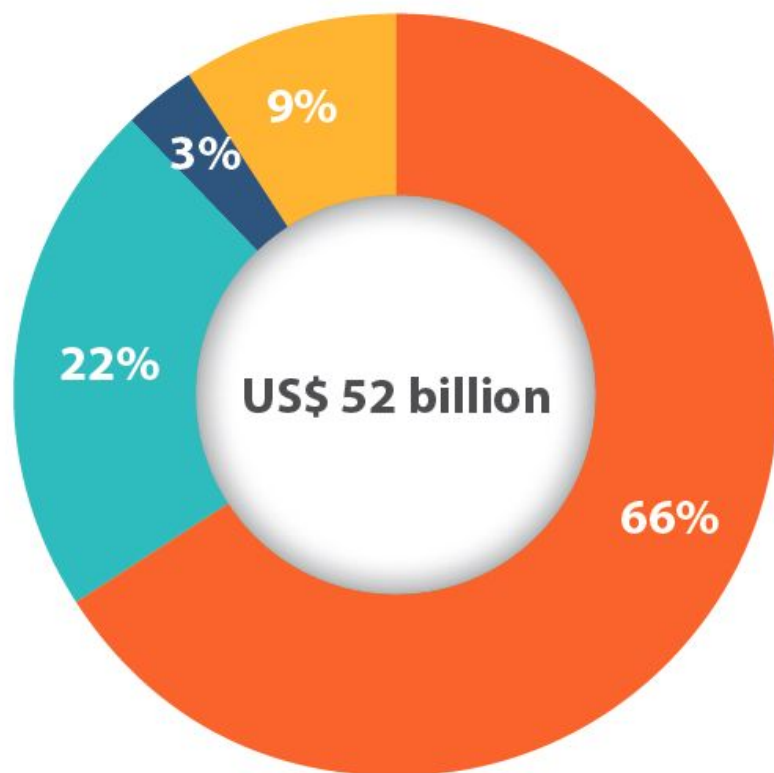


- Less than 15% of countries reported adequate financing to implement national WASH plans
- JMP: Achieving global SDG WASH targets will require an important acceleration / current rates of progress

Source: WHO/UNICEF Joint Monitoring Programme for Water Supply, Sanitation and Hygiene (JMP). Progress on Drinking Water, Sanitation and Hygiene - 2021

# Sources of finance for WASH

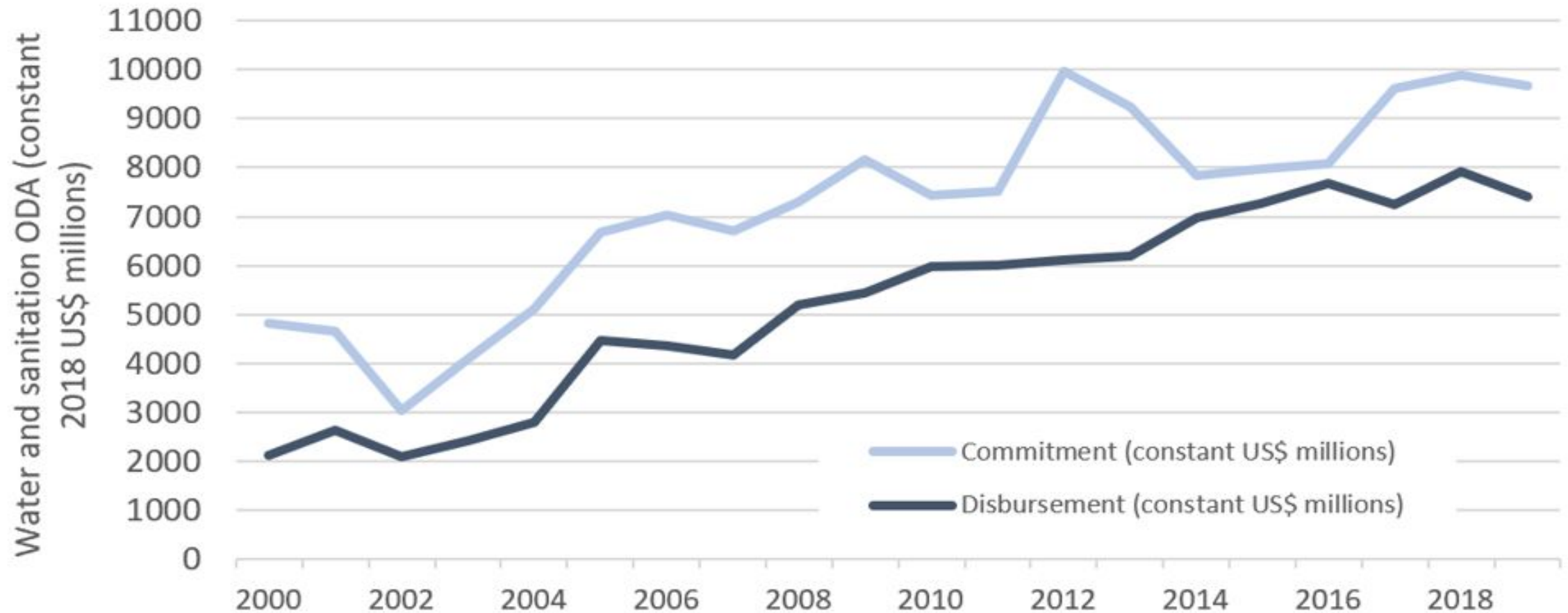
● Households ● Government ● External sources ● Repayable finance



Source: GLAAS 2018/2019 country survey.

- 54 of 115 countries reported some WASH expenditure data.
- 35 countries responding to the GLAAS 2018/2019 country survey were able to categorize WASH expenditures by all revenue sources.
- Household contributions were 66% of WASH expenditures.
- External sources and repayable finance represent 12% of WASH expenditures.

# Total ODA for water and sanitation Commitments and disbursements, 2000-2019



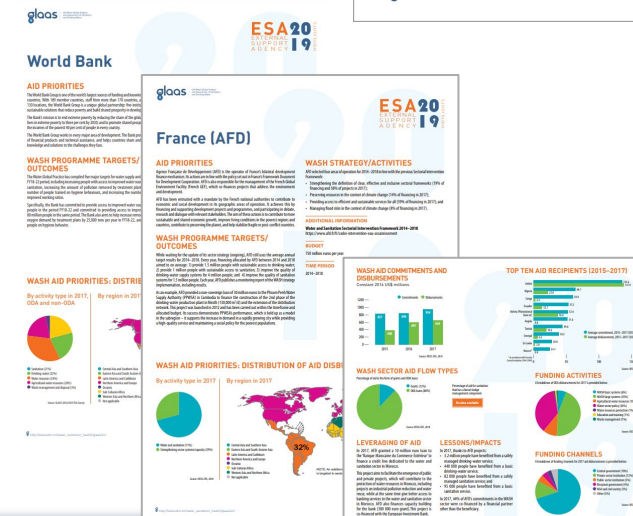
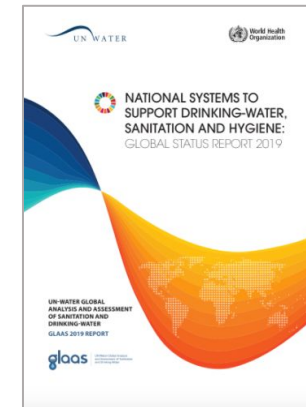
Note : This chart includes both ODA and private grants

Source : OECD-CRS, 2021



# Monitoring finance and the WASH enabling environment

- UN-Water GLAAS provides a global update on WASH systems, including policy frameworks, institutional arrangements, monitoring systems, regulation, human resources and finance through its government-led GLAAS country survey.
- Strong focus on developing WASH Accounts based on TrackFin methodology over the past 10 years that are being conducted in nearly 30 countries:
  - To provide detailed analysis of WASH financial flows and trends in a comparable manner
  - The process of developing WASH accounts is government-led and can be tailored to meet a government's objectives.
- The GLAAS External Support Agency (ESA) Survey:
  - Complements data collected through the GLAAS country survey and OECD-CRS.
  - Topics include aid flows and information on ESA priorities, future planning and alignment, and how aid is being delivered.
  - Focus of the 2022 ESA survey is sanitation and hand hygiene and how particularly international financial institutions fund sanitation.



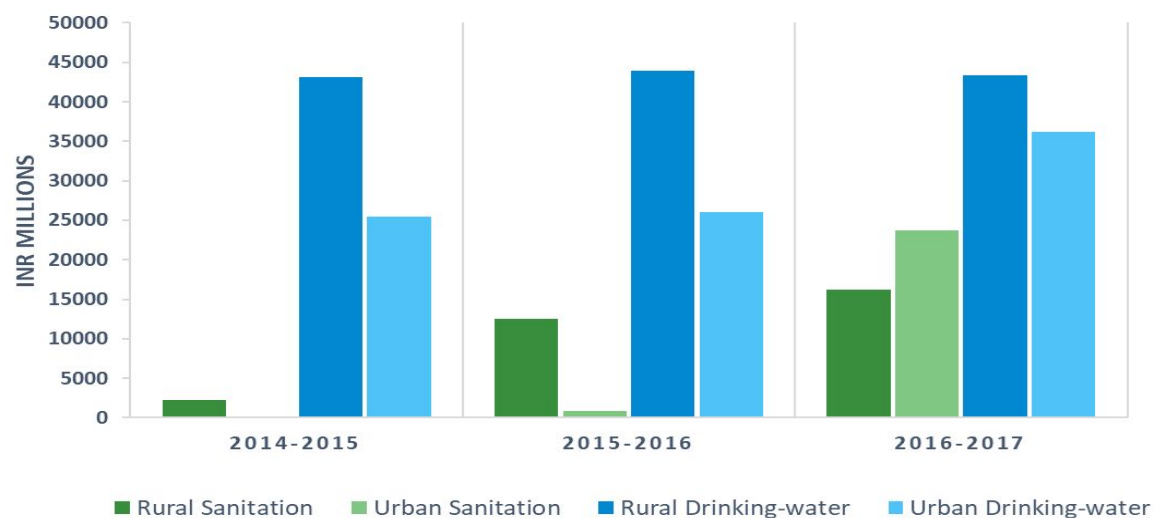
# WASH accounts results and lessons learned

Entities that provide or mobilize funding to the WASH sector	
FU1	Users
FU2	National authorities
FU3	Regional authorities
FU4	Local authorities
FU5	Network corporate providers
FU6	Non-network corporate providers
FU8	Bilateral and multilateral donors
FU9	NGOs and community-based organizations (CBOs)
FU10	Banks and financial institutions
FU.nec	Other

- Better coordination, communication and collaboration among the many WASH actors / contributors, through a harmonized approach;
- Improved availability and quality of WASH financial data by subsectors, by actors, by types of funding and by costs
- Evidence to identify disparities between sub-sectors, by geographical distribution,
- Identification of financial gaps, and
- Stronger positioning to advocate for increased WASH resources

# WASH accounts results

WASH expenditures by sub-sector in Rajasthan, India (2014 – 2017)



- Better coordination, communication and collaboration among the many WASH actors / contributors, through a harmonized approach;
- Improved availability and quality of WASH financial data by subsectors, by actors, by types of funding and by costs
- Evidence to identify disparities between sub-sectors, by geographical distribution,
- Identification of financial gaps, and
- Stronger positioning to advocate for increased WASH resources



# WASH accounts results

## Distribution of WASH expenditure per capita by region Senegal (2016)

WASH expenditure per capita, 2016 (CFA per capita)

- 4918–6032
- 6033–9385
- 9386–13 664
- 13 665–22 487
- 22 488–37967



- Better coordination, communication and collaboration among the many WASH actors / contributors, through a harmonized approach;
- Improved availability and quality of WASH financial data by subsectors, by actors, by types of funding and by costs
- Evidence to identify disparities between sub-sectors, by geographical distribution,
- Identification of financial gaps, and
- Stronger positioning to advocate for increased WASH resources

# WASH accounts results

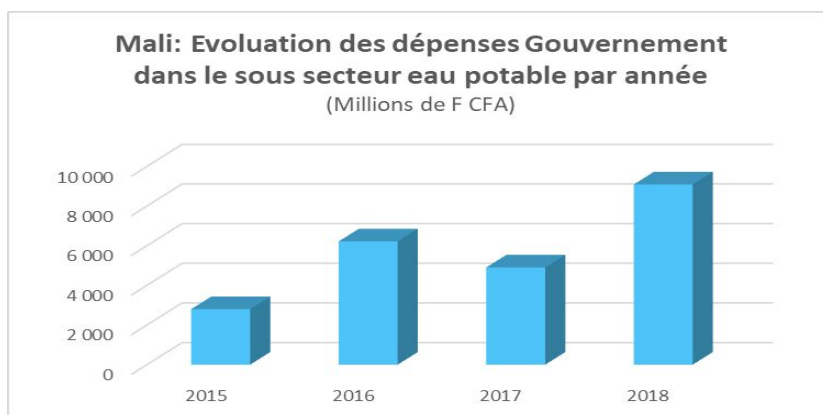
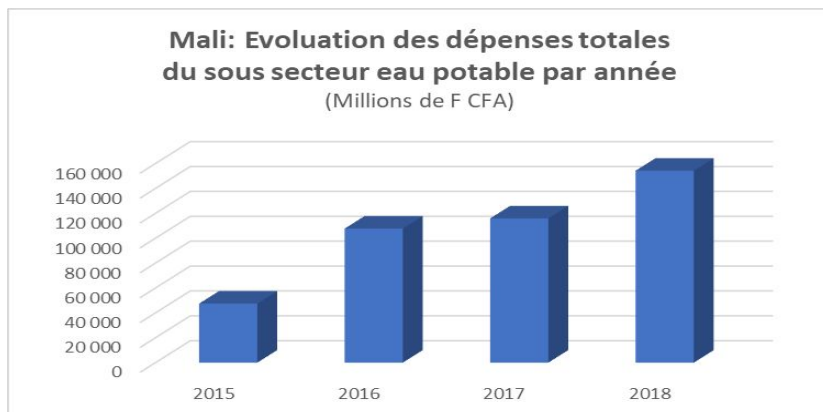
**Burkina Faso : Estimate of funding gap to cover national plans for drinking water and sanitation 2016-2020**

BURKINA FASO Dépenses EAH (Milliards de F CFA) / Programmes	Dépenses publiques période 2016-2020		Cout des programmes Période 2016-2020		Taux de couverture des besoins
	Total sur la période	Moyenne annuelle	Total sur la période	Moyenne	
Services alimentation en eau potable (PNAEP)	246,05	61,51	418,46	83,69	<b>73%</b>
Services d'assainissement (PNAEUE)	70,86	17,72	250,54	50,11	<b>35%</b>
<b>TOTAL</b>	<b>316,91</b>	<b>79,23</b>	<b>669,00</b>	<b>133,80</b>	<b>59%</b>
Dépenses totales en millions US\$	539,22	134,81	1138,30	227,66	

**Source:** Comptes nationaux du secteur eau, hygiène et assainissement de 2016 à 2019. MEA Burkina Faso.

- Better coordination, communication and collaboration among the many WASH actors / contributors, through a harmonized approach;
- Improved availability and quality of WASH financial data by subsectors, by actors, by types of funding and by costs
- Evidence to identify disparities between sub-sectors, by geographical distribution,
- Identification of financial gaps, and
- Stronger positioning to advocate for increased WASH resources

# WASH accounts results



**Source:** Comptes nationaux du secteur eau, hygiène et assainissement 2015 – 2018. CPS-SEEUDE 2020.

- Better coordination, communication and collaboration among WASH actors / contributors
- Improved availability and quality of WASH financial data by subsectors, by actors, by types of funding and by costs
- Evidence to identify disparities between sub-sectors, by geographical distribution,
- Identification of financial gaps, and
- Stronger positioning to advocate for increased WASH resources

# How should we proceed to effectively finance the WASH sector ?

- Detailed and costed plans are absolutely necessary to estimate the need for funding;
- Monitoring of financial flows from all actors is necessary to assess the situation and determine funding gaps;
- Coordination and communication with all contributors, based on data, can facilitate advocacy and mobilization of additional funding.

# GLAAS data portal

- Allows users to interactively explore and download datasets by topic area, visualize key indicators, and search for GLAAS and national documents (such as national WASH policies and plans).
- Automated generation of GLAAS country highlights.
- Initially the data portal will focus on data from GLAAS country surveys from the past three cycles (2013/2014, 2016/2017, 2018/2019).
- Data from external support agency surveys and WASH accounts results to be added progressively over time.
- Check it out at <https://glaas.who.int>.

The screenshot shows the GLAAS data portal website. At the top, the World Health Organization logo is visible. The navigation menu includes Home, Data, Visualizations, Key findings (with a dropdown arrow), and How we work. The main header features the GLAAS logo and the text "UN-WATER GLOBAL ANALYSIS AND ASSESSMENT OF SANITATION AND DRINKING-WATER". Below this, the "Data portal" section is highlighted, with a description: "GLAAS provides policy- and decision-makers at all levels with reliable, easily accessible, comprehensive data on water, sanitation and hygiene (WASH) systems, including on governance, monitoring, human resources and finance. GLAAS monitors elements of WASH systems that are required to sustain and extend WASH services and systems to all, and especially to the most vulnerable population groups."

Key findings in GLAAS areas

View by results area

The results area is divided into six categories, each with a representative image and a label: Governance, Monitoring, Human resources, Finance, Equity, and External aid.

Data visualizations and documents

Two main sections are shown: "Data" (Search, view and export GLAAS datasets and tables) and "Visualizations" (Visualize and export information on specific WASH indicators).

For more information, please see the GLAAS and WASH accounts webpages. For questions, please contact [glaas@who.int](mailto:glaas@who.int).

# Thank you!

*For additional information please contact  
[glaas@who.int](mailto:glaas@who.int)*



UN-Water Global Analysis  
and Assessment of Sanitation  
and Drinking-Water

