

Mainstreaming nature-based solutions for climate adaptation: a new mission for the French Biodiversity Agency

Cyrille Barnérias, head of the Europe and International team



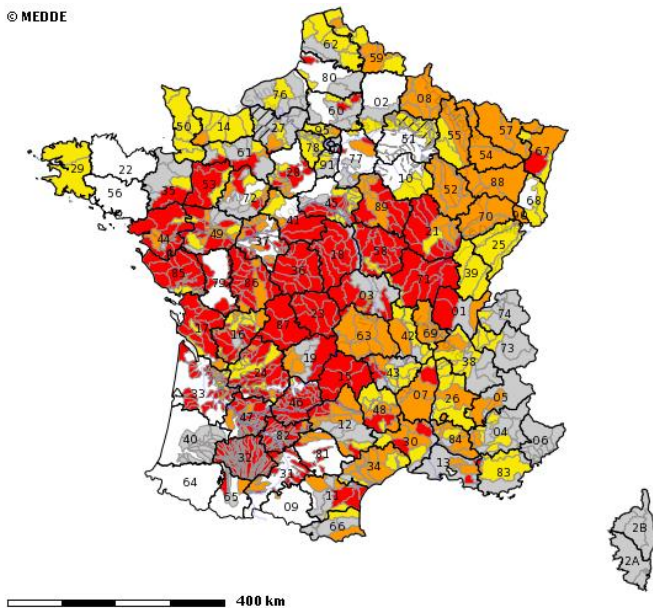
**AGENCE FRANÇAISE
POUR LA BIODIVERSITÉ**
ÉTABLISSEMENT PUBLIC DE L'ÉTAT

Climate change impact in France



Water: a vulnerable sector

© MEDDE



Restriction measures for water – summer 2019



*The Nartuby (South-East of France) flood, 2010 – CC P. Cantet
IRSTEA*

A national framework for climate adaptation



« To foster, wherever possible, nature-based adaptation solutions »



**ARTISAN
project**

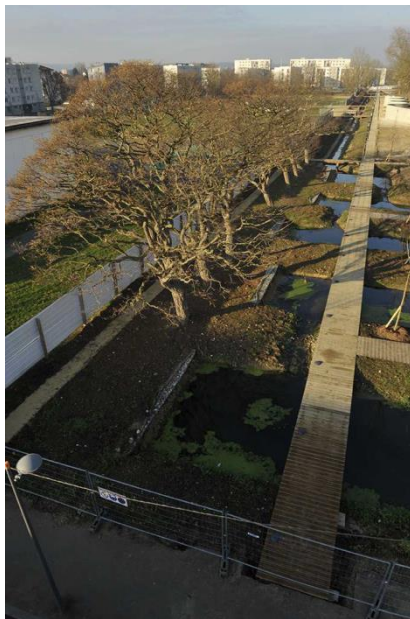
10 pilot projects



Green and blue spaces for better management of urban rainwater



Villeurbanne (Lyon metropolis): rain with no infiltration possibilities – CC Grand Lyon

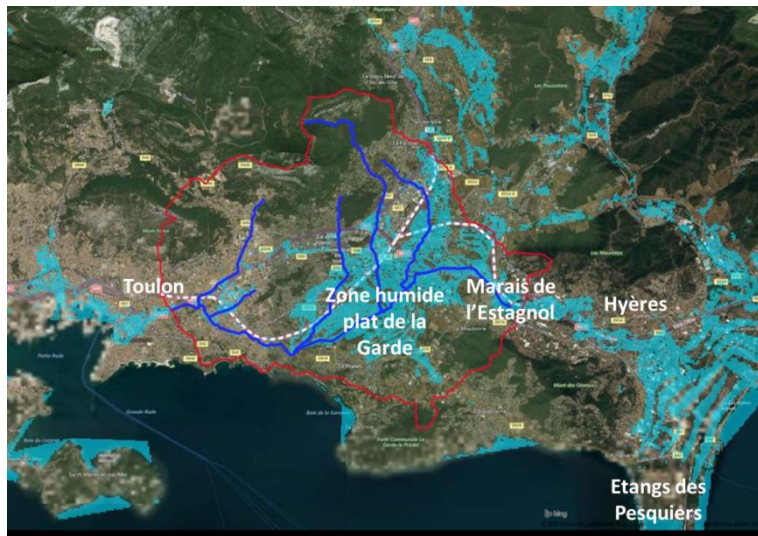


Ru Parc Molière, Les Mureaux – CC Ville des Mureaux

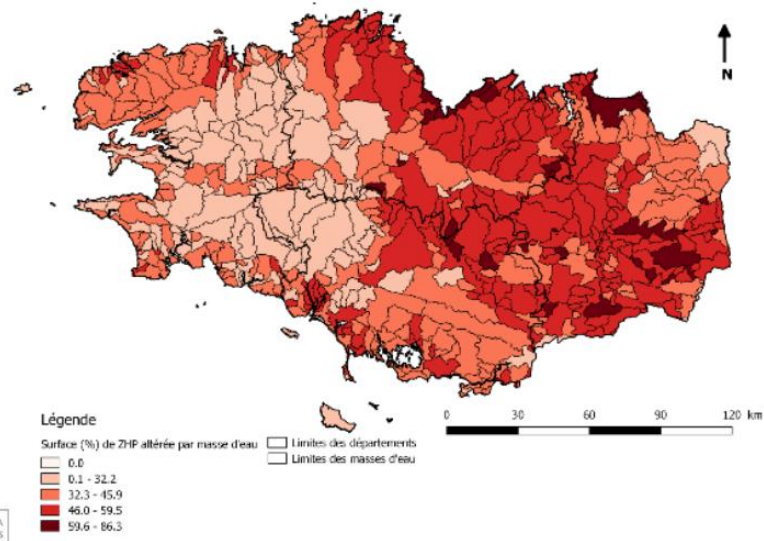


Morthium creek with weed colonisation in Matoury, Guyana

Wetlands for adaptation to floods and droughts

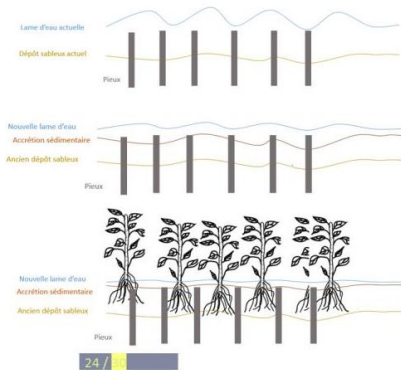


Map of potential wetlands in Estagnol, Var – CC SGE



Alteration of wetlands per water bodies in Brittany– CC Forum des Marais Atlantiques

Mangroves for protection of coastal areas



La pose des pieux engendre la formation d'un « piège à sable »

Le « piège à sable » induit l'accrétion sédimentaire : la lame d'eau est diminuée, la houle est moins forte au-dessus de la pointe.

La mangrove vient s'implanter : la pointe est consolidée, la houle se casse sur cette digue naturelle.





Thank you for your attention