



Session 1F1

**“Rebalancing concrete infrastructures &
nature-based solutions to improve resilience:
when green & grey make blue!”**

Thursday 24th of March, 10.45 am – 12.15 pm (UTC / Dakar time),
Room 1

A session organized by:



INFRASTRUCTURE FOR WATER STORAGE AND NATURE BASED SOLUTION TO PROTECT AND PRESERVE WATER

Dr. Bouraïma KOUANDA
Director General – Mouhoun Water Agency
Burkina Faso – West Africa

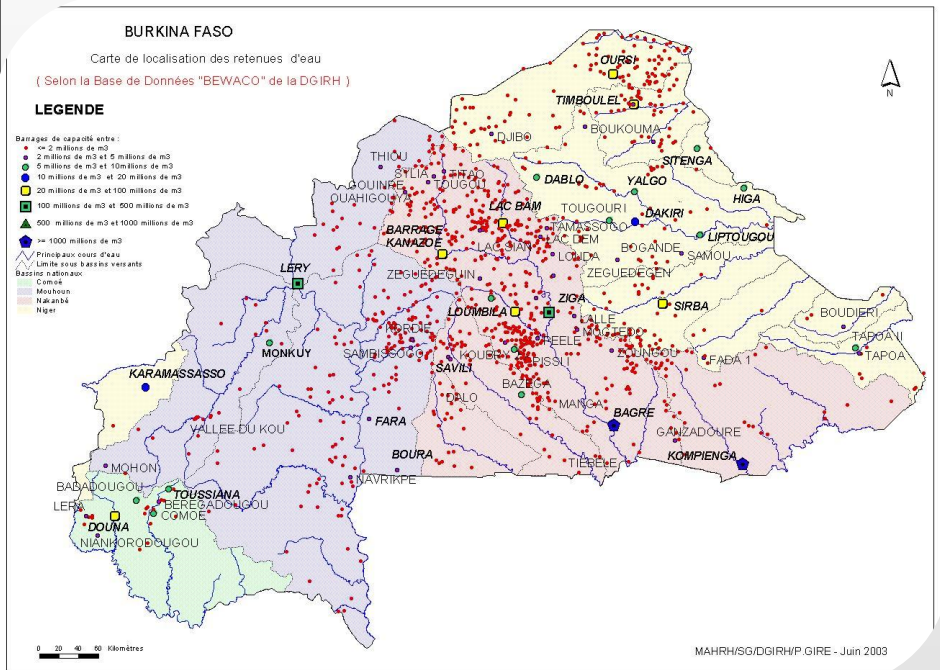


PLAN

- A. **PROJECTS AREA**
- B. **PROTECTION OF RESERVOIR : CASE OF SAMENDENI DAM**
- C. **PROTECTION OF SPRINGS AND WATER CATCHMENT AREA :
CASE OF PALA / BOBO DIOULASSO**
- D. **PROTECTION OF RIVER : CASE OF KOU RIVER**
- E. **PROTECTION OF MOUHOUN RIVER AT BENDOUGOU**



A. PROJECTS AREA



Bagre



Kompienga



Ziga

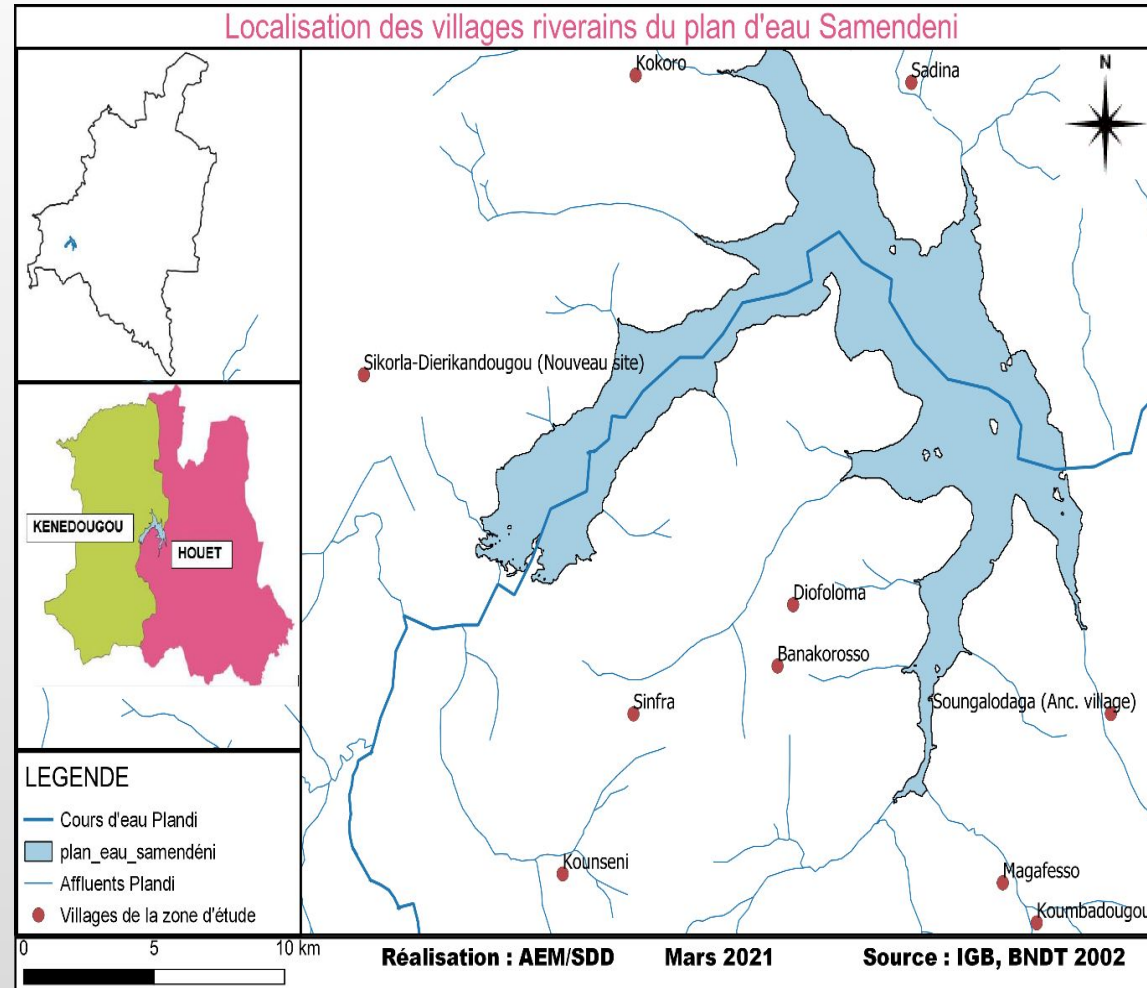
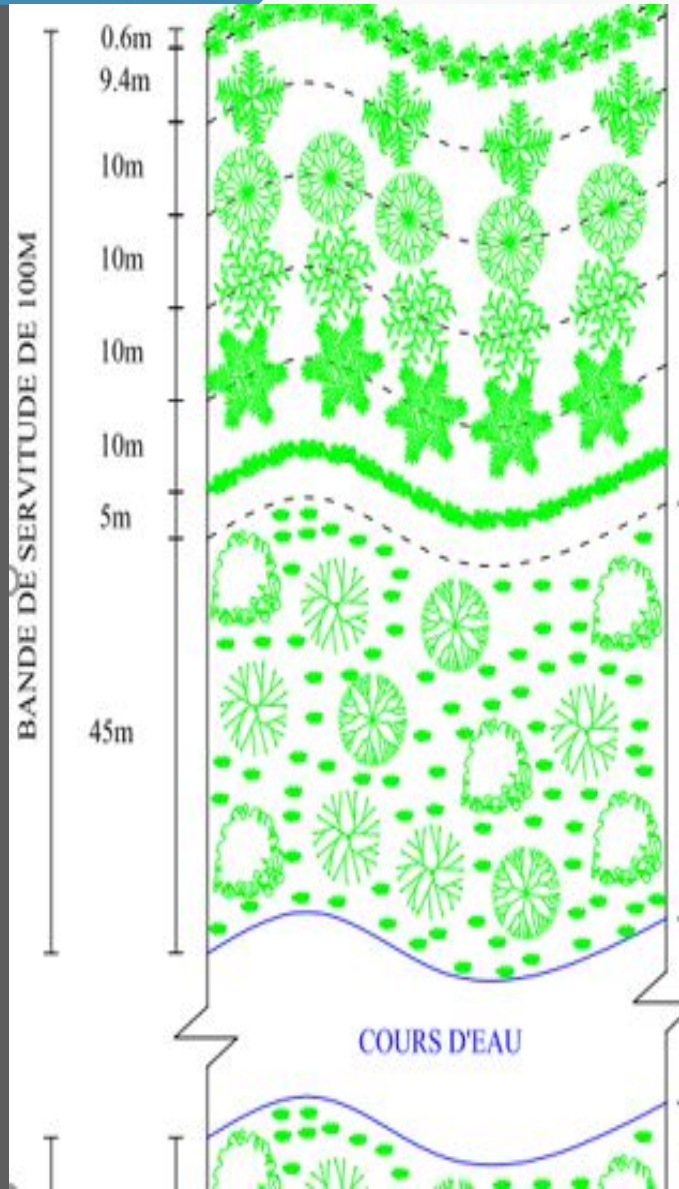


Loumbila

- ❑ **Burkina Faso : Sahelian country in West Africa (WA) with irregular distribution of rainfall (May or June to September) and impacted by C.C.**
- ❑ **Burkina Faso : Country of One Thousand (1000) dams in WA.**
- ❑ **Burkina Faso : Country of IWRN in WA – Implementing NBS to be more resilient...!**



B. PROTECTION OF RESERVOIR : CASE OF SAMENDENI DAM



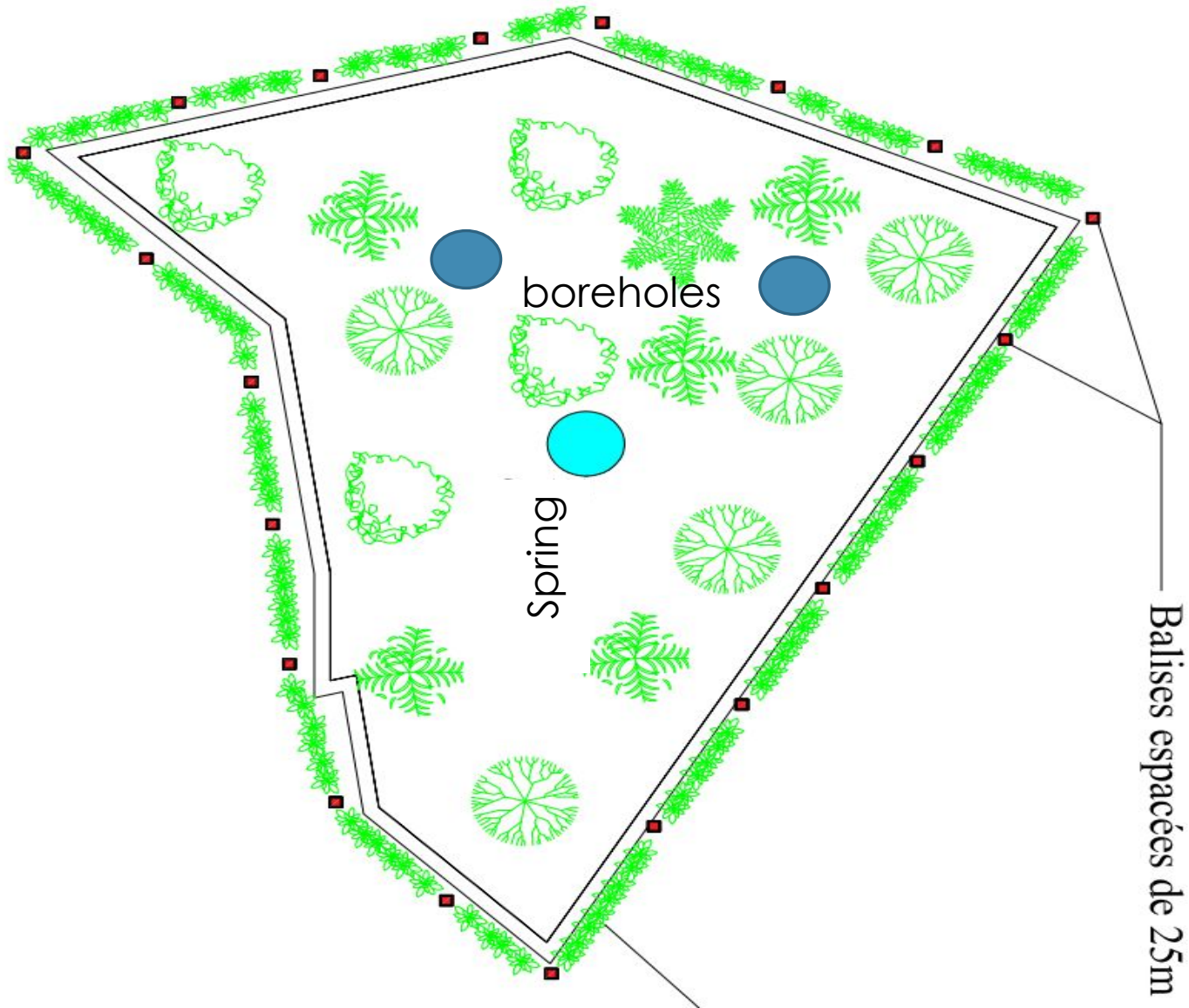
**Agricultural and hydropower
Reservoir of 1.05 billions of m³**

- Community surveys**
- Identification of expectations**
- Draft of action plan**
- Validation of the action plan**
- Implementation with Water Local Community**

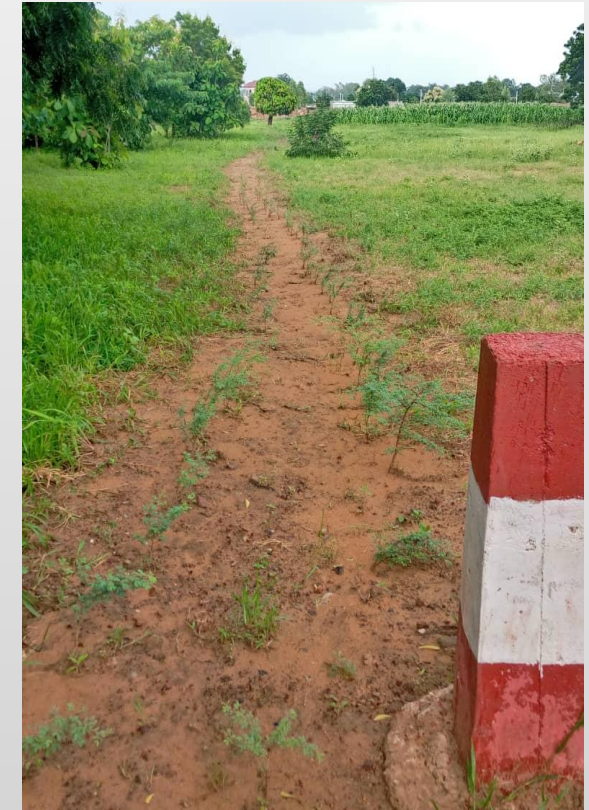
C. PROTECTION OF GROUND WATER : CASE OF WATER CATCHMENT AREA PALA



PLAN D'AMENAGEMENT DE LA SOURCE DE PALA



- Two deep boreholes with high debit to deserve Bobo Dioulasso City.
- Catchment area is to be protected





- Banks are used intensively for agriculture
- Intensive increase of sedimentation
- Decrease of discharge
- lack of water for irrigation in downstream (regular farmer)

Kou river is fed by the most important springs in Burkina Faso and so important for socio economic development ...!



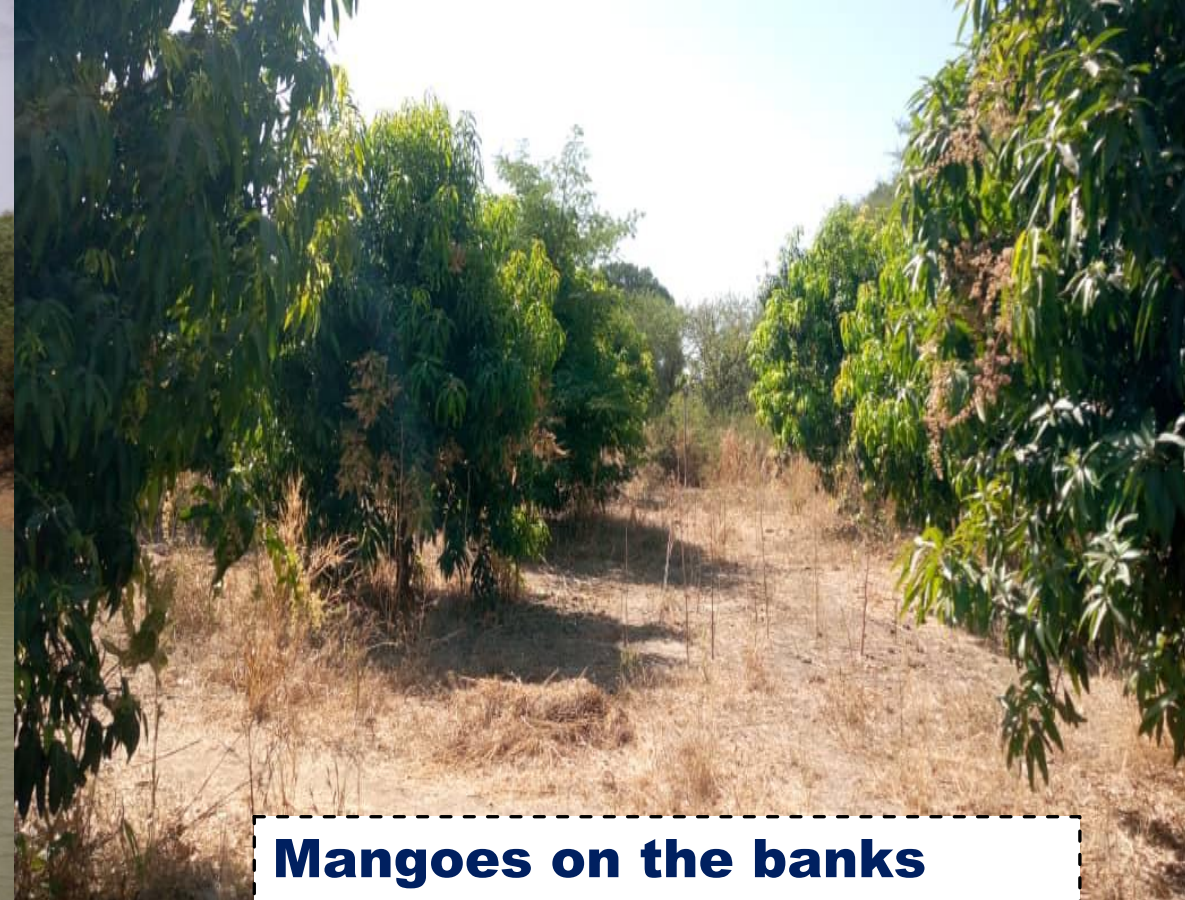
- Sands bag
- Herbaceous planted on sands bags

Save the Kou River by protecting the banks. Activities led by the Local Water Comity

E. CASE OF MOUHOUN RIVER AT BENDOUGOU



**Mouhoun river with riparian forest –
The most important River in Burkina
Faso, shared with others countries**



**Mangoes on the banks
after the riparian forest – a
source of revenue for the
local community**



KEYS WORDS :

- ❑ **Rivers and reservoirs are threatened by human and climate despite their importance for our life!**
- ❑ **When we change the **environment**, the **environment** will change **both** the **climate** and our **life**, the changing **climate** will also change **both** the **environment** and our **life**. Let's change the **environment** in the best way, and we will change the **both climate** and our **life** on the best way. The NBS can hopefully help to go ahead...!**

THANKS :

