

The Danube



5th International
Yellow River Forum
第五届黄河国际论坛
ZHENG ZHOU • CHINA : SEPT 24-28, 2012



icpdr ikd

International
Commission
for the Protection
of the Danube River

Internationale
Kommission
zum Schutz
der Donau

The Challenges of Multilateral Cooperation in River Basin Management



ICPDR
Head of Hungarian Delegation
Péter Kovács

Zhengzhou, September 24-28, 2012



The Danube is diverse – ecologically, socially, politically

icpdr iksd

International
Commission
for the Protection
of the Danube River

Internationale
Kommission
zum Schutz
der Donau

Most international River Basin in the World, 19 Countries, 81 M inh.





Human activities damaged the Danube





Danube River Protection Convention



29 June 1994
Sofia - Bulgaria

- Protection of water / ecological resources
- Sustainable use of water in Danube River Basin
- Reduce inputs of nutrients and hazardous substances

**ICPDR coordinates implementation of
EU Water Framework Directive**



Contracting Parties



Germany



Austria



Czech Republic



Slovakia



Hungary



Slovenia



Croatia



Bosnia & Herzegovina



Serbia



Montenegro



Romania



Bulgaria



Rep. of Moldova



Ukraine



European Union



ICPDR Delegations of Contracting Parties

ICPDR
Secretariat

IMGIS
EG

ad hoc
S EG

PP EG

RBM EG

Flood EG

PM EG

MA EG

APC EG

+ Task
Groups

Information
Management &
Geographical
Information
System

Public
Participation

Flood
Protection

Monitoring &
Assessment

Accident
Prevention/Control

Pressures &
Measures

ad hoc Strategic

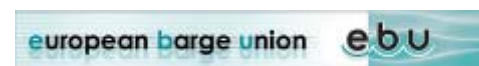
River Basin
Management

Stakeholder Involvement: 22 Observers

icpdr iksd

International
Commission
for the Protection
of the Danube River
Internationale
Kommission
zum Schutz
der Donau

viadonau

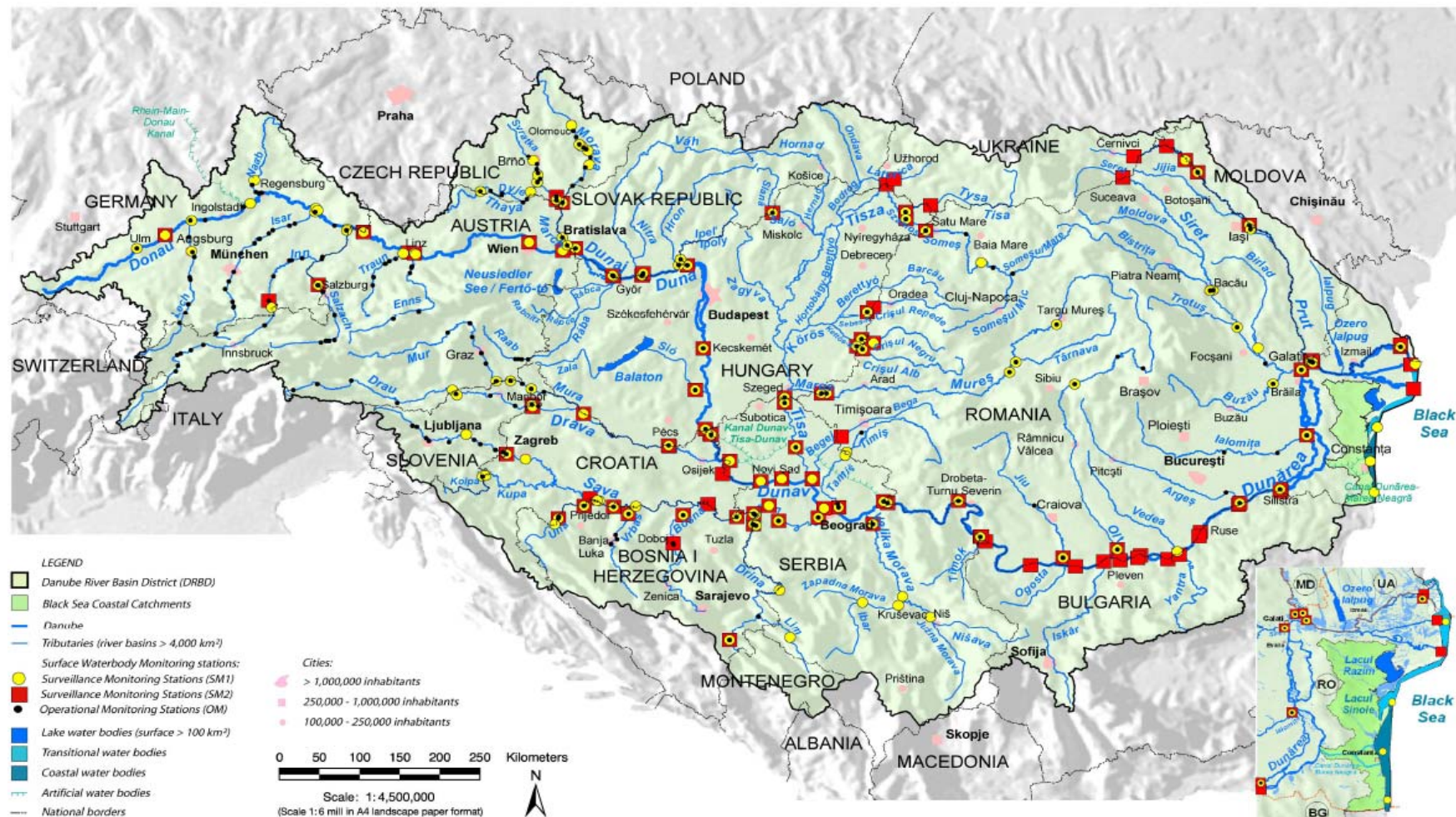


TransNational Monitoring Network (TNMN)

icpdr iksd

International
Commission
for the Protection
of the Danube River

Internationale
Kommission
zum Schutz
der Donau





Significant Water Management Issues



Organic
Pollution



Nutrient
Pollution



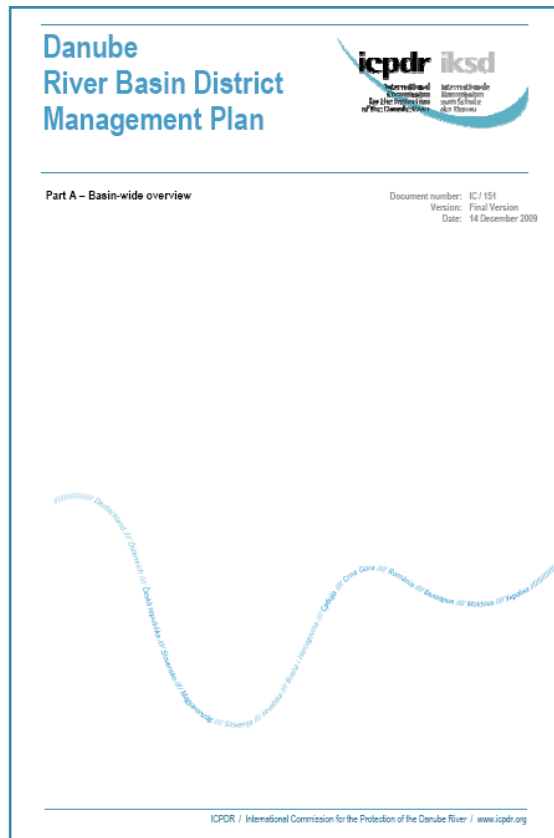
Hazardous
Substances Pollution



Hydromorphological
Alterations



Danube River Basin Management Plan



Reflects

- Water status of the DRB waters
- Significant Water Management Issues

Includes

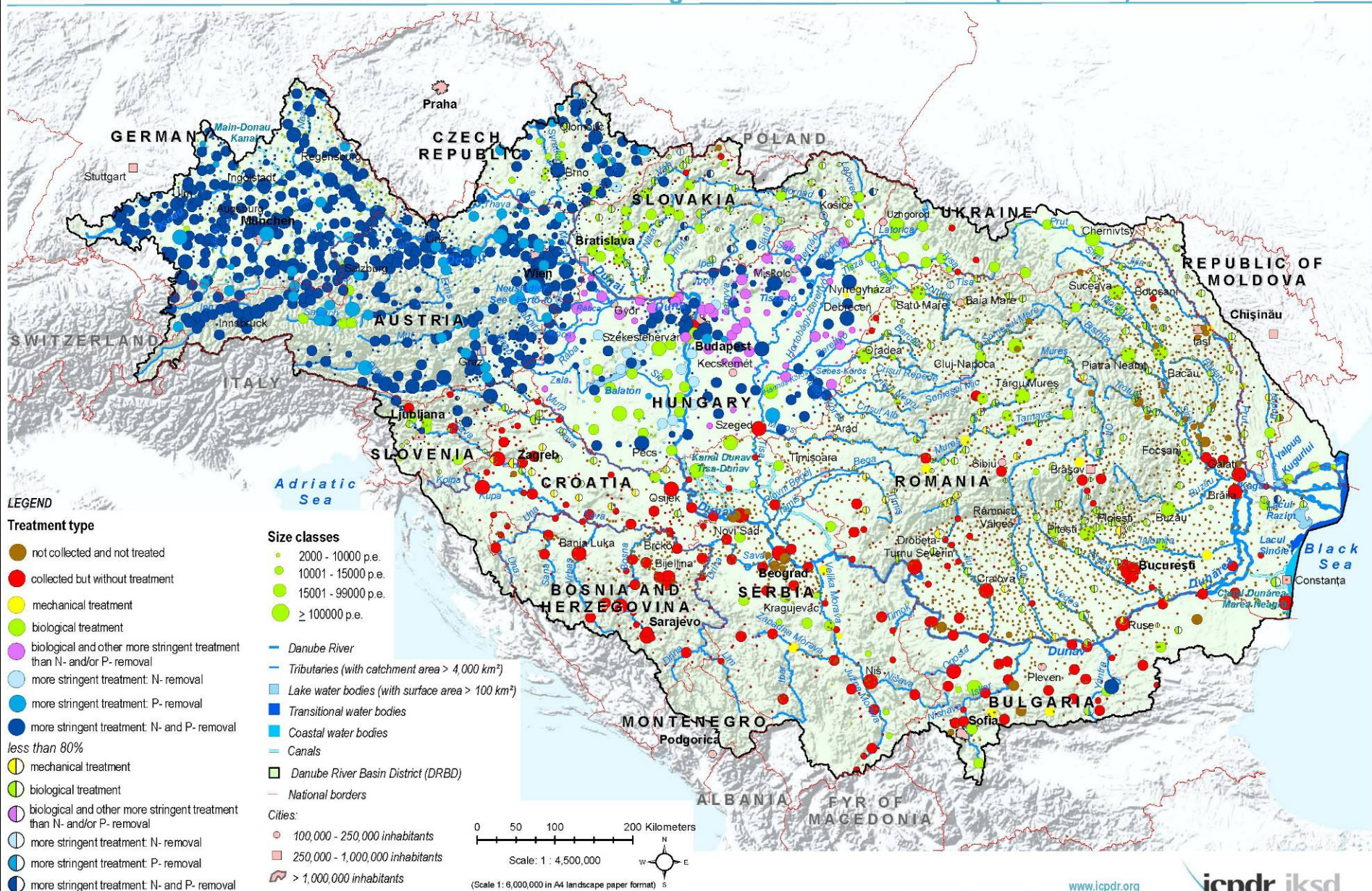
- Joint Programme of Measures
- Evaluation on measure implementation

Enables

- Conclusions on investment & funding



Danube River Basin District : Urban Wastewater Discharges – Reference Situation - (RS-UWWT)



This ICPDR product is based on national information provided by the Contracting Parties to the ICPDR (AT, BA, BG, CZ, DE, HR, HU, MD, RO, RS, SI, SK, UA) and CH, except for the following: EuroGlobalMap v2.1 from EuroGeographics was used for national borders of AT, CZ, DE, HR, HU, MD, RO, SI, SK and UA; ESRI datasets were used for AL, ME, MK; Shuttle Radar Topography Mission (SRTM) from USGS Seamless Data Distribution System was used as topographic layer; data from the European Commission (Joint Research Center) was used for the outer border of the DRBD of AL, IT, ME and PL.

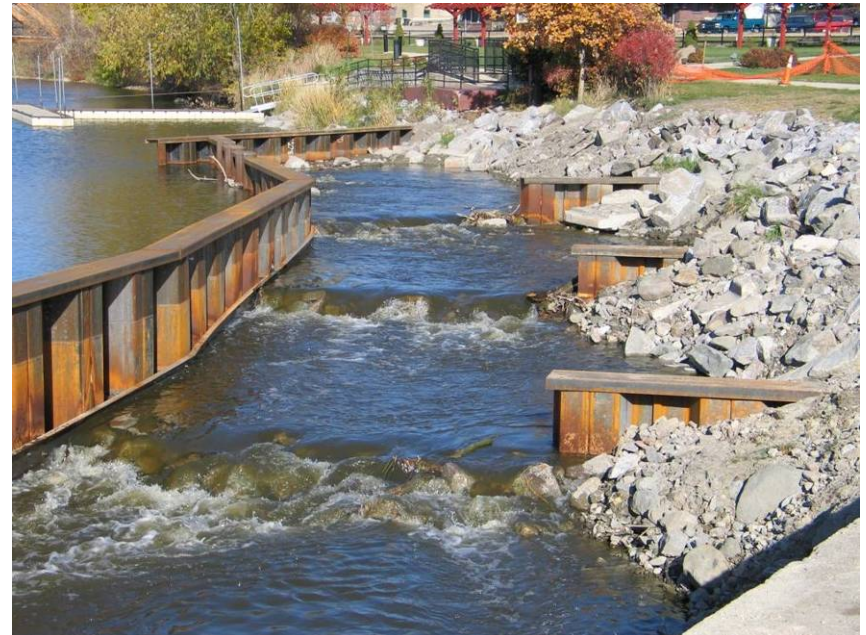


Connectivity & Fish Migration

icpdr iksd

International
Commission
for the Protection
of the Danube River

Internationale
Kommission
zum Schutz
der Donau



Source: www.biotactic.com





Ministerial Meeting February 16, 2010

icpdr iksd

International
Commission
for the Protection
of the Danube River

Internationale
Kommission
zum Schutz
der Donau



ICPDR MINISTERIAL MEETING
**DANUBE BASIN:
SHARED WATERS -
JOINT RESPONSIBILITIES**
VIENNA, 16 FEBRUARY 2010

icpdr iksd
International
Commission
for the Protection
of the Danube River

Internationale
Kommission
zum Schutz
der Donau

Inter-sectoral effort needed:
Governments alone do not manage water resources

Joint Statement on Navigation

icpdr iksd
International
Commission
for the Protection
of the Danube River
Internationale
Kommission
zum Schutz
der Donau

icpdr iksd
International
Commission
for the Protection
of the Danube River
Internationale
Kommission
zum Schutz
der Donau



icpdr iksd
International
Commission
for the Protection
of the Danube River
Internationale
Kommission
zum Schutz
der Donau

Development of Inland Navigation and Environmental Protection in the Danube River Basin

Joint Statement on Guiding Principles

Inland navigation can contribute to making transport more environmentally sustainable, particularly where it substitutes for road transport. It can, however, also have significant influence on river ecosystems, jeopardizing the goals of the EU Water Framework Directive, which aims for the "good ecological status" of all waters by 2015. Recognising this potential conflict in a number of new waterway projects along the Danube and the Sava river, the International Commission for the Protection of the Danube River (ICPDR) has linked up with the Danube Navigation Commission, and the International Sava River Basin Commission to conduct in 2007 an intense, cross-sectoral discussion process. As a result of 3 interdisciplinary workshops, a "Joint Statement on Guiding Principles on the Development of Inland Navigation and Environmental Protection in the Danube River Basin" was agreed. The final document was adopted in December 2007/January 2008 by the ICPDR, the Danube Commission and by the International Sava River Basin Commission. The "Joint Statement" is a guiding document for the maintenance of existing waterways and the development of future waterway infrastructure. It is perceived as a milestone that leads to the integration of ecology into waterway development.

Deutschland // Österreich // Česká republika // Slovensko // Rumunien // Serbien // Bosnien und Herzegowina // Kroatien // Montenegro // Albanien // Bulgarien // Ungarn // Polen // Tschechien // Slowakei // Österreich // Deutschland



Business...

- ... is a stakeholder in water management
(affects water through actions or lack thereof)
- ... can act as an innovator & leader
- ... can be a partner in projects





Business Friends of the Danube



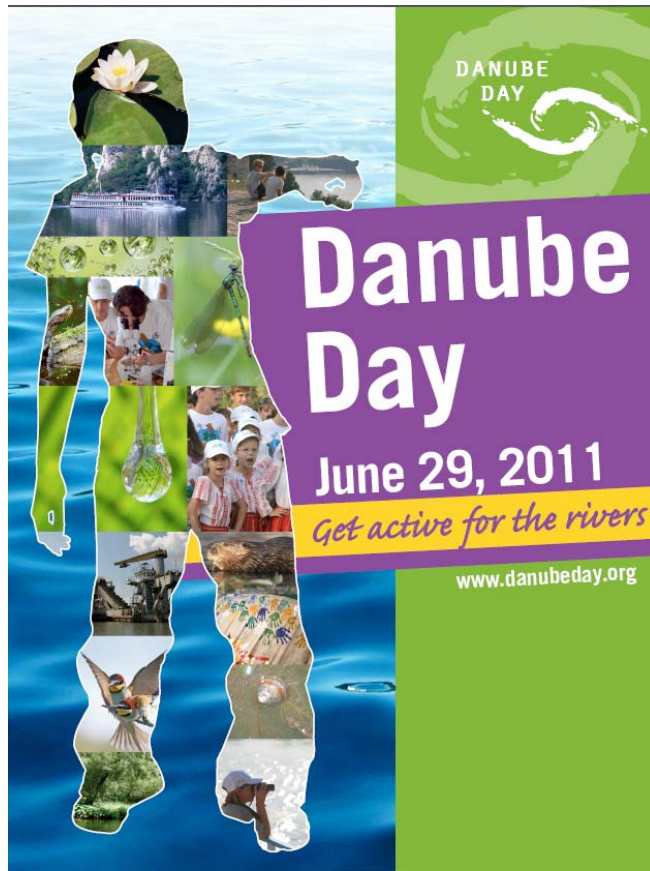
- Promote best practice in environmental management
- Implement projects supporting Danube countries
- Operate in the Danube basin
- Share the vision of the ICPDR





Danube Day: June 29

icpdr iksd
International
Commission
for the Protection
of the Danube River
Internationale
Kommission
zum Schutz
der Donau



Promoting Danube solidarity

DANUBE
DAY





International Thiess Riverprize



In 2007 the ICPDR was awarded the prestigious International Riverprize for excellent water resource management!

September 2007, Brisbane, Australia

European Riverprize

icpdr ikscd

International
Commission
for the Protection
of the Danube River

Internationale
Kommission
zum Schutz
der Donau



Vienna

12th of September
2013

Riverprize
IRF EUROPEAN

Partner Organisations



Restoring Europe's Rivers



www.riverfoundation.org.au

Thank you!

icpdr iksd

International
Commission
for the Protection
of the Danube River

Internationale
Kommission
zum Schutz
der Donau

The screenshot shows the ICPDR website interface. On the left, there are two main navigation menus. The first menu, titled 'Danube Basin', includes links for 'RIVER BASIN', 'COUNTRIES', and 'BLACK SEA'. The second menu, titled 'Issues', includes links for 'ECOSYSTEMS', 'WATER QUALITY', 'WATER POLLUTION', 'GROUNDWATER', 'FLOODS & DROUGHTS', 'DAMS & STRUCTURES', and 'RIVER BASIN MANAGEMENT'. To the right of these is a 'Sectors' menu with links for 'HUMAN IMPACTS', 'MUNICIPALITIES', 'INDUSTRY', 'AGRICULTURE', 'NAVIGATION', and 'NATURE PROTECTION'. Below the 'Sectors' menu is a search bar. The main content area features a 'Danube Day' banner with images of people and a river. Below the banner is a 'Welcome to ICPDR website!' message from Mr. Wolfgang Stalzer, ICPDR President 2012. To the right of the welcome message is a 'DANUBE WATCH 3-4/2011' section with a 'MORE' link. Below the welcome message is a 'CZECH VERSION OF THE PLATINA MANUAL PUBLISHED' section with a 'MORE' link. To the right of the Czech manual section is an 'INLAND WATERWAYS COMES TOGETHER TO ADDRESS DIFFERENCES' section with a 'MORE' link. The website has a light blue background with a map of the Danube basin and decorative green leaves.

icpdr iksd
International Commission for the Protection of the Danube River
Internationale Kommission zum Schutz der Donau

Danube Day

Welcome to ICPDR website!

We hope that this website inspires anyone wishing to know more about the environmental issues affecting the Danube river basin. And that it is a good source for everyone interested in ensuring the sustainable development of the most international river basin in the world.

Mr. Wolfgang Stalzer
ICPDR President 2012

AUSTRIA TAKES OVER ICPDR PRESIDENCY

In the framework of a ceremony held in Vienna today, Austria took over the presidency of the International Commission for the Protection of the Danube River (ICPDR). The former President, Mykola Malenewskyi of Ukraine, passes his office on to Wolfgang Stalzer of Austria.

DANUBE WATCH 3-4/2011

The new issue of the Danube Watch is out. Click here to read the full magazine online!

CZECH VERSION OF THE PLATINA MANUAL PUBLISHED

The recent publication of a Czech version of the PLATINA Manual is a major step in promoting good practices in inland navigation and waterway planning. The translated manual was...

INLAND WATERWAYS COMES TOGETHER TO ADDRESS DIFFERENCES

A groundbreaking conference in Brussels has seen two traditionally opposing waterways groups come together to discuss how to co-operate for the benefit of Europe's rivers and canals.

Further information: www.icpdr.org