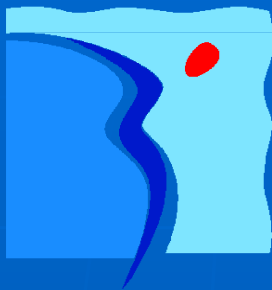




**International
Office
For Water
PARIS-FRANCE**



**International
Network
Of Basin
Organizations**

Office International de l'Eau

International Office for Water

Oficina Internacional del Agua

Международное бюро по водным ресурсам

المكتب الدولي للمياه

水资源国际办公室





International
Office
For Water
PARIS-FRANCE



International
Network
Of Basin
Organizations



流域组织国际网

RESEAU INTERNATIONAL DES ORGANISMES DE BASSIN

INTERNATIONAL NETWORK OF BASIN ORGANIZATIONS

RED INTERNACIONAL DE ORGANISMOS DE CUENCA

Международная сеть водохозяйственных организаций

الشبكة الدولية لهيئات الأحواض



International
Office
For Water
PARIS-FRANCE



International
Network
Of Basin
Organizations



Zaragoza, “Water Tribune”
09 de julio de 2008

Mr. Jean - François DONZIER
General Manager
International Office for Water
Permanent Technical Secretary

INTERNATIONAL NETWORK OF BASIN ORGANIZATIONS



International
Office
For Water
PARIS-FRANCE

INBO General Objective: **To Organized better IWRM** **at basin level!**



International
Network
Of Basin
Organizations





International
Office
For Water
PARIS-FRANCE

INBO ACTION PLAN



International
Network
Of Basin
Organizations

INBO OBJECTIVES ARE:

- to develop relations between organizations interested in comprehensive water resource management at the river basin level,
- to favor exchanges of experiences and expertise among them,
- to promote the principles and means of sound water management in cooperation programs,
- to facilitate the implementation of suitable tools for institutional and financial management, programming, organization of data banks, and for models adapted to the needs,
- to promote information and training programs for the different stakeholders involved in water management as well as for the executives and staff of the member basin organizations,
- to evaluate ongoing actions and disseminate their results.



International
Office
For Water
PARIS-FRANCE

International Network of Basin Organisations, MEMBERS:



International
Network
Of Basin
Organizations

- **“Basin Organizations”**, entrusted by relevant public administrations with integrated water resources management at the level of important river basins, either national, federal or transboundary, as well as the cooperation structures they have developed among them.
- **the governmental administrations in charge** or interested in applying integrated and sustainable water resources management:
 - organized at the level of river basins,
 - associating administrations and local authorities, as well as users,
 - having specific budgetary resources at their disposal, obtained by applying the “user-polluter-pays” principle.
- **bi and multilateral co-operation agencies** supporting activities related to integrated and sustainable water resources management at the level of river basins.



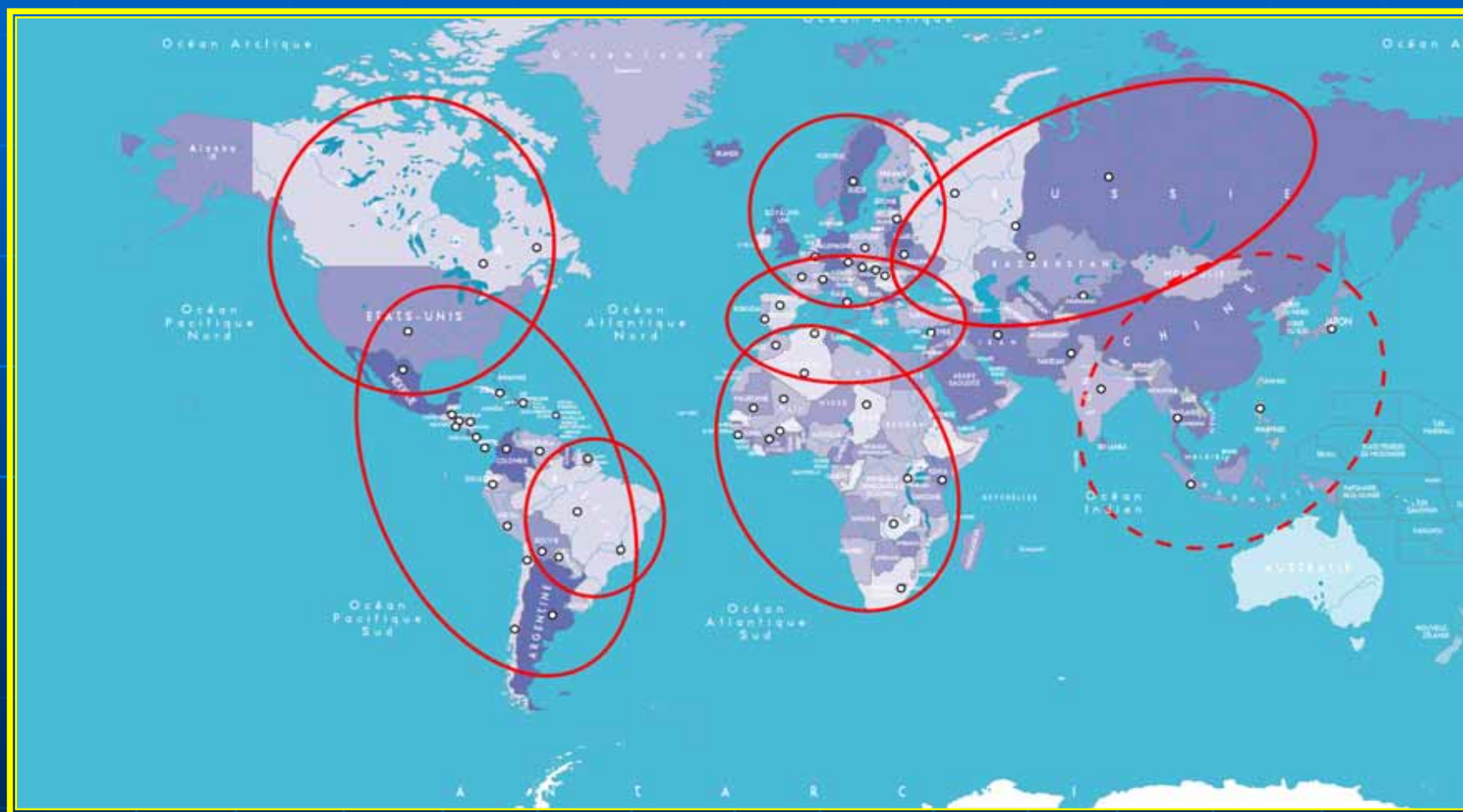
**International
Office
For Water
PARIS-FRANCE**

International Network of Basin Organisations:

185 FULL MEMBERS or PERMANENT OBSERVERS
in 68 COUNTRIES!



**International
Network
Of Basin
Organizations**



Permanent Technical Secretariat operated by International Office for Water, PARIS



International
Office
For Water
PARIS-FRANCE



International
Network
Of Basin
Organizations

5th World Water Forum ISTANBUL 2009

5th WORLD WATER FORUM
ISTANBUL 2009



BRIDGING
DIVIDES
FOR WATER



**INBO and UNESCO were designated jointly
for the preparation, animation and coordination of topic 3.1:
"Basin Management and Transboundary Cooperation".**



International
Office
For Water
PARIS-FRANCE

4 questions were selected:



International
Network
Of Basin
Organizations

**What are the
success and
failures stories
of hydro
solidarity and
IWRM at basin
level?**

**How to organize
and enable
stakeholders
participation ?**

*How can
transboundary water
resources be
managed more
sustainably by all the
riparian countries
concerned?*

*What are the tools to
be used for better
basin management
and transboundary
cooperation over
surface and ground
water ?*

5th WORLD WATER FORUM
ISTANBUL 2009



BRIDGING
DIVIDES
FOR WATER





**International
Office
For Water
PARIS-FRANCE**



**International
Network
Of Basin
Organizations**



**International events are still planned in 2008
to prepare and promote the World Forum on this topic:**

- **in Solo, Indonesia, in February, with NARBO GM,**
- **in Tunis, Tunisia, in March, during the African Water Week,**
- **in Moscow, Russia, in June,**
- **in Saragossa, Spain, in July,**
- **in Montpellier, France, and Budapest, Hungary, in September,**
- **in Romania and in Japan in October,**
- **in Brazil in November...**

Please add your own events on the agenda.



International
Office
For Water
PARIS-FRANCE

Global Water
Partnership



International
Network
Of Basin
Organizations

***Joint GWP-INBO Handbook:
“How to apply IWRM approaches
at river, lake and aquifer basin levels”***





**International
Office
For Water
PARIS-FRANCE**

water resources management should be organized:



**International
Network
Of Basin
Organizations**

- 1) on the scale of local, national or transboundary basins of rivers, lakes and aquifers;**
- 2) based on integrated information systems, allowing knowledge on resources and their uses, polluting pressures, ecosystems and their functioning, the follow-up of their evolutions and risk assessment.**
- 3) based on management plans or master plans that define the medium and long-term objectives to be achieved;**



**International
Office
For Water
PARIS-FRANCE**

water resources management should be organized:



**International
Network
Of Basin
Organizations**

- 4) through the development of Programs of Measures and multiyear priority investments;**
- 5) with the mobilization of specific financial resources,
based on the « polluter-pays » principle and « user-pays » systems;**
- 6) with the participation in decision-making of the concerned Governmental Administrations
and local Authorities, the representatives of different categories of users
and associations for environmental protection or of public interest.**



International
Office
For Water
PARIS-FRANCE



International
Network
Of Basin
Organizations

Implementation of
the European Water Framework Directive
in the 27 countries
of the enlarged European Union,
as well as in the candidate countries for accession,
is a major milestone for promoting the principles
of good governance advocated by INBO.
This theme is a priority for mobilizing its members,
not only in Europe
but also in all other interested countries.

Directive 2000/60/EC of 23 October 2000
establishing a framework for the Community action in the field of water policy.



International
Office
For Water
PARIS-FRANCE



International
Network
Of Basin
Organizations

Implementation of
the UN Convention
for the international water courses management
in Europe
is also a major milestone for promoting the
principles of good governance advocated by
INBO.





International
Office
For Water
PARIS-FRANCE



International
Network
Of Basin
Organizations

**Indeed, basins are the natural territories,
in which water runs,
on the soil or in the sub-soil,
whatever are the national or administrative boundaries
or limits crossed.**



**An overall approach should be organized
on the relevant scale
of basin areas of rivers, lakes and aquifers,**



International
Office
For Water
PARIS-FRANCE

« UPSTREAM-DOWNSTREAM » COMMON CAUSE ON THE SCALE OF BASINS AND SUB-BASINS



International
Network
Of Basin
Organizations

Sub-basin/Sector/
Water type
element of district to deal
with particular aspects

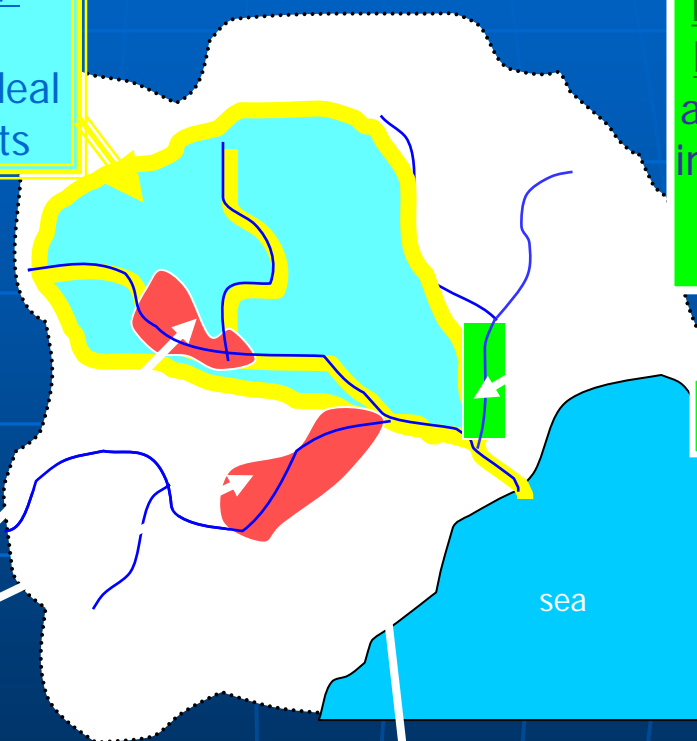
THE DIFFERENT HYDROLOGICAL SCALES:

Water bodies
scale of evaluation
of the achievement
of the objectives

District =
river basins + associated
groundwaters and coastal waters

Heavily modified water
bodies (HMWB): human
activity carried out makes it
impossible to reach the goal
without disproportionate
costs (change activity...)

⇒ no link with pollution





International
Office
For Water
PARIS-FRANCE

TWO HUNDRED AND SIXTY THREE RIVERS OR LAKES AND HUNDREDS OF AQUIFERS ARE TRANSBOUNDARY ONES



International
Network
Of Basin
Organizations



Transboundary basins per continent.

		2002	<i>Pourcentage du territoire</i>
<i>Afrique</i>		59	62 %
<i>Asie</i>		57	39 %
<i>Europe</i>		69	54 %
<i>Amerique du Nord</i>		40	35 %
<i>Amerique du Sud</i>		38	60 %
<i>TOTAL</i>		263	45 %



International
Office
For Water
PARIS-FRANCE

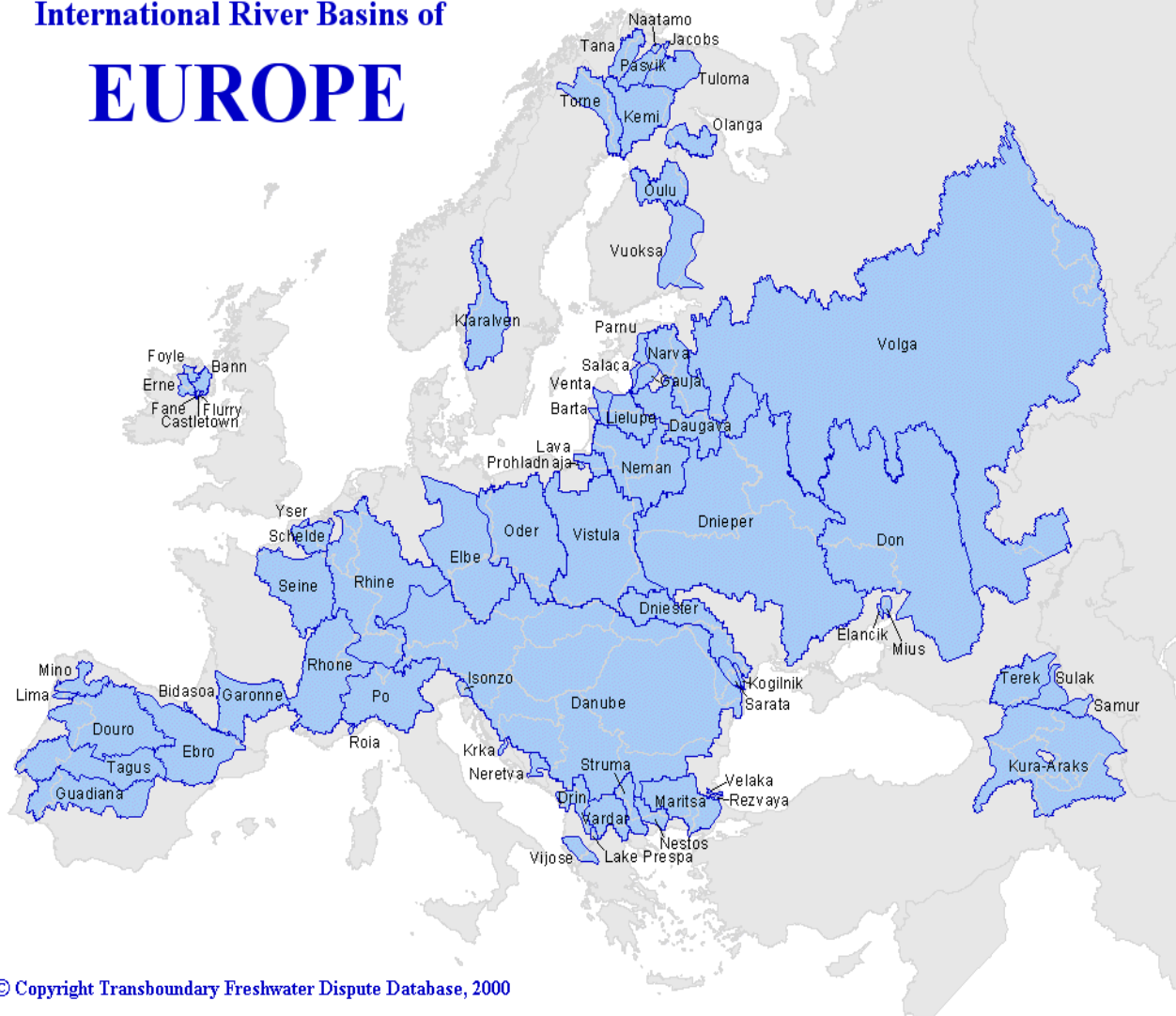
In Europe a majority of basins are transboundary ones!



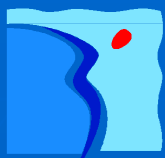
International
Network
Of Basin
Organizations

International River Basins of

EUROPE



© Copyright Transboundary Freshwater Dispute Database, 2000

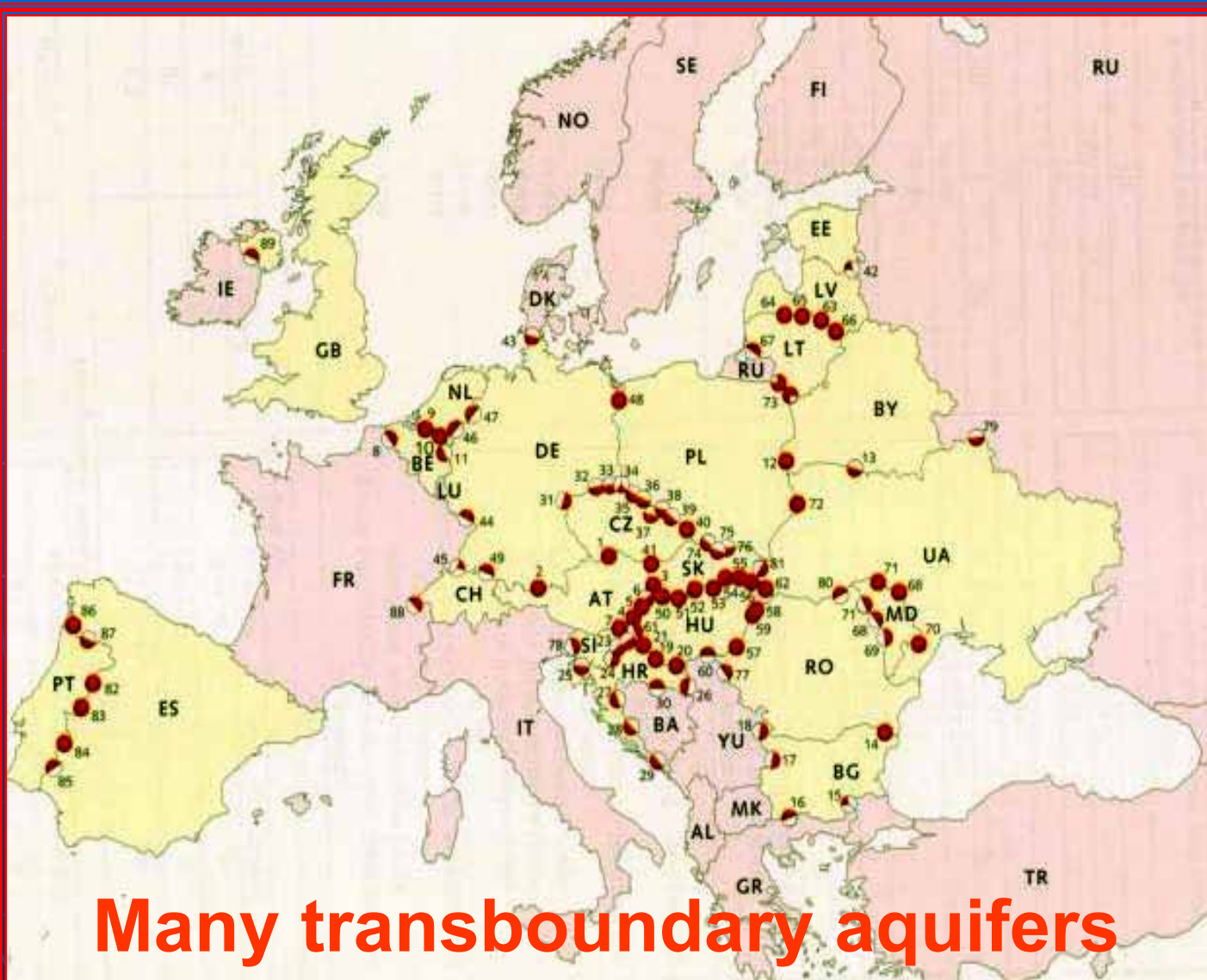


International
Office
For Water
PARIS-FRANCE

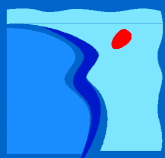
The aquifers in Europe are also concerned:



International
Network
Of Basin
Organizations



Many transboundary aquifers



International
Office
For Water
PARIS-FRANCE

IN NOTHERN AFRICA THE MAIN AQUIFERS ARE SHARED



International
Network
Of Basin
Organizations

*EX: the Algerian hydrological basin Agency
of the Sahara is mainly concerned by their management.*

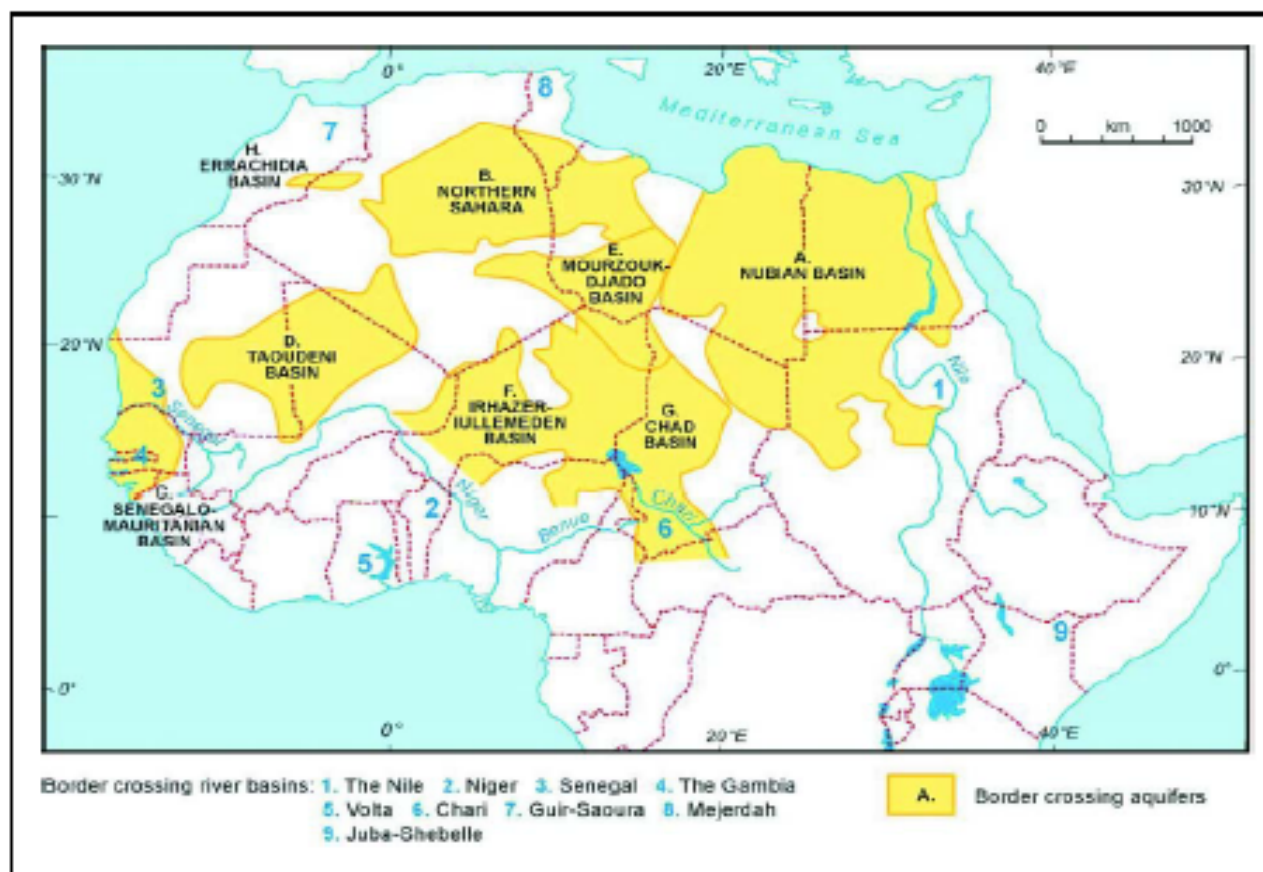


FIGURE 1. Transboundary aquifers in N Africa



**International
Office
For Water
PARIS-FRANCE**



**International
Network
Of Basin
Organizations**



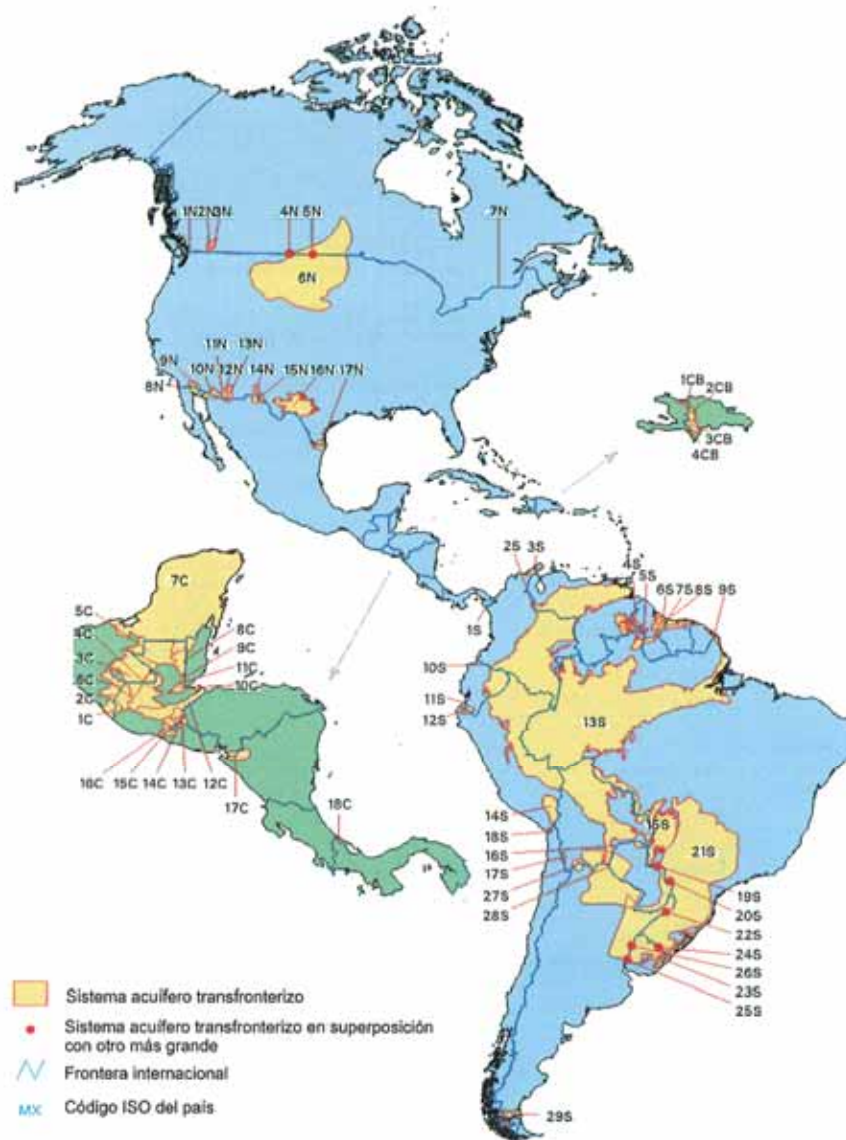


**International
Office
For Water
PARIS-FRANCE**



**International
Network
Of Basin
Organizations**

Sistemas Acuíferos Transfronterizos de las Américas



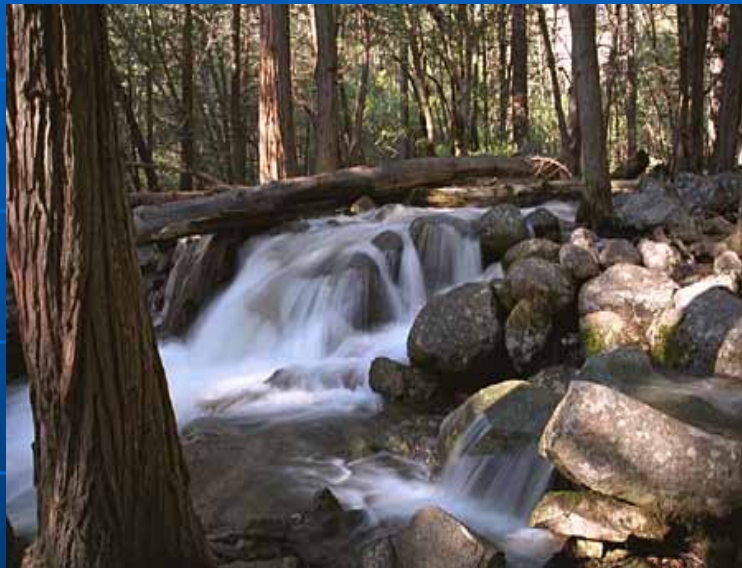


International
Office
For Water
PARIS-FRANCE

All kinds of water Are taken into consideration



International
Network
Of Basin
Organizations



- * surface waters
- * groundwater

- * transitional water
- * coastal waters...





International
Office
For Water
PARIS-FRANCE

IWRM



International
Network
Of Basin
Organizations

NOT ONLY WATER ALLOCATION BETWEEN SECTORS,

INTEGRATED WATER RESOURCE MANAGEMENT

- **OVERALL MEETING
OF RATIONAL AND LEGITIMATE DEMANDS**

- Agriculture
- Domestic uses
- Industry
- Fish farming
- Electricity
- Transports
- Leisure
- Fishing

- **WASTEWATER TREATMENT AND RECYCLING,**

- **CONSERVATION OF ECOSYSTEMS:**

rivers, lakes, wetlands, aquifers, costal areas,

- **RISK PREVENTION :**

- Erosion
- Drought
- Floods



International
Office
For Water
PARIS-FRANCE



International
Network
Of Basin
Organizations

IWRM CONCERNS

ALL MAJOR WATER USES

hydropower

Industrial uses

- abstraction
- discharges

Agricultural uses

- abstraction
- diffuse discharges

■ Conservation
of ecosystems:

- rivers, lakes,
wetlands,
aquifers, costal
areas,

TO BETTER WATER ALLOCATION BETWEEN SECTORS,

Urban uses:

- drinking water
supply
- wastewater
treatment

Recreational / ecological uses

- angling
- bathing...

Source: Ministry of the environment,
Québec, Canada



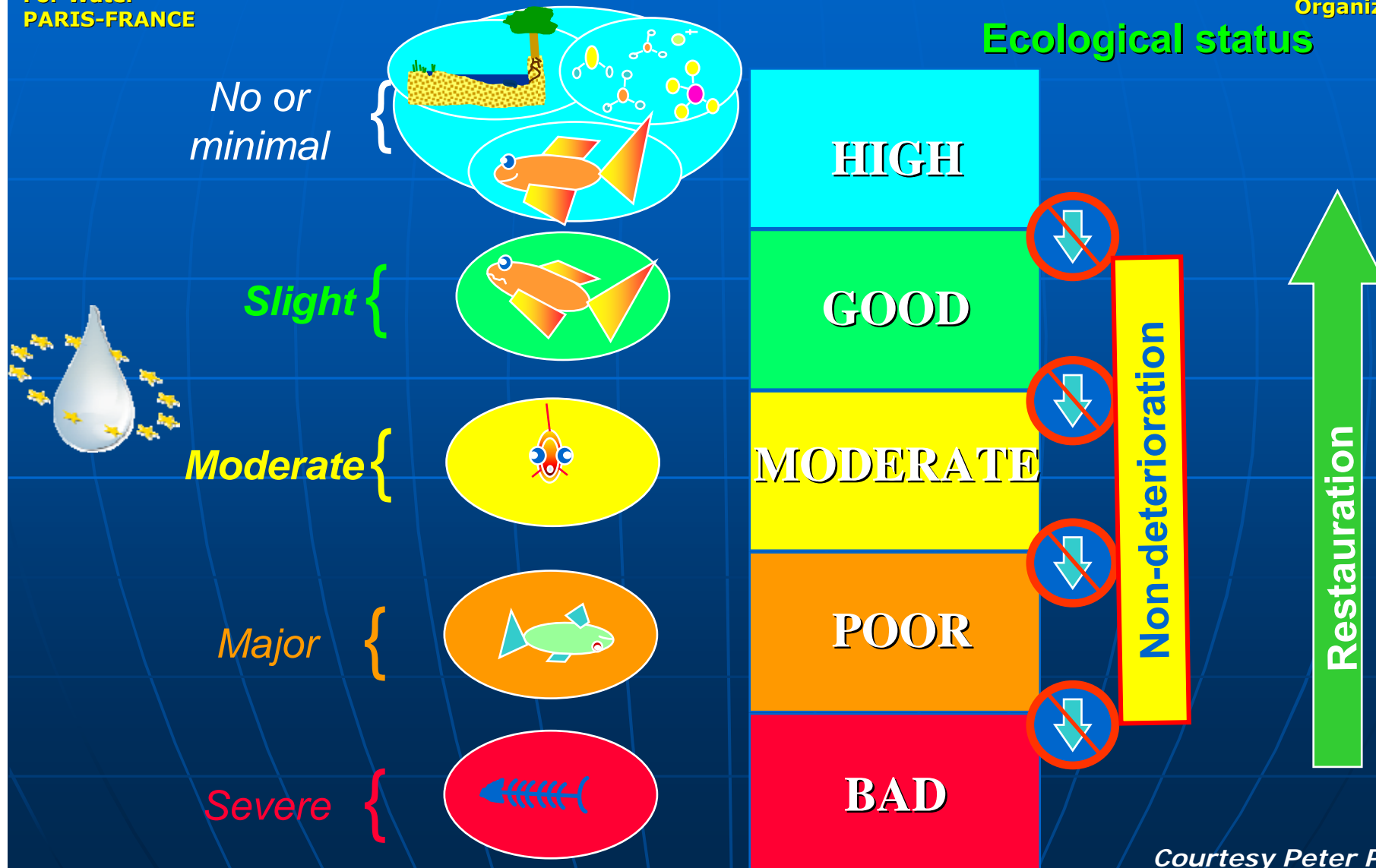
International
Office
For Water
PARIS-FRANCE



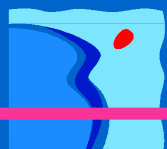
International
Network
Of Basin
Organizations

Ecological objectives

Ecological status



Courtesy Peter Pollard



International
Office
For Water
PARIS-FRANCE

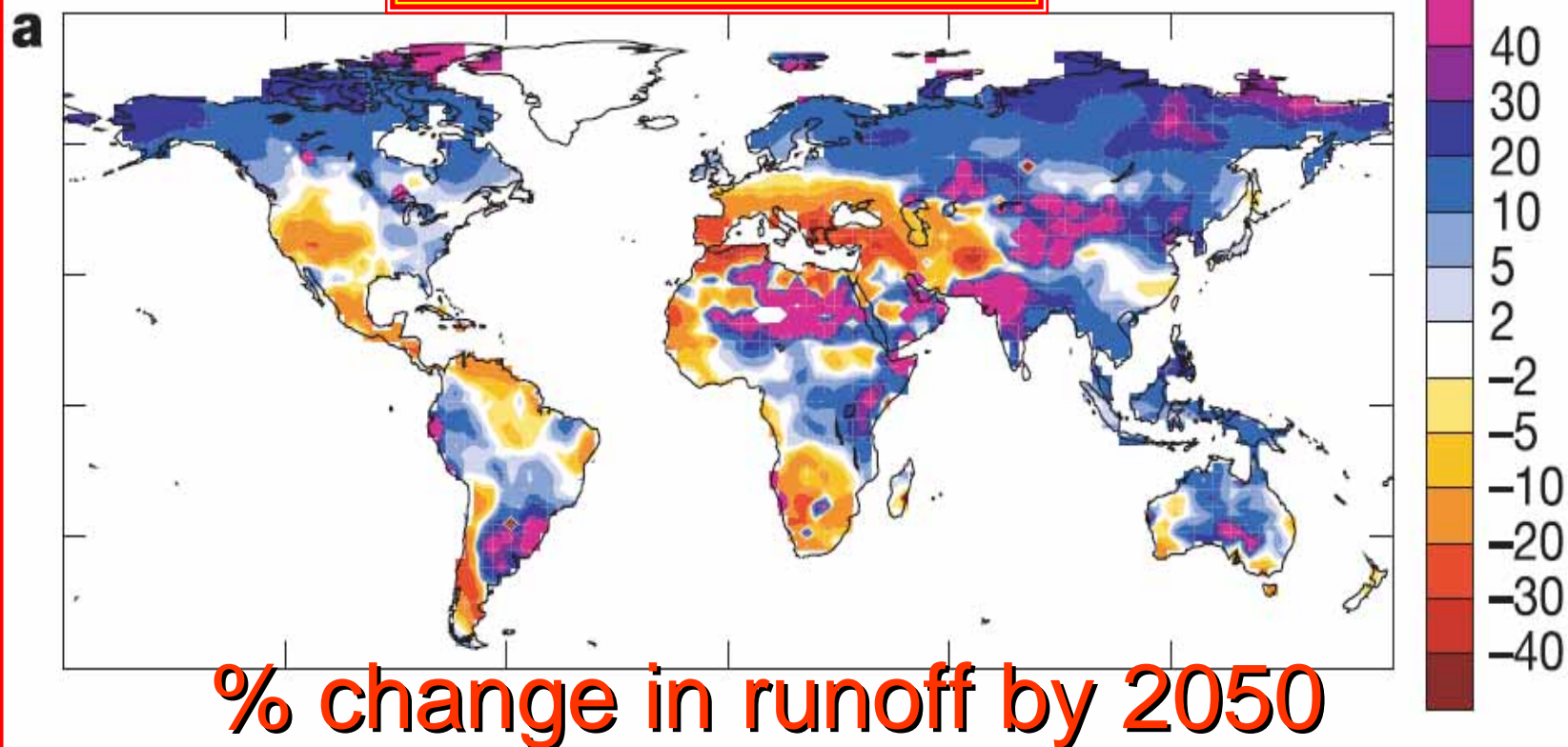
Global warming cannot now be avoided.

Fresh water resources
will be directly affected in the coming years!



International
Network
Of Basin
Organizations

water availability



- Many of the major “food-bowls” of the world are projected to become significantly drier
- Globally there will be more precipitation
- Higher temperatures will tend to reduce run off
- A few important areas drier (Mediterranean, southern South America, northern Brazil, west and south Africa)



**International
Office
For Water
PARIS-FRANCE**



**International
Network
Of Basin
Organizations**

INTEGRATED FLOOD CONTROL: FORECAST, PREVENTION, PROTECTION

- **Foreseeing hazardous events,**
- **Reducing vulnerabilities,**
- **Protecting people and properties,**
- **Warning and educating.**



International
Office
For Water
PARIS-FRANCE

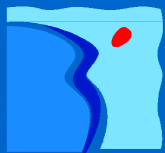
WITH REGARD TO DROUGHTS:



International
Network
Of Basin
Organizations

- **WATER SAVING,**
- **AVOIDING WASTAGES,**
- **LEAK DETECTION,**
- **RECYCLING,**
- **THE REUSE OF TREATED WASTE WATER,**
- **GROUNDWATER RECHARGE,**
- **THE DESALINATION OF SEA WATER,**
- **RESEARCH ON LOW-CONSUMPTION USES...**

... MUST BECOME PRIORITIES.



International
Office
For Water
PARIS-FRANCE

DEFINING ROLES AND RESPONSIBILITIES OF EACH:



International
Network
Of Basin
Organizations

- **A clear legal framework** must specify, in each country, the rights and obligations, the possible levels of decentralization, the institutional responsibilities of the different stakeholders, the processes and means needed for good water governance,

- International agreements
- Legislation - Regulations
- Standardization
- Authorizations for abstraction or discharge
- Water policing
- Monitoring
- Follow-up of the environment and uses
- Warning and protection
- Planning
- Funding - Programming
- Investments
- Operation - Maintenance
- Research
- Training
- Information



International
Office
For Water
PARIS-FRANCE

INTEGRATED WATER RESOURCE MANAGEMENT :



International
Network
Of Basin
Organizations

DEFINING ROLES AND RESPONSIBILITIES OF EACH:

Multilateral organizations

International commissions

Central or federal government

Local authorities = states (Federation)
 = municipalities
 = villages

Large public regional planners

basin organizations?

Water users : = community
 = individuals

Civil Society : = enterprises
 = researchers
 = NGOs



International
Office
For Water
PARIS-FRANCE

GENERAL ASSEMBLY

The Martinique, 24 – 28 January 2004

« DECLARATION OF TROIS-ILETS »



International
Network
Of Basin
Organizations

- As regards large transboundary rivers, lakes or aquifers cooperation agreements should be signed by riparian countries and management plans designed at the level of all the basins, especially in International or transboundary Commissions, Authorities or Organizations.



International
Network
Of Basin
Organizations

International
Office
For Water
Partnership

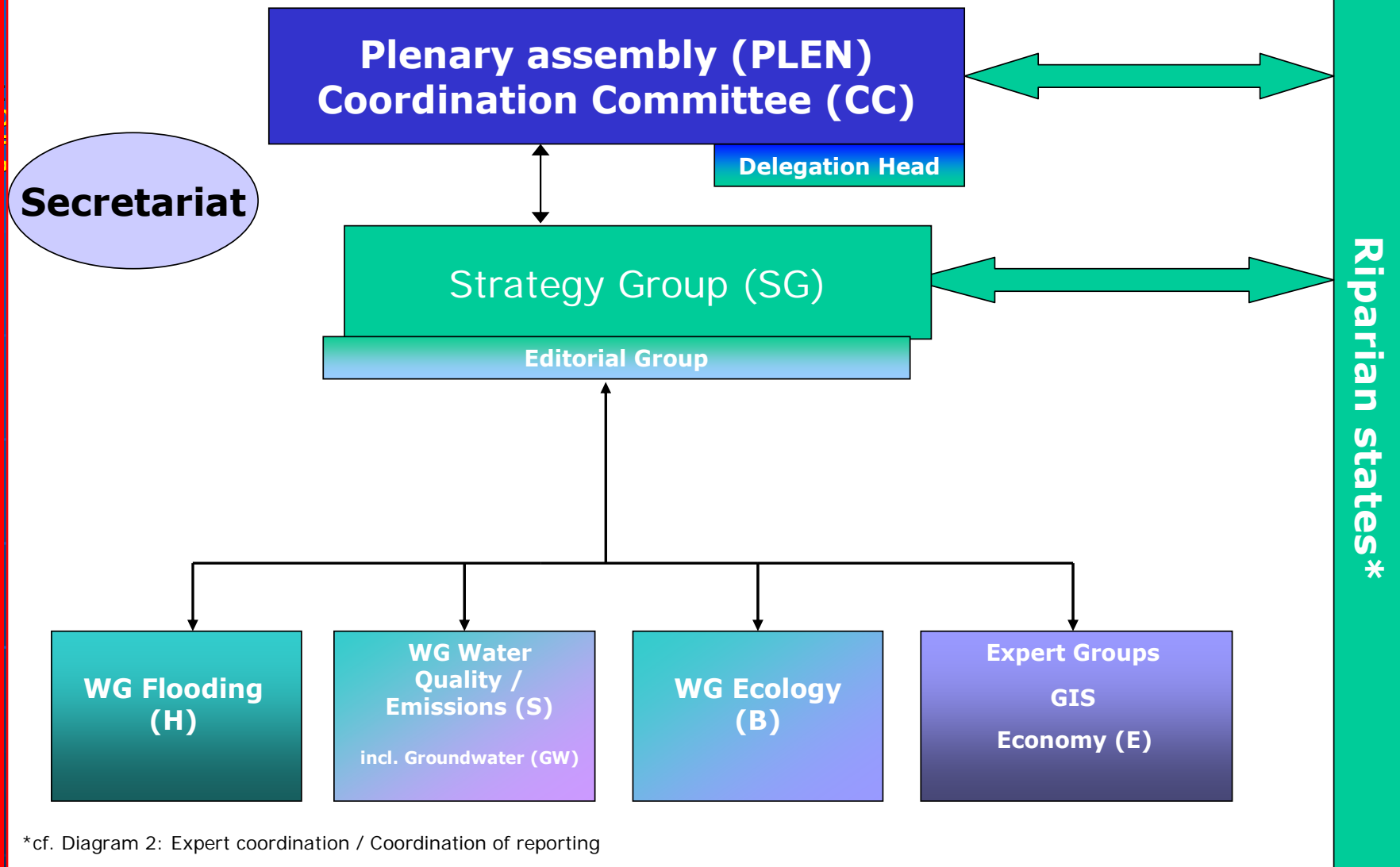
185 000 km²
50 millions inhabitants

The Rhine : an international river basin district (WFD, art 3.3)

9 States involved

Austria
Belgium
France
Germany
Italy
Liechtenstein
Luxembourg
Switzerland
The Netherlands





*cf. Diagram 2: Expert coordination / Coordination of reporting

RHINE



International
Office
For Water
PARIS-FRANCE

BASIN ORGANIZATIONS AND IWRM



International
Network
Of Basin
Organizations

According to the needs, local situations and history,

- Various formulas were adopted to organize some of the functions useful for water management,
- at the level of the basins, there is a great diversity in the mandates and selected options.
- One can mention:



International
Office
For Water
PARIS-FRANCE

DIFFERENT TYPES OF BASIN ORGANIZATIONS:



International
Network
Of Basin
Organizations

- **Administrative Commissions, with or without permanent secretariat,** in which mainly participate representatives of the « ministries » concerned to coordinate their various projects on the same river or aquifer, to exchange information or data, formalized or not, on emergency situations in particular, to define common rules (navigation, etc.), and whenever necessary, to allocate the available resources between the categories of uses, the countries or regions, especially in periods of crisis or when regulation structures do exist, etc.,
- **Arbitration « Authorities »,** to which the interested « parties » refer for decision-making on the conflicts which arise; this is the case of the **Joint International Commission** (IJC) between the USA and Canada, for example.



International
Office
For Water
PARIS-FRANCE

DIFFERENT TYPES OF BASIN ORGANIZATIONS:



International
Network
Of Basin
Organizations

- **Organizations taking charge of contracting large structuring or combined installations;**

this is the case for navigation, flood control, the building of reservoirs, especially for irrigation, hydropower production, etc.

These organizations, often created as public or private « companies » have usually the concession of community facilities for which they are responsible for their construction and long-term management, generally for providing services, raw water or by levying specific taxes.

- **« Agencies »**, which are in charge of carrying out tasks for medium-term planning and for collecting taxes on abstractions and discharges to finance or support the investments necessary for achieving the set objectives. In some cases, they can also be responsible for water policing, studies, data production or collection, etc.



International
Office
For Water
PARIS-FRANCE

DIFFERENT TYPES OF BASIN ORGANIZATIONS:



International
Network
Of Basin
Organizations

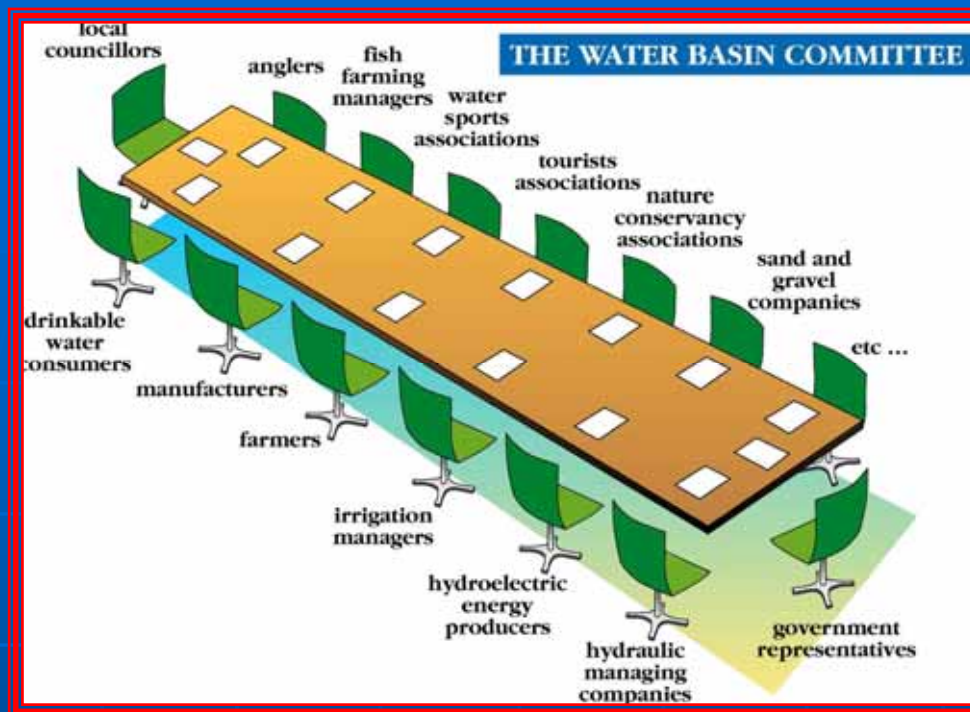
- **« Basin Committees or Councils »**, which gather, at the side of administrations, representatives of local authorities, economic sectors using water, the civil society, etc. They can be advisory or decisional, especially regarding planning, the definition of taxes, the allocation of available resources, etc.
- **« Associations, unions or consortiums »**, of local authorities, users or NGOs, which are often spontaneously organized to solve a common problem or to have some influence in water management.
- **« Projects »**, which are usually temporary for specifically implementing and action plan with specific financing.



International
Office
For Water
PARIS-FRANCE



International
Network
Of Basin
Organizations



- The representatives of populations and local authorities, water users or organizations representing collective interest should participate in this management beside administrations, especially, **in Basin Councils or Committees.**
- Information, awareness and education of populations or users and of their representatives are essential,



International
Network
Of Basin
Organizations

Conflicts

requirements collected
from each point of view



Designing a program
through **dialogue**



Reaching **agreement**
with an ambitious program





International
Office
For Water
PARIS-FRANCE

Integrated information and monitoring systems



International

The National Water Commission

- Allows consistency at national level,
- Defines policy directives,
- Deals with inter-basin strategies and national security.

The Basin Organizations

- Prepare the basin plan,
- Manage the national waters in the basin,
- Coordinate integrated management,
- Harmonize specific actions,
- Facilitate and assist in the involvement of the society through the Basin Council Assembly.

- Integrated information and monitoring systems which are reliable, representative, harmonized and easily accessible, and specific research should be organized in each basin,



International
Office
For Water
PARIS-FRANCE

GENERAL ASSEMBLY

The Martinique, 24 – 28 January 2004

« DECLARATION OF TROIS-ILETS »



International
Network
Of Basin
Organizations

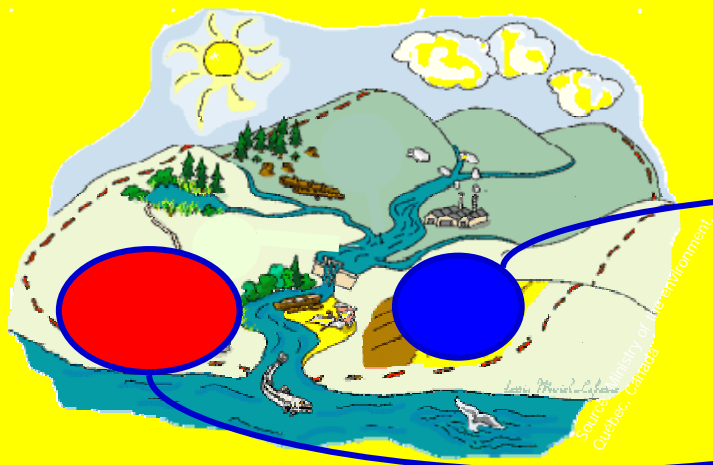
- The establishment of specific financing systems, based on the consumers and polluters' contribution and common cause, is required in each basin to ensure the implementation of successive priority action plans and guarantee the smooth operation of the necessary community utilities.
- These contributions, defined by consensus in Basin Committees, should be mainly managed at the basin level, in a decentralized manner, by a specialized, technical and financial basin organization.



Permanent
Technical
Secretariat
PARIS-FRANCE

2004

Description of the initial situation



Focus on economic aspects:

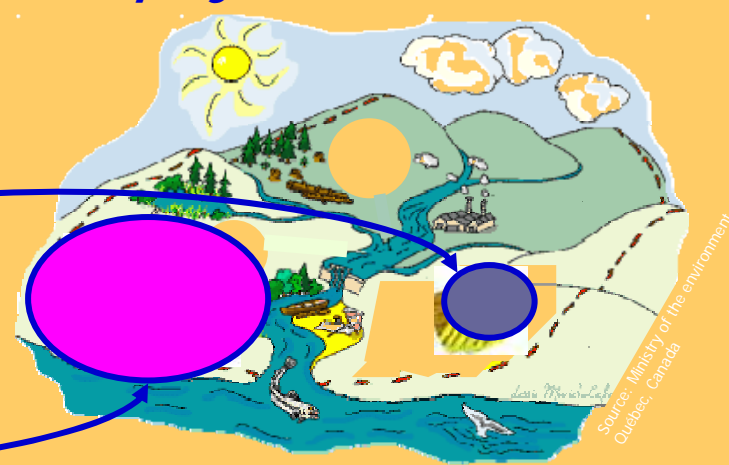
- estimate the economic "weight" of water uses and services
- assess the level of recovery of costs of water services



International
Network
Of Basin
Organizations

2015

Baseline scenario: projection for 2015



Baseline scenario:

- appraisal of evolutions of uses, pressures...
- identification of potential gaps in water status with GES

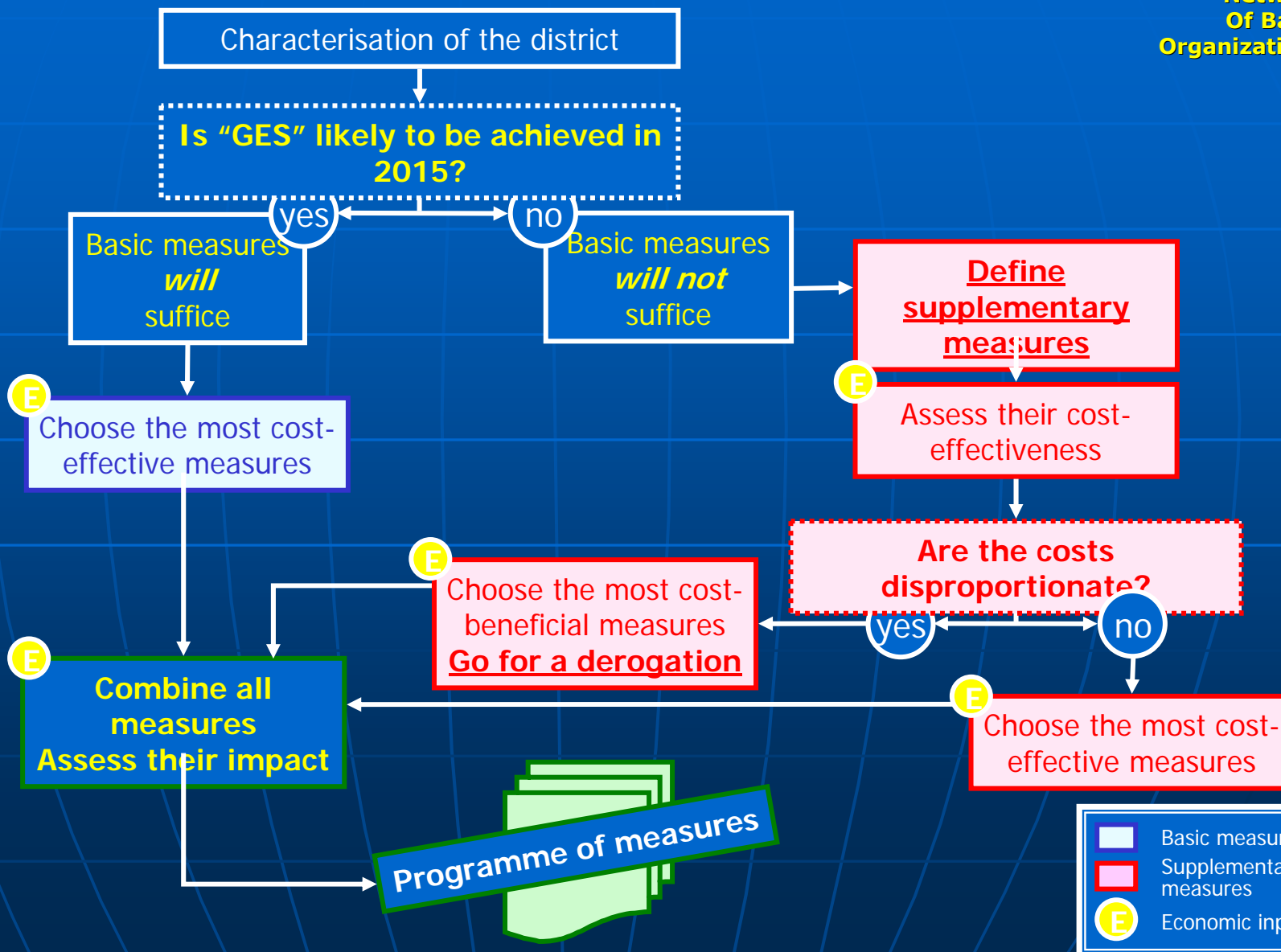


Permanent
Technical
Secretariat
PARIS-FRANCE

FLOW CHART OF THE CONSTRUCTION OF THE PROGRAMME OF MEASURES



International
Network
Of Basin
Organizations





Permanent
Technical
Secretariat
PARIS-FRANCE

TRANSPARENCY OF COSTS AND POLLUTER-PAYS PRINCIPLE:



International
Network
Of Basin
Organizations

Costs	Definition	Example
Direct cost	Capital costs	<i>Principal and interest, depreciation</i>
	Operating costs	<i>Wages, electricity, maintenance of equipment, analyses of the quality of water...</i>
Environmental cost	Costs of the damages to the environment caused by a given activity	<i>Contamination of an aquifer, destruction of wetlands...</i>
Resource cost	Value of the alternative foregone by choosing a particular activity (= opportunity costs)	<i>Cost of electricity that could have been produced if water would be available instead of being pumped for irrigation</i>

Sum = full cost



International
Office
For Water
PARIS-FRANCE



International
Network
Of Basin
Organizations

THE « POLLUTER - USER – PAYS » PRINCIPLE

**Abstraction
taxes**

**Pollution
taxes**

**The Water Agency's Budget
adopted by the Board of Directors
with approval of the Basin Committee**

10 % ↓

Studies & Research

Operation

Measurement networks

↓ 90 %

Aid = 5-year Program

Big developers

Local authorities

Farmers

Industrialists



International
Office
For Water
PARIS-FRANCE



International
Network
Of Basin
Organizations

23 October 2000



The European Framework Directive:
the future of water resource management
In the European Union.



International
Office
For Water
PARIS-FRANCE

The European Water Framework Directive



International
Network
Of Basin
Organizations

VERY AMBITIOUS CHALLENGES:

- PREVENTING THE DETERIORATION
OF WATER RESOURCES,
- REDUCING THE EMISSIONS OF SUBSTANCES,
- ACHIEVING A "GOOD STATUS"
FOR WATER AND AQUATIC ENVIRONMENTS.



International
Office
For Water
PARIS-FRANCE

As everything is linked in each Water Body,
for a real implémentation of the WFD,



International
Network
Of Basin
Organizations

it's important to take into account:

- not only the problems of quality of water and the environments,
- **BUT**, all the aspects of water management and their impacts,
- **AND**, in particular, obvious interfaces with navigation, energy production, the prevention and protection against floods and droughts,



Permanent
Technical
Secretariat
PARIS-FRANCE

ASSESSING WATER QUALITY:



International
Network
of Basin
Organizations

*TODAY, THE SYSTEMS FOR ASSESSING WATER QUALITY
AND FOR FORMULATING THE OBJECTIVES TO ACHIEVE
VARY CONSIDERABLY
FROM ONE COUNTRY TO ANOTHER,
WITHIN THE EUROPEAN UNION.*

*

THE DIRECTIVE REQUIRES:

- **THE IDENTIFICATION OF "WATER BODIES",**
As the scale of evaluation of the achievement of the objectives,
- **THE DEFINITION OF COMMON FRAMES OF REFERENCES.**

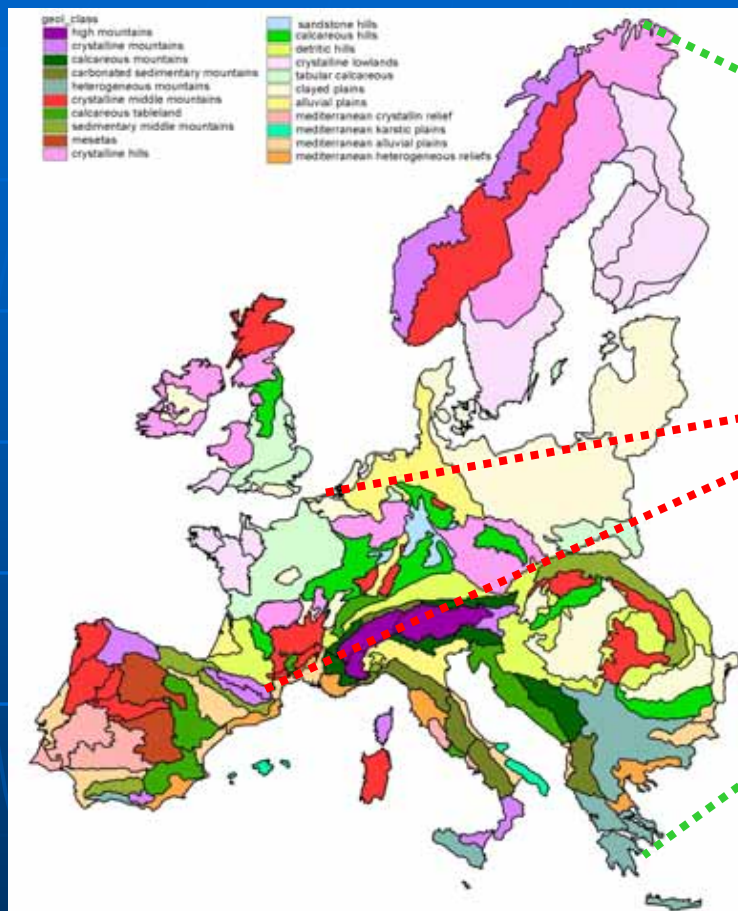


Integrated information and monitoring systems



International
Office
For Water
PARIS-FRANCE

International
Network
Of Basin
Organizations



- Integrated information and monitoring systems which are reliable, representative, harmonized and easily accessible, and specific research should be organized in each basin,



International
Office
For Water
PARIS-FRANCE

ASSESSING WATER QUALITY:

A typology of water bodies:
European Hydro - ecoregions



International
Network
Of Basin
Organizations

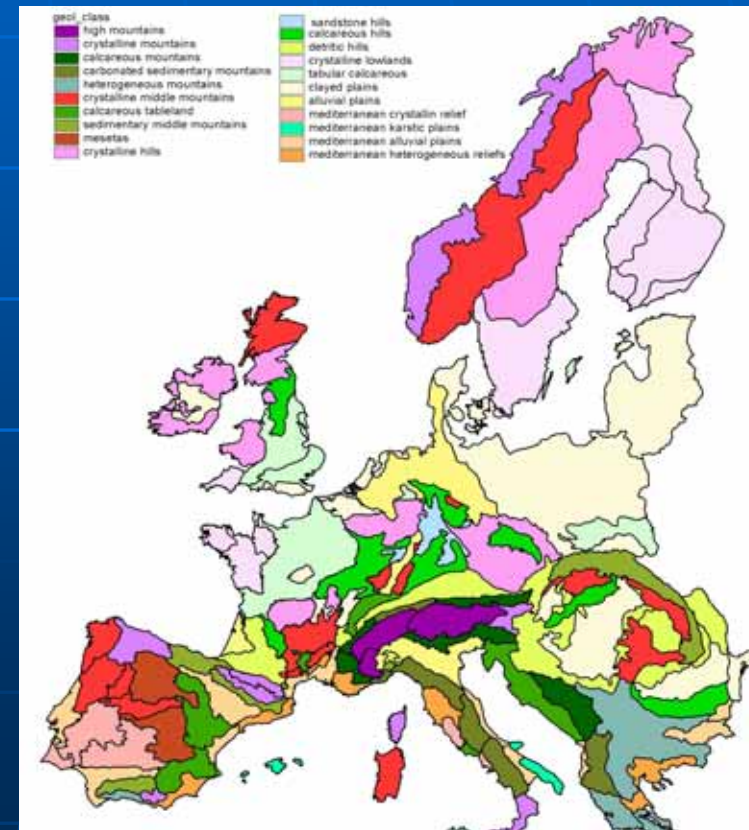
In Europe,

50,000 "WATER BODIES" have been identified:

- River WB = 27 455
- Lake WB = 10 060
- Groundwater WB = 7 719
- HMWB/AWB = 5 783

➤ **IN FRANCE :**

- River WB = 3 522
- Lake WB = 471
- Groundwater WB = 539
- HMWB/AWB = 912
- Good Status = 984
- At Risk = 941



THE DEFINITION OF COMMON FRAMES OF REFERENCES.



International
Office
For Water
PARIS-FRANCE



International
Network
Of Basin
Organizations

the European Water Framework Directive

■ **FOR EACH DISTRICT,
MUST BE FORMULATED:**

- A **"MANAGEMENT PLANS"**,
DEFINING THE OBJECTIVES TO ACHIEVE,
AND
- **"PROGRAMS OF MEASURES"**,
DEFINING THE NECESSARY ACTIONS.



International
Office
For Water
PARIS-FRANCE

The WFD introduces an obligation of results:



International
Network
Of Basin
Organizations

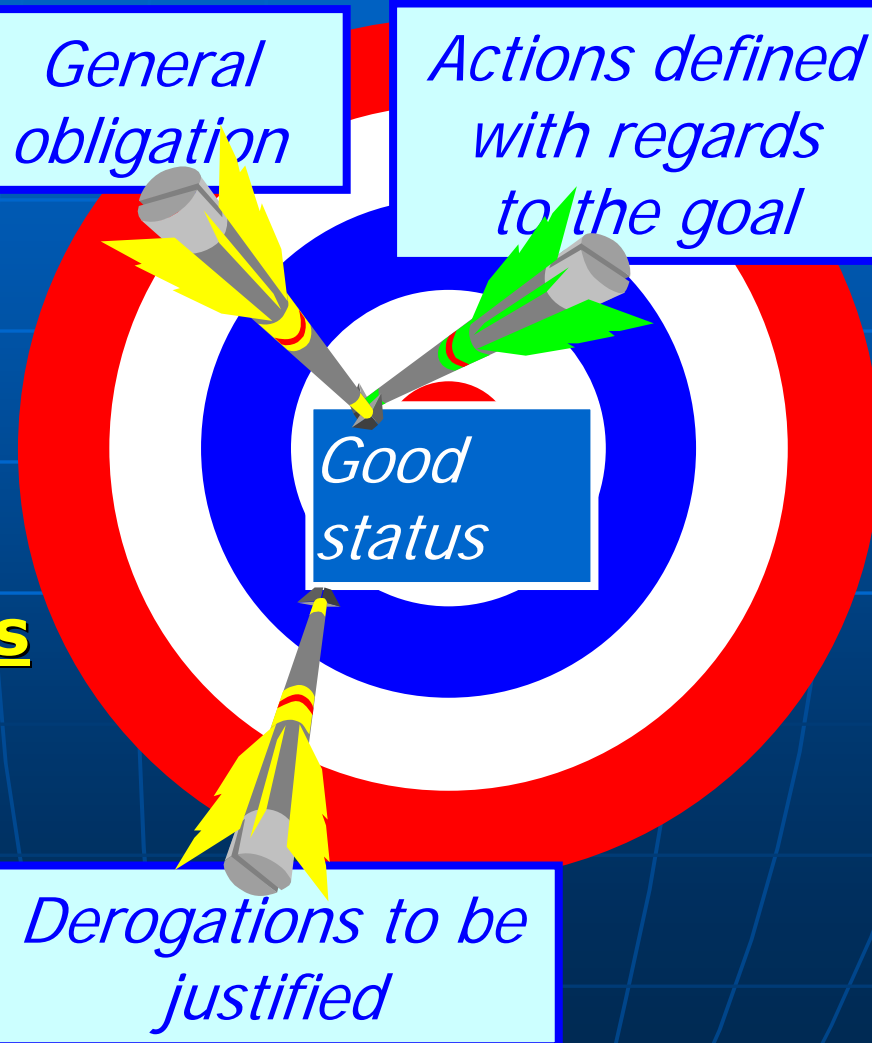
**Achieving
a "good status"
for surface
and ground waters
before 2015**

*General
obligation*

*Actions defined
with regards
to the goal*

*Good
status*

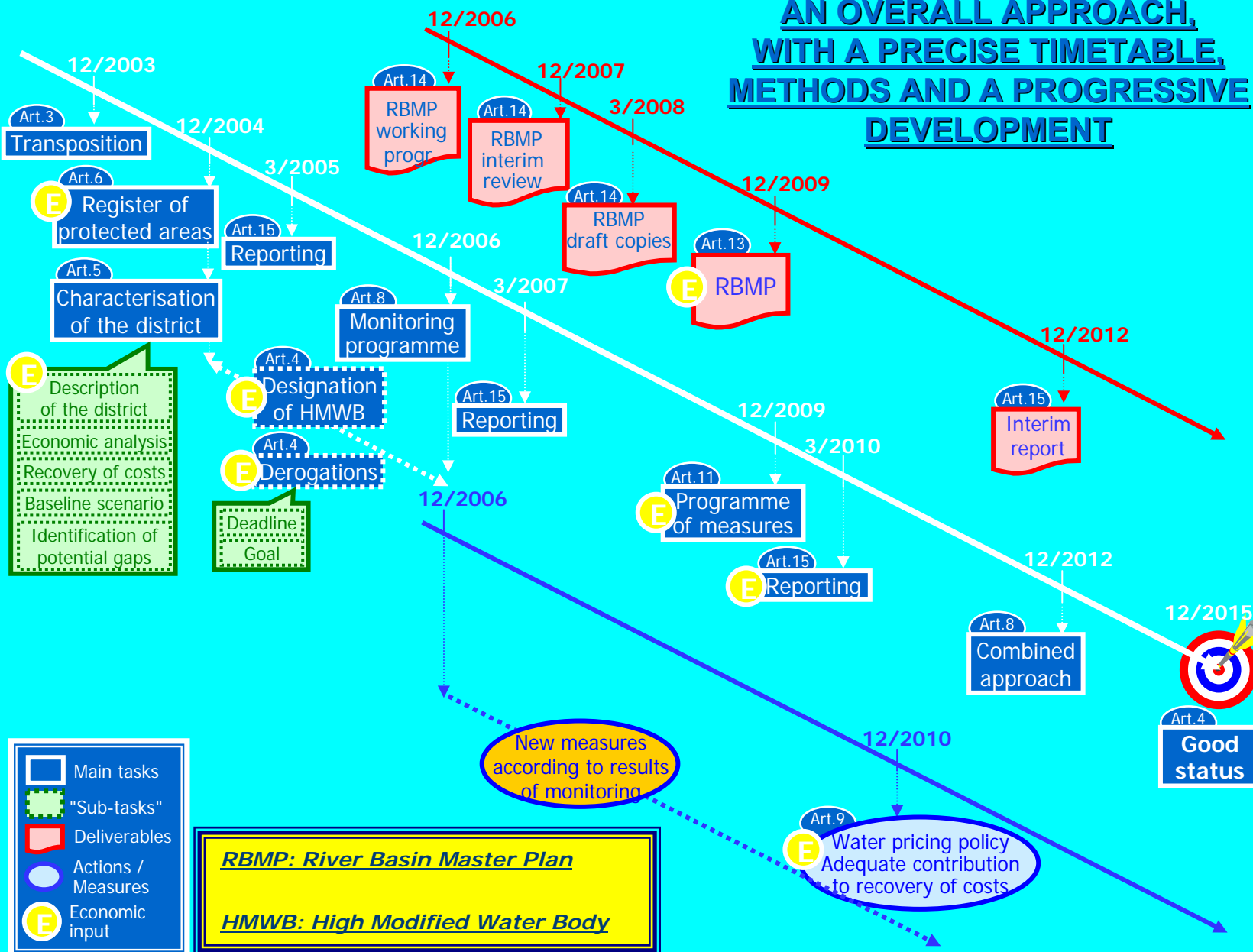
*Derogations to be
justified*





Permanent
Technical
Secretariat
PARIS

International
Network
of Basin
Organizations



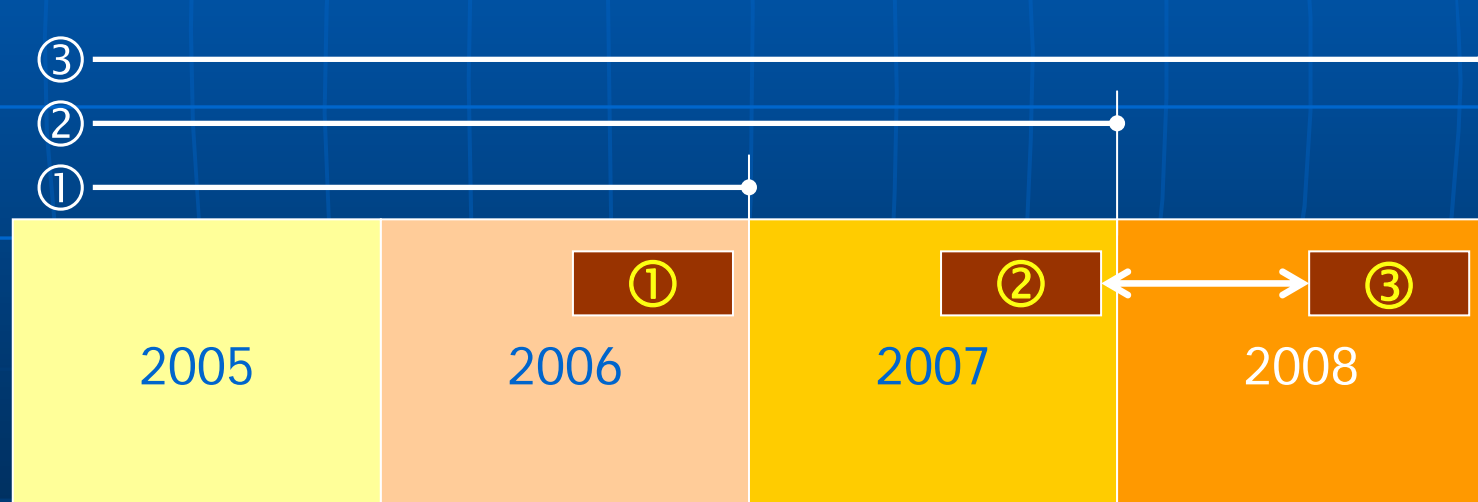


International
Office
For Water
PARIS-FRANCE

Obligations of the directive

Member States have to consult the public on :

- ① the timetable and work programme,
- ② an overview of the significant water issues identified in each river basin
- ③ draft of the river basin management plan





Permanent
Technical
Secretariat
PARIS-FRANCE

→ OUR MAIN CHALLENGE: integration of new Member – States 12 now, 14 or more in the next future?



International
Network
of Basin
Organizations



In Europe, for the first time in the world,
27 countries adopted
The same water management approach!

French Ministry of Ecology + OIEau/ IOWater + French Water Agencies 17 PHARE TWINNING CONTRACTS IN CEE

Inter
Office
For Wa
PARIS-



ational
Network
Of Basin
nizations





International
Office
For Water
PARIS-FRANCE

Implementation of the WFD in Poland: Six main topics.



International
Network
Of Basin
Organizations

**B1: Economic
issues in planning
process**

**B2:
Methodological
planning issues**

**B3: Technical
issues**

**E: Improvement of
the international
co-operation
between cross-
border water
boards**

**D: process of
public
participation
in elaboration
of river basin
management
plans**

**650 Working
days in Poland**

171 Missions

52 Experts

**C: principle of
costs recovery of
water services
into water pricing
policies**



International
Office
For Water
PARIS-FRANCE

INBO ACTION PLAN



International
Network
Of Basin
Organizations

The "Twin Basins project",
supported by the European Union:

At the moment 37 twinning have been signed.

Output 1:

Promoting Twinning between Basins
Organizations for Developing Integrated Water
Resources Management best Practices

- **Direct experiences sharing**
- **Exchange of decision-makers and technicians....**





**International
Office
For Water
PARIS-FRANCE**



**International
Network
Of Basin
Organizations**

- ✓ **5 calls from 2005 to 2007**
- ✓ **43 supported Twinnings**
- ✓ **150 missions**
- ✓ **70 Basin Organisations in 42 countries**

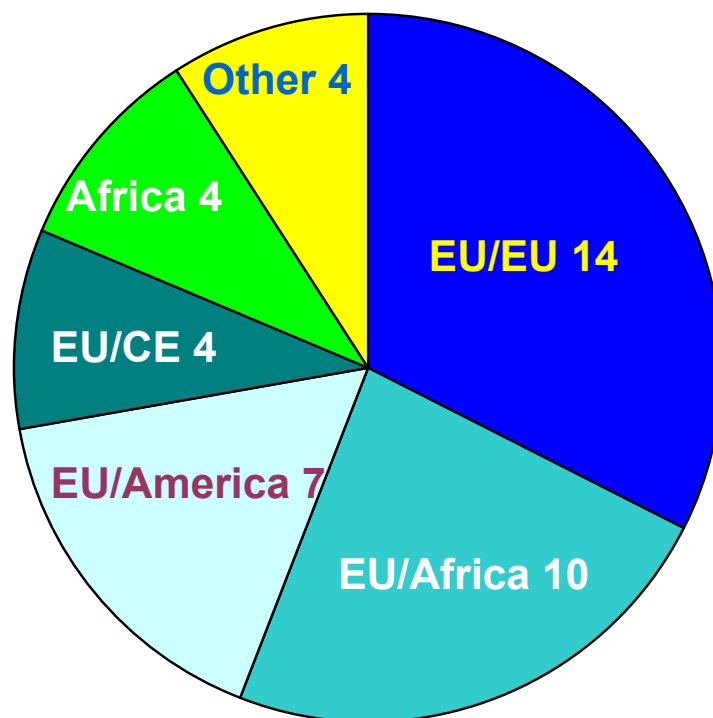


International
Office
For Water
PARIS-FRANCE

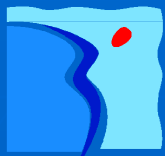


International
Network
Of Basin
Organizations

The twinnings are ...



- EU-EU
- EU-Africa
- EU-America
- EU-Central Europe
- Africa-Africa
- Other



International
Office
For Water
PARIS-FRANCE

✓43 supported Twinnings



International
Network
Of Basin
Organizations





International
Office
For Water
PARIS-FRANCE



International
Network
Of Basin
Organizations

ACHIEVEMENTS

Thematic Twinning 1/2

- **WFD implementation**
- **Institutional aspects**
- **Hydrobiology & hydrology**
- **Information system**
- **Participation: civil society, stakeholders**



International
Office
For Water
PARIS-FRANCE



International
Network
Of Basin
Organizations

ACHIEVEMENTS

Thematic Twinning 2/2

- Master plan
- Monitoring networks, quality or quantity
- Economical aspects: pricing, cost recovering
- Coastal waters' management
- Basin valorisation by tourism



**International
Office
For Water
PARIS-FRANCE**

A TWINNING AGREEMENT SHOULD BE REALISTIC:



**International
Network
Of Basin
Organizations**

- ❑ **Restricted to some very specific topics for effective cooperation ... and not aiming at the whole of IWRM in a theoretical manner !**
- ❑ **Targeting the medium term (3 or 5 years) ... there will not be any immediate results**
- ❑ **Defining an achievable program ... therefore useful actions in limited number**
- ❑ **Securing the human and financial means required.**



International
Office
For Water
PARIS-FRANCE



International
Network
Of Basin
Organizations

... About Twinning?

- **Similitude between twin BOs is preferable:**
same major characteristics, same climate,
or same problems (e.g. coastal management
in Crete Island and Bulgaria, Congo/Niger)



International
Office
For Water
PARIS-FRANCE



International
Network
Of Basin
Organizations

... About Twinning

- **Exchanges of Staff is often the most profitable (Heads stay home)**

- **Add value of “multi twinning”**
 - **Romania-Spain + Romania-France**
 - **Bulgaria-France + Bulgaria-Greece**
 - **Sweden- Nicaragua – Peru – Uruguay**



International
Office
For Water
PARIS-FRANCE



International
Network
Of Basin
Organizations

... About Twinning?

- **Success of TW depends on quality of preparation before missions:**
 - clear agenda and objectives,
 - targeted topics,
 - ...according to the status of the basin and BO
- **Involvement of high level from the beginning to ensure decision-makings afterwards**



International
Office
For Water
PARIS-FRANCE



International
Network
Of Basin
Organizations

... About Twinning?

- **Communication : key aspect for success**
 - Dissemination/information flow after mission: workshops/meetings, notes, etc...
in RBO among various departments
 - **Communication between missions among Twinners**
 - Use of existing networks : e.g. ANBO, MENBO, CEENBO



Office
For Water
PARIS-FRANCE

...About Content?

Network
Of Basin
Organizations

□ Concrete results:

- **Setting up hand book for cost recovering in Morocco**
- **Elaboration of documents for monitoring withdrawals (regulation on declaration, model of bill, communication plan in Algeria)**
- **Elaboration of flood management plan in Nigeria with support of Ghana ...**



International
Office
For Water
PARIS-FRANCE



International
Network
Of Basin
Organizations

THE SIGNING OF A TWINNING AGREEMENT IS NOT AN END IN ITSELF

?



International
Office
For Water
PARIS-FRANCE



International
Network
Of Basin
Organizations

TWINNING ARRANGEMENTS SHOULD NOT LEAD TO TECHNICAL AND ADMINISTRATIVE TOURISM





International
Office
For Water
PARIS-FRANCE

THE TWINNED BASIN ORGANIZATIONS SHOULD HAVE:



International
Network
Of Basin
Organizations

- ☐ **Their own legal existence (legal status)**

and not be “projects” or “services”

- ☐ **Means**

 - Human:**

 - ↗ technical and administrative staff

 - ↗ political decision-makers

 - ↗ socioeconomic representatives

 - Financial:**

 - ↓ travels

 - ↓ welcoming/visits

 - ↓ experts' assignments

- ☐ **A true will of working together !**



International
Office
For Water
PARIS-FRANCE



International
Network
Of Basin
Organizations

On these conditions,

TWINNING ARRANGEMENTS

ARE USEFUL AND EFFICIENT MEANS

TO SUPPORT

THE DEVELOPMENT

OF BASIN ORGANIZAITONS



International
Office
For Water
PARIS-FRANCE

INBO ACTION PLAN



International
Network
Of Basin
Organizations

□ Output 2:

➤ Capacities mobilisation from Basin Organizations:

- Assistance with the implementation of institutional reforms,
- Initiation of basin pilot projects,
- Support to countries sharing a transboundary basin,
- Assisting with the setting-up of new basin organizations,
- Professional training of technical teams,



International
Office
For Water
PARIS-FRANCE

INBO ACTION PLAN



International
Network
Of Basin
Organizations

□ Output 2:

➤ **Capacities mobilisation from Basin Organizations**

- Design of monitoring networks and databases,
- Assessment to planning process,
- Establishment of institutional mechanisms for users' participation in decision-making,
- Financial and economical studies,
- Assisting with the setting-up of new water taxes...

PHARE PROJECT

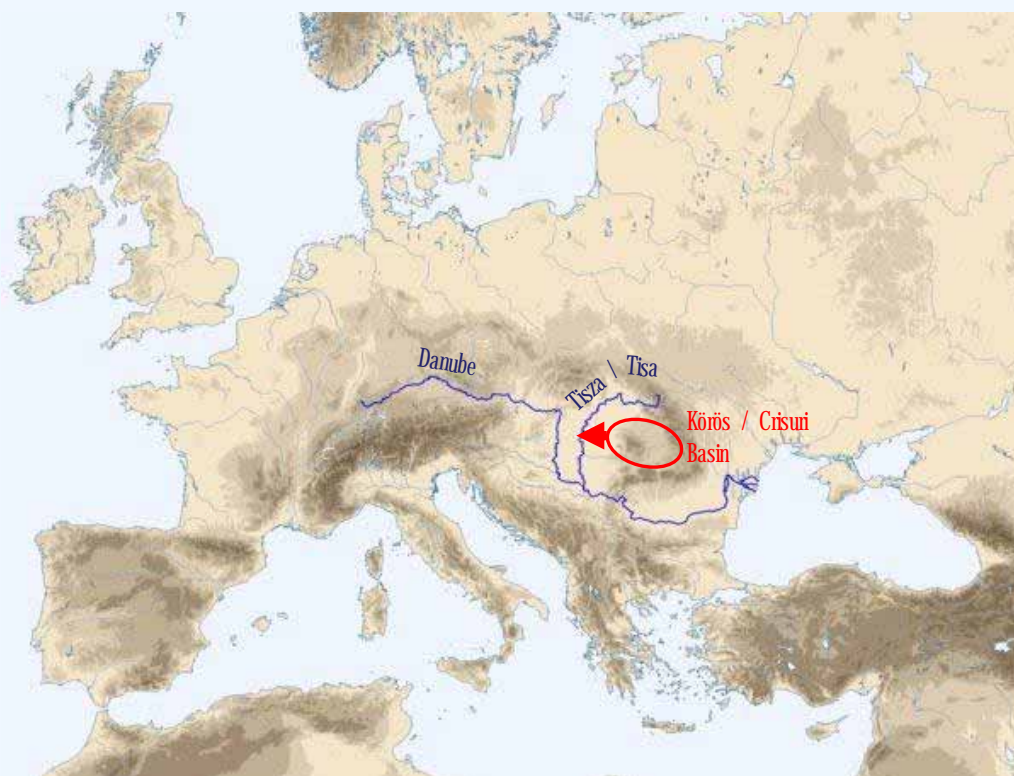
"Pilot Project for the creation of a basin Information System in Poland"

- **Sponsoring: EU/ French Ministry for Foreign Affairs,
Polish Ministry for Enviromental Protection**
- **Duration: 18 months,**
- **Beginning January 1996.**
- **Geographical location: RZGW of Gdansk**
- **Project priority topic:
Surface water quality / Data comparability.**

- ***Organization of the partners network,***
- ***Harmonizing and standardizing Works,***
- ***Setting-up of the Gdansk RZGW information system
on surface water quality (RZGW, 4 IMGW and 9 WIOS).***



French Global Environment Facility



Transboundary River Basin Management of the Körös/Crisuri River Project, Hungary - Romania

Pilot project including tool set-up for the shared control and management
of the river Basin

ICPDR Danube coordination

2 National WFD implementation strategy

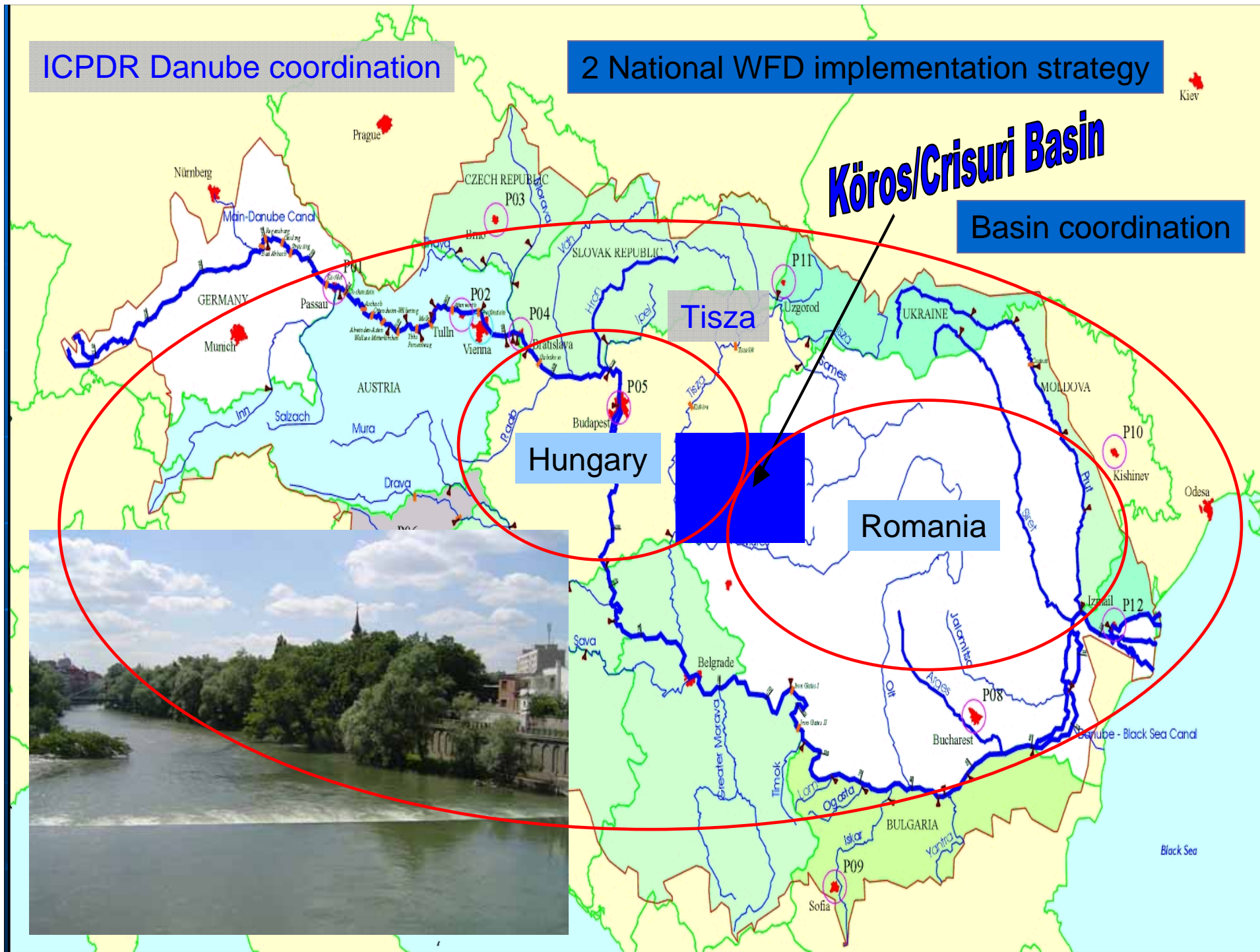
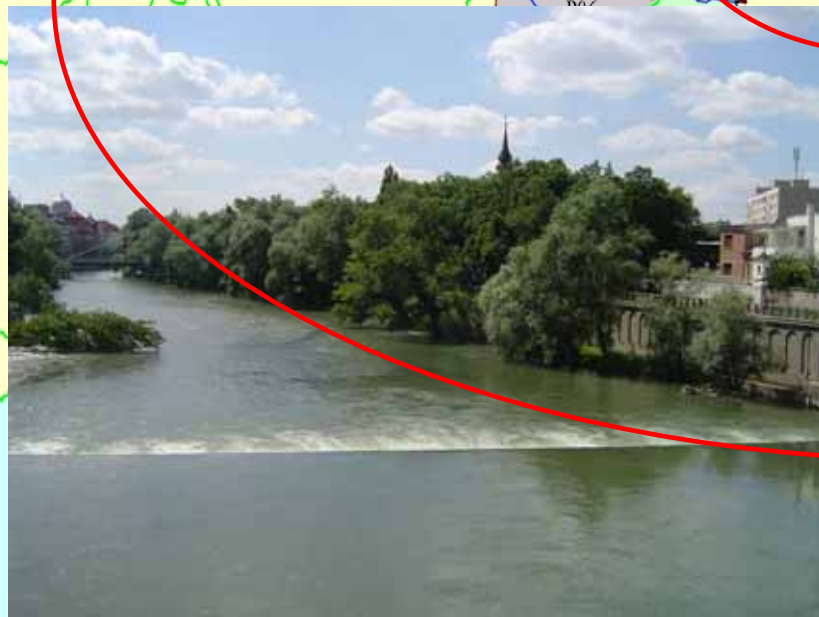
Körös/Crisuri Basin

Basin coordination

Tisza

Hungary

Romania





International
Office
For Water
PARIS-FRANCE

INBO ACTION PLAN



International
Network
Of Basin
Organizations

□ Output 3:

➤ Synthesis of knowledge and Know-How:

- To identify good practices,
- To set common, easily accessible and measurable performance indicators,
- To train staff and stakeholders from basin organizations,



**International
Office
For Water
PARIS-FRANCE**



**International
Network
Of Basin
Organizations**



Towards a European-wide exchange Network for improving dissemination of IWRM research outcomes:

- **identifying and describing the national research programs which have a relationship to IWRM in UE countries,**
- **locating the sources of information on recent and current projects,**
- **identifying and contacting the persons-in-charge of these programs**
- **organising workshops of these program managers to prepare the basis of a long-term collaboration,**
- **proposing new ways to develop a more demand-driven research, and a better dissemination of outputs.**



International
Office
For Water
PARIS-FRANCE

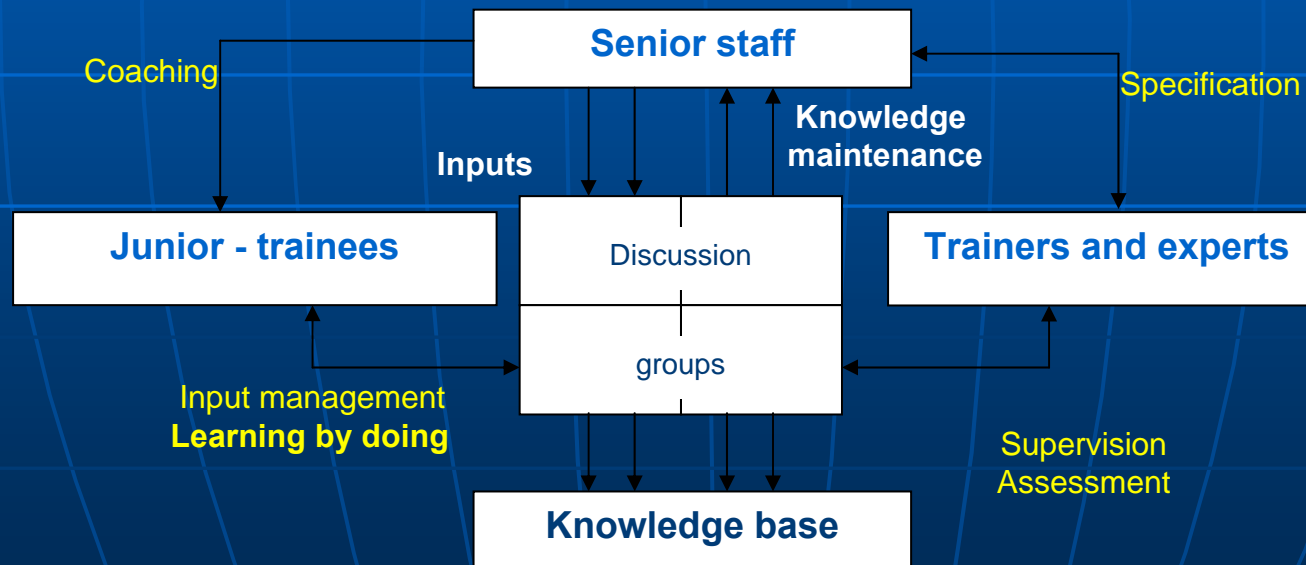


International
Network
Of Basin
Organizations

Project supported by the European Programme Leonardo Da Vinci

« WFD Community »:

a Virtual Learning computing system for Water professionnals



The basis of our future internal Virtual "University"



International
Office
For Water
PARIS-FRANCE



Framework
Directive:
good status
for waters
in the Union
before 2015

How to achieve
the environmental objectives
and ensure a consistent
implementation
in the Union
?

The European Framework Directive: Many questions indeed arise!



International
Network
Of Basin
Organizations

How to define
'good' ecological
quality
?

How to define
the 'sustainable'
functioning
of the aquatic
ecosystems
?

... And how to ensure
comparability
in the classification
of ecological status
and of monitoring
in the Union
?



International
Office
For Water
PARIS-FRANCE

« EURO – RIOB 2007 »

08 – 09 Novembre 2007 - ROME



International
Network
Of Basin
Organizations





**International
Office
For Water
PARIS-FRANCE**

INBO joins the Strategic Coordination Group of the WFD Common Implementation Strategy



**International
Network
Of Basin
Organizations**

Fourteen CIS Guidance Documents:

- 1) Economics and the Environment**
- 2) Identification of Water Bodies**
- 3) Analysis of Pressures and Impacts**
- 4) Artificial and Heavily Modified Water Bodies**
- 5) Transitional and Coastal Waters –Typology, Reference Conditions**
- 6) Intercalibration Network and the Intercalibration Process**
- 7) Monitoring**
- 8) Public Participation**
- 9) GIS and the WFD**
- 10) Rivers and Lakes Typology**
- 11) Planning Process**
- 12) Wetlands**
- 13) Classification**
- 14) Reporting**





**International
Office
For Water
PARIS-FRANCE**

CIS priorities :



**International
Network
Of Basin
Organizations**

- **Climate Change**
- **Droughts and Floods**
- **Intercalibration exercise**
- **WFD and agriculture**
- **Hydromorphology (hydropower and navigation)**
- **New Pilot River Basin exercise**
- **Reporting and WISE**
- **Priority substances / Chemical monitoring**
- **Cost effectiveness**





International
Office
For Water
PARIS-FRANCE

INBO ACTION PLAN



International
Network
Of Basin
Organizations

□ Output 4 :

➤ The networking of water Information- documentation systems

- Exchange of information and documentation,
- Assistance with the structuring of the National Relay Documentation Centers,

➤ **AQUADOC-INTER, SEMIDE or AWIS?**



International
Office
For Water
PARIS-FRANCE



International
Network
Of Basin
Organizations

**3 Projects
are on the way
on the basis of
linked LFP
at regional level**

Local
Focal
Point

Local
Focal
Point

Local
Focal
Point

Local
Focal
Point

Full compatibility for access and data sharing

EMWIS : the Euro Mediterranean Water Information System

AQUADOC : the European Water Information System

AWIS : the African Water Information System



International
Office
For Water
PARIS-FRANCE

www.riob.org – www.inbo-news.org
800.000 VISITORS / YEAR!



International
Network
Of Basin
Organizations

The screenshot displays the INBO website interface. On the left, a list of organizations is provided in their respective languages: R.I.O.B. (Réseau International des Organismes de Bassin), I.N.B.O. (International Network of Basin Organizations), R.I.O.C. (Red Internacional de Organismos de Cuenca), R.I.O.B. (Rede Internacional dos Organismos de Bacia), and МСБО (Международная Сеть Бассейновых Организаций). On the right, four banners announce upcoming assemblies: Debrecen (HONGRIE) Assemblée Générale Mondiale du RIOB (June 7-9, 2007), Debrecen (HUNGARY) INBO's World General Assembly (June 7-9, 2007), Debrecen (Hungria) Asamblea General Mundial de la RIOC (June 7-9, 2007), and Debrecen (HUNGRIA) Assembleia Geral Mundial da RIOB (June 7-9, 2007). At the bottom, there is a link to 'The electronic INBO's newsletter' and a 'Get registered !' button. A footer note in French suggests contacting the Webmaster for any issues.

. in English,
. en Français,
. en Español,
. en Português,
. in Russian....

**I invite you to visit
INBO Web site!**



International
Office
For Water
PARIS-FRANCE

International Network of Basin Organisations
Réseau International des Organismes de Bassin



International
Network
Of Basin
Organizations



INBO initiatives are open
to your participation :
your inputs are welcome !

<http://www.riob.org>

<http://www.inbo-news.org>

***For developing and strengthening
basin organizations over the world***

MERCI DE VOTRE ATTENTION!
THANK YOU FOR YOUR ATTENTION!

www.inbo-news.org

www.riob.org

mail: inbo@wanadoo.fr

riob2@wanadoo.fr

流域组织国际网

Vízgyűjtő Szervezetek Nemzetközi Hálózata

Международная сеть водохозяйственных организаций,

Réseau International des Organismes de Bassin

International Network of Basin Organizations

Red Internacional de Organismos de Cuenca

الشبكة الدولية لهيئات الأحواض